

# 2014 JCB 510-56S

UNIT: JCB5CGXGV01405191

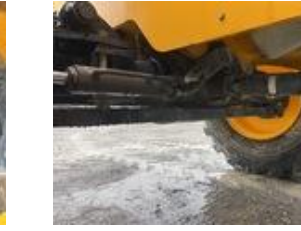
[Download Reconditioning Printout](#)



















## UNIT SPECS

Customer

Wells Fargo (IMS)

## LOCATION

Wells Fargo (IMS)

Please call Pickup Support for location information  
Lake Point, UT 84074

### CHASSIS

Boom Condition  
Rating:  
Good

Chain / Tensioners  
Rating:

Good

Rollers And Guides

Rating:

Good

Boom Wear Guides

Rating:

Good

Turntable Bearing

Rating:

Good

Outriggers

Rating:

Good

Chassis

72 in Forks, Outriggers

## **TELEHANDLER\***

Steering Linkage

Rating:

Good

Frame Condition

Rating:

Good

Limited Function Check (Telehandler\*)

The main chassis components functioned during a limited check.

Master Cylinder

Rating:

Good

Brake Control

Rating:

Good

Brake Lines/Hoses

Not operationally checked

Rating:

Good

Park Brake

Rating:

Good

Limited Function Check - Brakes

The service brakes are operational

Left Front Tire

Size: 17.5-25 Brand: Galaxy Tread Depth: 11/32

Left Rear Tire

Size: 17.5-25 Brand: Galaxy Tread Depth: 10/32

Right Rear Tire  
Size: 17.5-25 Brand: Galaxy Tread Depth: 10/32

Right Front Tire  
Size: 17.5-25 Brand: Galaxy Tread Depth: 13/32

Wheel Condition  
No visible damage or missing components

Loader Quick Coupler  
Not operationally checked  
Rating:  
Good

Load Back Rest  
Rating:  
Good

Forks  
Rating:  
Good

## **CONTROL STATION**

Seat/Armrests  
Dirty

Glass  
No visible damage or missing components

Cab Door  
No visible damage or missing components

Steering Control  
Rating:  
Good

Hydraulic Controls  
Rating:  
Good

Drivetrain Controls  
Rating:  
Good

Transmission Disconnect Control  
Rating:  
Good

Load Charts  
Chart book in cab

Engine Oil Pressure  
No oil pressure indicator

Warning Lights  
Operational, An alarm screams at you the whole time is on.

Gauges  
Operational

Rear View Camera  
Camera operates as intended

Hour Meter/Odometer (Start)  
5830.4 hrs

Hour Meter/Odometer  
5831.2 hrs

Air Conditioner  
The ambient temperature is too cold to check

Heater  
Not operationally checked

Limited Function Check (Control Station)  
The main components are in place and operational as noted.



Control Station  
Enclosed Cab, 56 ft Max Lift Height, 10000 lb Max Lift Capacity

## **DRIVETRAIN**

Transmission  
Rating:  
Good

Transfer Case / Drop Box  
Operational  
Rating:  
Good

Drive Motors  
Rating:  
Good

Front Drive Axle  
Rating:  
Good

Front Axle Oscillating Pin  
Rating:  
Good

Rear Drive Axle  
Rating:  
Good

Rear Axle Oscillating Pin  
Rating:  
Good

Final Drives  
Rating:  
Good

Limited Function Check (Drivetrain)  
The drivetrain was operational.



## ENGINE

Blow-by (Subjective Visual Observation)

No noticeable vapor or pressure



Starter

Operational

Exhaust System

No visible damage or missing components

Radiator

Rating:

Good

Oil Leaks

No dripping leaks

Fuel Leaks

No dripping leaks

Cooling System Leaks

No dripping leaks

Limited Function Check (Engine)

The engine started and ran.



Engine

Couldn't read the year. US EPA Label

## GENERAL APPEARANCE

Year

2014

Make

JCB

Model

510-56S

Serial Number / VIN

JCB5CGXGV01405191

CE Mark

No CE mark found

Pre-Operational Checks

Confirm Fluids Checked: Engine Coolant. Confirm Fluids Checked: Engine(s) Oil. Confirm Fluids Checked: Transmission Fluid. Confirm Fluids Checked: Hydraulic Fluid. Confirm Fluids Checked: Fuel Level

Paint

No visible damage

Body Panels

No visible damage or missing components

Fenders

Left front damaged, Left rear damaged

Cab/Canopy Overhead Structural Framework  
No visible damage

Steps  
No visible damage or missing components

Hand Rails  
No visible damage or missing components

Exterior Lights  
All lights operational

## **HYDRAULICS**

Pumps (Hydraulics)  
Rating:  
Good

Valves  
Rating:  
Good

Hydraulic Tank  
Rating:  
Good

Hoses (Hydraulics)  
Rating:  
Good

Auxiliary Hydraulic Plumbing  
Operational

Boom Lift Cylinder(s)  
Rating:  
Good

Telescopic Boom Cylinders  
Rating:  
Good

Carriage Tilt Cylinder  
Rating:  
Good

Frame Leveling Cylinders  
Rating:  
Good

Outrigger Cylinders  
Rating:  
Good

Steering Cylinders  
Rating:  
Good

Limited Function Check (Hydraulics)  
The hydraulic system was operational. Has an alarm going off while hydraulics are being used.



## LOGISTICS INFORMATION

### Shipping Dimensions

28 ft Long x 8 ft 1 in Wide x 8 ft 10 in Tall

### General Shipping Information

Yes: Does this Unit Run? Yes: Inflated Tires - item can roll? No: If self propelled, does the unit travel? No: Is the unit taller than 12'? No: Is the unit wider than 8'6"? No: Noticeable fluid leaks?

### Road Related Shipping Info

Yes: Lights Operate? Yes: Brakes Operate? Yes: Tires OK?

## SAFETY

Travel Alarm

Operational

Horn

Operational

Seat Belts

Operational

Safety Lock Out/Stop

Operational

Current Safety Manual

Yes

Current Operator/Maintenance Manual

No

## RECONDITIONING

Left front and rear fenders - damaged

\$4,000

**Total**

**\$4,000**