

















A yellow information panel with a bus icon and the text "Pres". Below the icon is a dashed line. At the bottom, there are two buttons: "OFF" and "TEST".

ULTRA LO



















EVERY TRUCK. EVERY TIME.™

# DIAGNOSTIC REPORT

Print Date: September 26, 2011 1:00:29

<b>VIN</b>	2PC1G3419G0C713072
<b>Vehicle Make</b>	Freight
<b>Model</b>	F43 Coach
<b>Model Year</b>	2016

## Vehicle Components

Component	Description	Serial Number	Software Version	News
Engine	W6vo D13	1C118641	23080371	J1839 (High/15782 Low/15782 CPE)
Transmission	Alison 3000400 6Sp Over	8X0960520999100	W19800_PC_S&W C16180188602A	J1839 (High/15782 CPE)
Brakes	Bendix EC-60 Advanced ABS	5Q16151353	0841062 0841160	J1839 (High/1583 Low)
Instrument Cluster	W6vo Instrument Cluster	1C218860	22574886 21728906 32428667	J1839 (High/1582 Low)
Vehicle ECU	W6vo Vehicle ECU	15111413	22155668 22046075 22046681	J1839 (High/1581 Low)
Over the Air (OTA) Gateway to Fleet Unit	W6vo Phase	4190064	2168943 2193000 21778803	J1837 (Low)
Aftermarket Traction Module	W6vo Aftermarket Control Module	1000940	2280380	J1839 (High/15782 CPE)

Print Date: September 26, 2017 1:00:21

### Vehicle Key Data Points

Parameter Description	Value	Parameter Description	Value
Avg Fuel Econ	5.88 mpg	Idle Fuel Used	5,089.60 gal
DPF Soot Level	Low	Total Idle Hrs	4,114.90 hrs
DPF Delete	Low	Idle Shutdown	5.00 min
Total Engine Hrs	11,231.20 hrs	Battery Potential	28.50 volts
Cruise Spd Limit	87.00 mph	Road Speed Limit	78.00 mph
Malfunction Indicator Lamp	Off	Red Stop Lamp	Off
Amber Warning Lamp	Off	Protect Lamp	Off
Parking Brake Switch	On	DPF Lamps Command	Off
Exhaust System High Temperature L	Off	ABS Control Status	Off
ABS Control Status - Trailer	Not Available	Engine Speed	1002 rpm
Odometer	325,985.10 mi	Engine Odometer	325,985.00 mi
Instrument Cluster Odometer	325,985.00 mi	Fuel	50%
Engine Oil	Normal	Coolant	Normal
Direct Exhaust Fuel	Normal		

### Vehicle Issues

 1 Active Fault(s) Present

### Faults

Status	Component	Description	Lookup Code	PM	Count
Active	Filter	DP - Gas engine: Interfilter is clogged	PSID 10	3	1
Active	Filter	DP - Mechanical system not responding properly	PSID 16	7	1
Active	Filter	Air Input 1 - Current below normal to open circuit	PSID 12	3	01
Active	Filter	Air Input 2 - Current below normal to open circuit	PSID 13	3	01
Active	Vehicle Logic Control Unit / Vehicle Management System A3	Underserved Fault - Contact Air chiller for PSID 511 Detail	PSID 141	5	1
Active	Vehicle Logic Control Unit / Vehicle Management System A3	Underserved Fault - Contact Maintenance for PSID 543 Detail	PSID 140	3	1

Print Date: September 26, 2011 1:06 pm

Status	Component	Description	Lookup Code	FM	Count
Active	Vehicle Logic Control Unit / Vehicle Management System #3	Underserved Fleet - Contact Manufacturer for P01D 08 details	P01D 08	5	1
Inactive	D13	Intake Air Temperature Sensor 2 Circuit Range Performance (Bank 1), Signal Plausibility Failure	P010804	N/A	1
Inactive	D13	Intake Air Temperature Sensor 1 Circuit Range Performance Bank 1 - Signal Plausibility Failure	P011104	N/A	1
Inactive	D13	Engine Exhaust Gas Recirculation - Valve Position Flow Insufficient Detected, No additional information	P040100	N/A	16
Inactive	D13	Exhaust Gas Recirculation Temperature Sensor "A", Circuit open	P040413	N/A	3
Inactive	D13	Exhaust Gas Recirculation Temperature Sensor "A" Circuit Range Performance, Signal Plausibility Failure	P040804	N/A	2
Inactive	D13	Closed Loop DGR Control As Limit - Flow Too Low, No additional information	P040900	N/A	01
Inactive	D13	DGR Temperature Too High, No additional information	P112100	N/A	21
Inactive	D13	Valve Compression Brake (VCB) Control Oil Temperature Too Low, No additional information	P114000	N/A	N/A
Inactive	D13	Brake Control Module "A" Lost Communication With Invaluable Pulse Output (PG) Control Module, No additional information	P115400	N/A	N/A
Inactive	D13	Reduction Tank Temperature Sensor Circuit Range Performance, Signal Plausibility Failure	P208804	N/A	1
Inactive	D13	Aftertreatment Regeneratory Dosing Valve Clogged, No Sub Type Information	P208E00	N/A	N/A
Inactive	D13	NOx Sensor Bank 1 Sensor 1, Signal plausibility failure	P220104	N/A	1
Inactive	D13	EGR Slow Response, No additional information	P240F00	N/A	1
Inactive	D13	Exhaust Gas Recirculation Control Efficiency Below Threshold, No Sub Type Information	P245700	N/A	14
Inactive	D13	Engine Coolant Level Low, No additional information	P250000	N/A	N/A
Inactive	D13	Pleasure Cooling Oil Control, Circuit open	P25A013	N/A	3
Inactive	D13	CAN Communication Backbone 2 (No. Bus 01)	U000100	N/A	N/A
Inactive	EC-90 Advanced ABS	J1100 Serial Communication, J1173 Serial Link (SPN 628 FM 12)	11-1	N/A	1
Inactive	EC-90 Advanced ABS	J1100 Serial Communication, J1173 Invalid Data from Transmission (SPN 639 FM 2)	11-10	N/A	1
Inactive	EC-90 Advanced ABS	J1100 Serial Communication, J1173 Retarder (SPN 639 FM 14)	11-2	N/A	1

Print Date: September 26, 2021 1:06 pm

Status	Component	Description	Lookup Code	PM	Count
Inactive	EC-80 Advanced ABS	U1999 Serial Communication J1939 Engine Communication (SPN 659 PM 2)	11-3	N/A	2
Inactive	EC-80 Advanced ABS	Drive Axle Right Wheel: Loss of sensor signal (SPN 750 FM 10)	5-4	N/A	2
Inactive	Information Display	SAE - Service Brake Circuit 1 Air Pressure - Data valid but below normal operational range - Most severe level	SPM 1287	1	20
Inactive	Information Display	SAE - Service Brake Circuit 2 Air Pressure - Data valid but below normal operational range - Most severe level	SPM 1288	1	4
Inactive	Road	CD - Faulty device or component	PSID 10	12	1
Inactive	Road	Acc Inlet 1 - Voltage below normal or shorted to lower voltage	PSID 12	4	24
Inactive	Road	Motor Inlet 1 - Voltage below normal or shorted to lower voltage	PSID 14	4	2
Inactive	Road	Data Link M0 128 - Abnormal update rate	PSID 200	8	1
Inactive	Road	Audio RF antenna - Unidentified error	PSID 8	11	2
Inactive	Road	Audio USB - Data error; intermittent or incorrect	PSID 9	2	1
Inactive	Road	Audio USB - Current above normal or grounded circuit	PSID 9	0	1
Inactive	Road	SAE J1708/1927 data link - Data error; intermittent or incorrect	SD 258	2	1
Inactive	Road	Controller 1 - Voltage below normal or shorted to lower voltage	SD 254	4	28
Inactive	Vehicle ECU	Data Link M0 128 - Abnormal update rate	PSID 200	3	8
Inactive	Vehicle ECU	Data Link M0 138 - Abnormal update rate	PSID 200	9	1



- Home
- Dashboard
- My Reports
- My Alerts
- My Tools
- My Settings
- My Account
- My Profile
- My Favorites
- My Recent
- My History
- My Lists
- My Groups
- My Roles
- My Permissions
- My Notifications
- My Help
- My Support
- My Feedback
- My Logout

### JPRO® Repair Mentor

Let us help guide your repair decisions

Any diagnostic issues affecting vehicle health are listed below in preferred diagnostic order

Click on issue to see more information

To expand this screen, click the vehicle health button in Vehicle Dashboard

**Camera Vehicle Issues**

**7 Active Other Fault(s)**



**7 Active Other Faults**

One or more active or persistent faults were detected at run-down or vehicle components have faults observed in addition to the faults as possible. Click Single Diagnostic to investigate the issue.

Click on the Repair Mentor for this Connection

Vehicle ID: [unreadable]

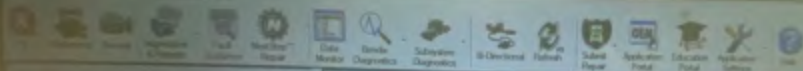
Single Diagnostic

Close



DELL





1 - Warning(s) Present

Help

Vehicle Diagnostics

- Vehicle DTC
- Alison 8004000 Tds Docs
- Manitou S2-400 Addressed ABS
- Owner Information Display
- Manitou Cargo Control Unit / Vehicle Management
- Vehicle Addressment Control Module
- Vehicle Radio
- Owner Network ECU

Copyright © 2017 Manitou. All rights reserved. This information is provided for informational purposes only. It is not intended to be used as a substitute for professional advice. Please consult your dealer for more information.

Status	Component	Description	Severity	Clear
OK	Radio	Radio RF antenna - Unacceptable error	High	Clear
OK	Radio	Radio USB - Data error, interrupted or incorrect	High	Clear
OK	Radio	Radio USB - Current above normal or grounded circuit	High	Clear
OK	Radio	SW 2.1 (SW 2.0) Data Bus - Data write, interrupted or incorrect	High	Clear
OK	Radio	Controller 1 - Voltage below normal or checked to loose voltage	High	Clear
OK	Vehicle ECU	Data Link 100 - DTC - Abnormal update rate	High	Clear



Real Speed Limit

**78** mph

[Click to Change](#)

Crane Real Limit

**87** mph

[Click to Change](#)

59

59

Idle Shutdown

**5** min

[Click to Change](#)

Battery Potential

**283** V

Engine Speed

47149

50386

Total Engine Hrs

**112362** hrs

325985.1 mi



Upper Door Open  
Lower Door Open  
COMPL.DWG  
Lexus, Land Rover, Honda, Fiat, Opel



PREVOST® 16

MANUFACTURED BY: PREVOST  
FABRIQUE PAR : STE - CLAIRE, QUE.

DATE OF MFG. / DATE DE FAB. 05/15

EC

G. V. W. R. : 24040 KG. (53000 LBS).  
P. N. B. V. :

AXLES/ ESSIEUX	G. A. W. R. / P. N. B. E.	TIRES/ PNEUS	RIMS/ JANTES	COLD INFLATION PRESS. / PRESS. A FROID	SINGLE OR DUAL/ SIMPLE OU DOUBLE
	KG (LBS)			KPA (PSI)	
FRONT :	7484 (16500)	315/80R22.5 (L)	22.5X9	827 (120)	S
FRONT :					
MID :	10206 (22500)	315/80R22.5 (L)	22.5X9	586 (85)	D
DIFF. :					
REAR :	6350 (14000)	315/80R22.5 (L)	22.5X9	689 (100)	S
TANDEM :					

THIS VEHICLE CONFORMS TO ALL APPLICABLE U.S. FEDERAL MOTOR VEHICLE SAFETY STANDARDS IN EFFECT ON THE DATE OF MANUFACTURE SHOWN ABOVE.

VEHICLE IDENTIFICATION NO.  
NO. IDENTIFICATION VEHICULE

TYPE : BUS B/A

#408301













CHEVROLET

H3









H3  
24





PREVOST



1/1

 Luggage Door

 mi	1 192.0	2 824.3	12:44
--	------------	------------	-------

325985.0mi

ULTRA Low SULFUR Diesel Fuel Only















FLUSH

WATER





BFGOODRICH

330

SAVITALL







**VOLVO**

VOLVO POWERTRAIN CORPORATION

**IMPORTANT ENGINE INFORMATION**  
 RENSEIGNEMENTS IMPORTANTS MOTEUR

 ENGINE FAMILY: FVPTH12.8G01  
 FAMILIE DE MOTEURS

 ENGINE MODEL: D13J435P  
 MODELE MOTEUR

 SERIAL NO. 131112095  
 NO. SERIE

DISPLACEMENT	ADVERTISED HP @ RPM	FUEL RATE @ ADVERTISED HP	IDLE SPEED	ENGINE BRAKE
CYLINDRES	POISS. SPEC. @ TOURS / MIN.	DEBIT DE CARB. @ POISS. SPEC.	RALENTI	FREIN MOTEUR
12	8 L	435 (1700)	256 mm <sup>3</sup> / STROKE	I-VEB
			mm <sup>3</sup> / COUP	

THIS ENGINE CONFORMS TO U.S. EPA AND CALIFORNIA REGULATIONS APPLICABLE TO 2015 MODEL YEAR  
 NEW HEAVY DUTY ENGINES AND HAS A PRIMARY INTENDED SERVICE APPLICATION AS A HEAVY HEAVY DUTY DIESEL ENGINE.

Ce moteur est conforme aux réglementations de Californie et de l'Agence de Protection de l'Environnement des États-Unis applicables aux moteurs diesel Heavy Duty (Gamme lourde) modèle 2015.  
 La principale application s'adresse aux usages de type gamme lourde (heavy heavy duty).

 STANISIS EMISSION CONTROL SYSTEM  
 DISPOSITIF ANTI-POLLUTION

 THIS ENGINE IS CERTIFIED TO OPERATE ON  
 ULTRA LOW SULFUR DIESEL FUEL ONLY.

TC, CAC, FGR, DDT, ECM, DOC, PTOX, SCR, AIOX

 LABEL NO.  
 012824

VALVE LASH / Jeu Soupapes

INLET ROCKER 0.2 mm

ADMISSION CULBUTEUR

EXHAUST ROCKER 1.0 mm

ECHAPPEMENT CULBUTEUR

DELEGATED ASSEMBLY

 VOCATIONAL  
 VEHICLES ONLY
**PREVOST****VEHICLE EMISSION CONTROL INFORMATION**

PREVOST, A DIVISION OF VOLVO GROUP CANADA INC.

VEHICLE FAMILY IDENTIFICATION: GVPT2VOCVF00 VIN: 2PCH33496GC713072

REGULATORY SUB-CATEGORY: Heavy heavy duty vocational vehicle

DATE OF MANUFACTURE: 07/2015

VEHICLE EMISSION CONTROL SYSTEM: LRRA.

 THIS VEHICLE COMPLIES WITH CALIFORNIA AND U.S. EPA REGULATIONS FOR 2015  
 MODEL YEAR VEHICLES.







