

Detailed Equipment Information

Print




Download All Photos

2021 HAMM HD+ 120I VO / TAR

- [General Appearance](#)
- [Control Station](#)
- [Engine](#)
- [Drivetrain](#)
- [Hydraulics](#)
- [Chassis](#)
- [Deficiencies](#)
- [Logistics Information](#)

GENERAL APPEARANCE

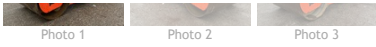
[Back To Top](#)

SERIAL NUMBER / VIN	WGH0H274LHAA00085	
CE MARK	CE Marked	
SELLER REFERENCE NUMBER	Seller Reference or Fleet Number:	
TIRES/ UNDERCARRIAGE	Percentage Rating:, 75	
HOUR METER / ODOMETER	3005 hrs, Meter reading could not be obtained	
CONDITION	Overall Condition for Age:, Good	
FEATURES	Open Operator Station, Swivel Operator Controls, Tier 4, US EPA Label, Deutz TCD 4.1L4 4 Cylinder 4.1 L Diesel Engine, 78 in Offsetting Compaction Width, Water System	



1 of 7





CONTROL STATION

[Back To Top](#)

CONTROL STATION	Open Operator Station, Swivel Operator Controls
LIMITED FUNCTION CHECK	The main components are in place and operational as noted.



1 of 6



ENGINE

[Back To Top](#)

EMISSIONS STATUS	Tier 4
EMISSIONS STATUS	US EPA Label
ENGINE	Deutz TCD 4.1L4 4 Cylinder 4.1 L Diesel Engine
LIMITED FUNCTION CHECK	The engine started and ran.



1 of 5



DRIVETRAIN

LIMITED FUNCTION CHECK	The drivetrain was operational.
-------------------------------	---------------------------------

[Back To Top](#)



Photo 1



Photo 2



Photo 3

HYDRAULICS

LIMITED FUNCTION CHECK	The hydraulic system could not be operationally checked.
-------------------------------	--

[Back To Top](#)

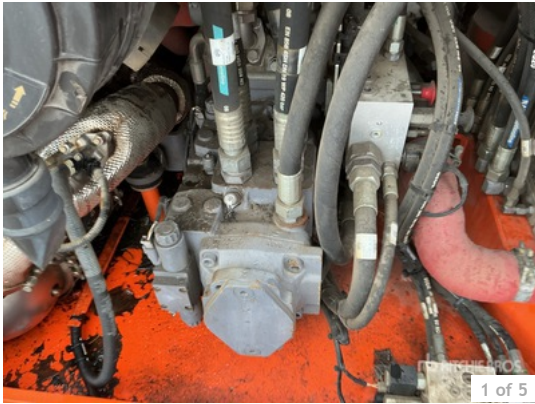


Photo 1



Photo 2



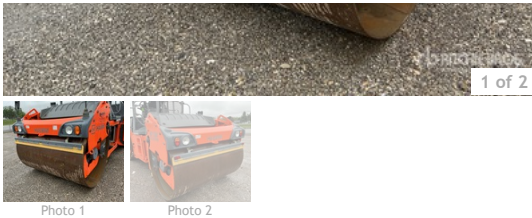
Photo 3

CHASSIS

COMPACTION DETAILS	78 in Offsetting Compaction Width, Water System
---------------------------	---

[Back To Top](#)





DEFICIENCIES

DEFICIENCIES Deficient Components/Systems Include but are not limited to: Electric Section

[Back To Top](#)

LOGISTICS INFORMATION

GENERAL SHIPPING INFORMATION No: Does this Unit Run? No: If self propelled, does the unit travel? No: Is the unit taller than 12'? No: Is the unit wider than 8'6"? No: Inflated Tires - item can roll? No: Noticeable fluid leaks?

[Back To Top](#)

DISCLAIMER

General

The Detailed Equipment Information is limited in scope, and Ritchie Bros. Auctioneers has not inspected any aspects or components of the equipment other than those expressly set forth herein. Unless expressly stated, we make no representations or warranties, express or implied, concerning the equipment or its components, including without limitation any representations or warranties concerning functionality, conformity or compliance with any safety standard or requirement of any applicable authority or regulatory body, fitness for any particular purpose, or merchantability. You are strongly advised to perform your own detailed inspection of the equipment prior to bidding.

Functions

Equipment is not tested under load. We make no representation or warranty that equipment is operating in accordance with manufacturers' specifications. No inspection has been performed with respect to any functionality aspect other than those expressly included herein. Only select photos have been provided for individual undercarriage components, and may not be indicative of the condition of the entire undercarriage as a whole.

Dimensions

Measurements are given as an estimate only. Actual loaded dimensions may vary based on truck/trailer height and the loaded machine configuration/position. It is the buyer's responsibility to measure all loads before leaving our auction site to ensure the load is safe for transport. All measurements should be verified by the buyer. DO NOT rely on these measurements for transportation purposes