

CLAAS 960

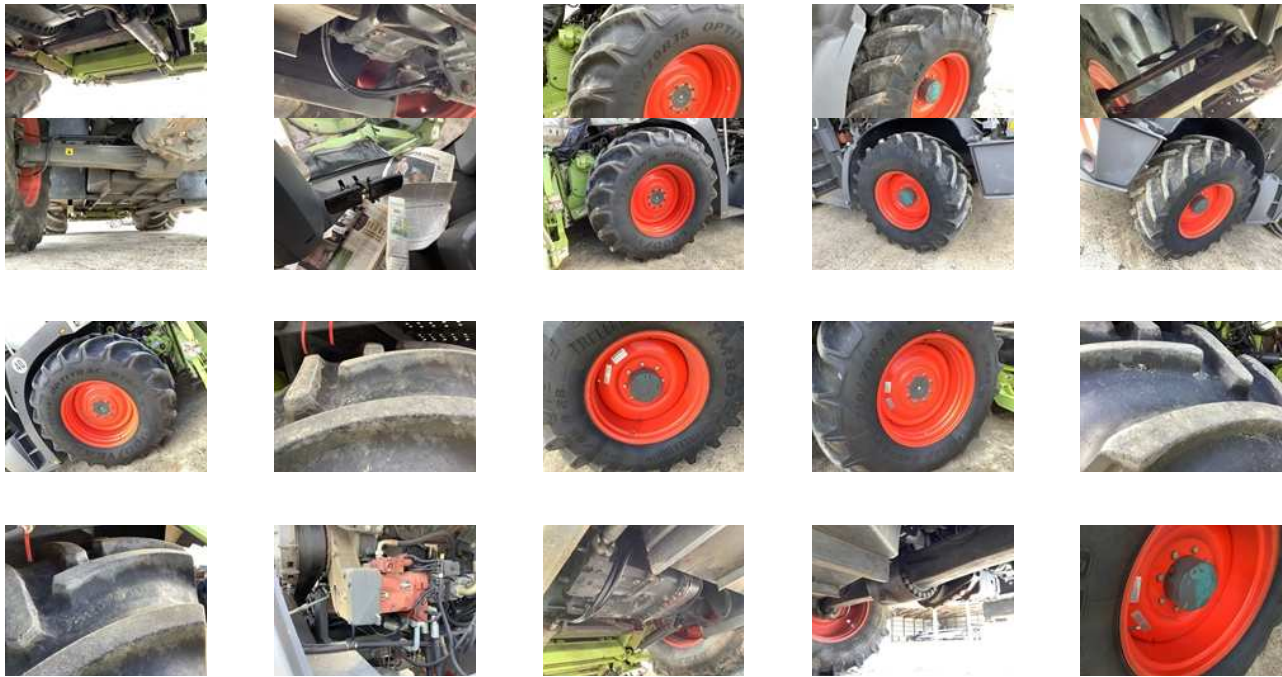
UNIT: 49402182

 [View Asset](#)









GENERAL APPERANCE

UID	49402182	CE Certificate Available	CE Marked
Pre-Operational Checks	Confirm Fluids Checked: Engine Coolant. Confirm Fluids Checked: Engine(s) Oil. Confirm Fluids Checked: Hydraulic Fluid. Confirm Fluids Checked: Fuel Level. N/A: Transmission Fluid		
Steps/Ladder	Good	Sheet Metal (Fiberglass) Condition	Left rear rubber quarter fender 1 inch chip broken off
		Exterior Lights	Operational
		Cab	No visible damage
		Hand Rails	Good

MODEL DESCRIPTION

Model	960	Model Family	4WD
--------------	-----	---------------------	-----

MODEL

Control Station Details
 Cutterhead 1569 hrs, Air Conditioner, Air Ride Seat, Hydrostatic Drive

SAFETY

Travel Alarm	Operational	Horn	Operational
Seat Belts	Operational	Safety Lock Out/Stop	Operational

Current Safety Manual No

Current Operator/Maintenance Manual No

CONTROL STATION

Seat Normal wear

Mirrors Good

Steering Control Good

Hydraulic Controls Good

Drivetrain Controls Good

Dash Console Good

Warning Lights Operational

Gauges Operational

Hour Meter/Odometer (Start) 1977.89 hrs

Hour Meter/Odometer 1978.69 hrs, Operational hour meter

Air Conditioner Operational

Cab Heater Operational

Limited Function Check (Control Station)
The main components are in place and operational as noted., Drivers door inside cushions panel missing. Right side bottom panel 1" section cut out.

ENGINE

Emission Status 2010 US EPA Label

A/C Compressor Operational

Starter Operational

Radiator Good

Oil Leaks No dripping leaks

Fuel Leaks No dripping leaks

Coolant Leaks?
No dripping leaks There is fluid leak from the front cleaning propeller motor

Limited Function Check (Engine)
The engine started and ran.

DRIVETRAIN

Drive Motor Good

Final Drives Good

CORN HEADER

Crop Dividers
Steel, forage harvester Moderate to heavy wear/ worn holes

Connections Good

HARVESTER CHASSIS

Feed Rollers Moderate wear/ bent teeth

Cutterhead Moderate wear

Knives/Sickle Bar Moderate wear

Kernel Processor Yes

Belts/Pulleys	Good	Blower/Fan	Operational
Discharge Auger	Normal wear	Metal Detector	Yes
Automatic Lube System	Yes		

HYDRAULICS

Hydraulic Tank	Good	Hoses	Left side header lift cylinder hose leaking
Cylinders Dripping leak, Right front drum adjustment cylinder leaking		Cylinder Pins and Bushings Condition	Good
		Limited Function Check (Hydraulics)	The hydraulic system was operational.

CHASSIS

Steering Linkage	Good	Steering Wheel	Good
Frame	Weld repairs at rear tie down	Limited Function Check (Chassis)	The main chassis components were operational in a limited check.

CHASSIS

Master Cylinder	Good	Park Brake	Good
Limited Function Check (Brakes) The brake system functioned, stopping and holding the machine.		Right Front Tire	Cuts/tears
		Wheel Condition Rating	Good
Wheel Studs, Nuts, Lugs Rating	Good		

DRIVETRAIN HYDROSTATIC

Drive Motors	Good	Front Drive Axle	Good
Rear Drive Axle	Good	Limited Function Check (Drivetrain - Rubber Tire)	The drivetrain was operational.