







**HARLO**

QUINN LIFT  
HP8500

HARLO

4x4

rlb.com.au



TIER 4  
Emissions

fb RITCHIE BROS.  
Auctioneers













HP8500

4x4

EXTRADIGER

R-14.0

OS.



CAUTION

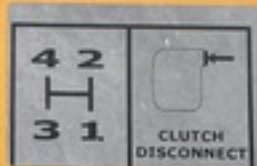






**PARK BRAKE**

Always set park brake  
before leaving seat





**CAUTION**

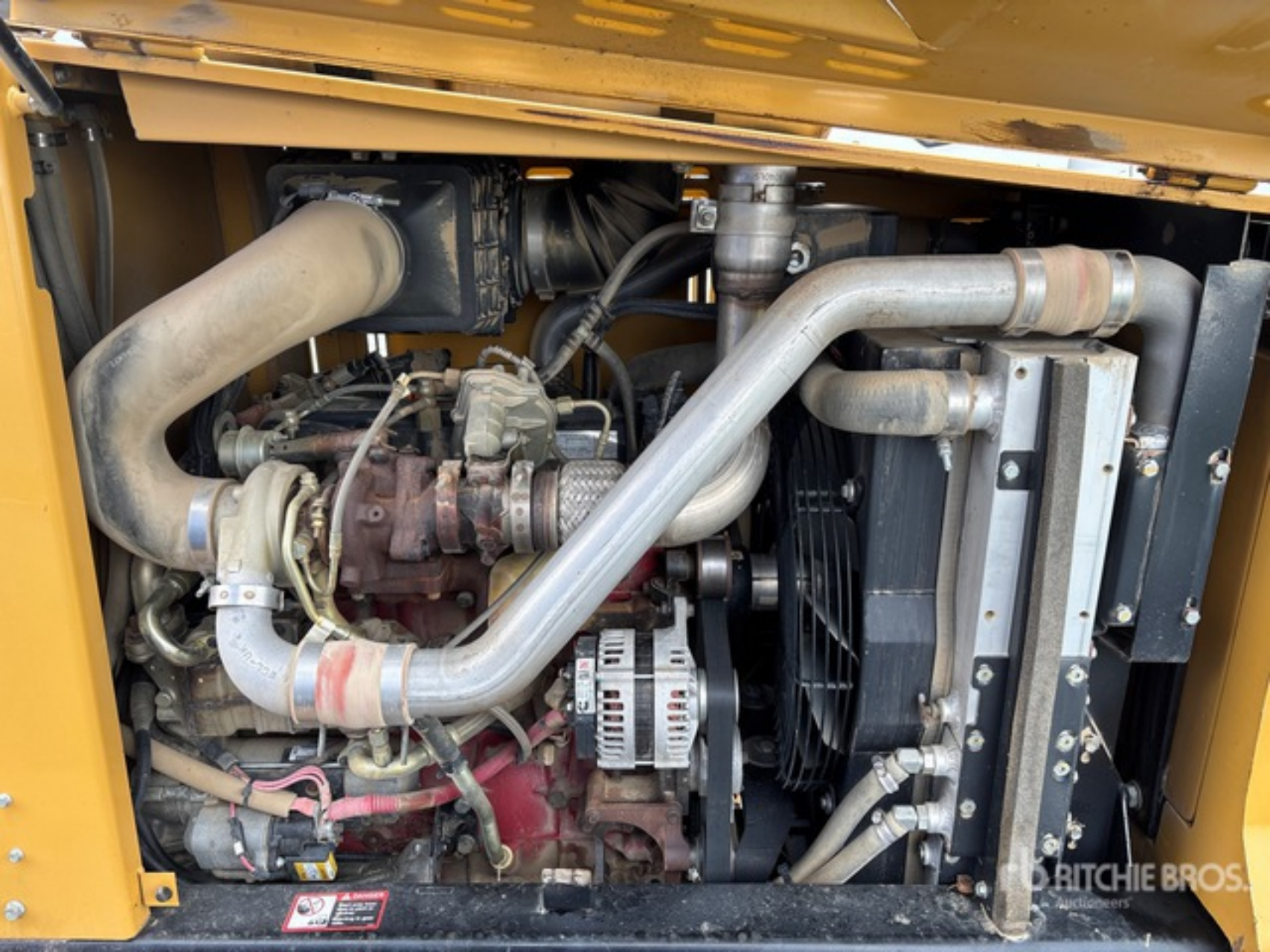
DOWN  
FORWARD  
REVERSE  
LEFT

NEUTRAL  
BRAKE



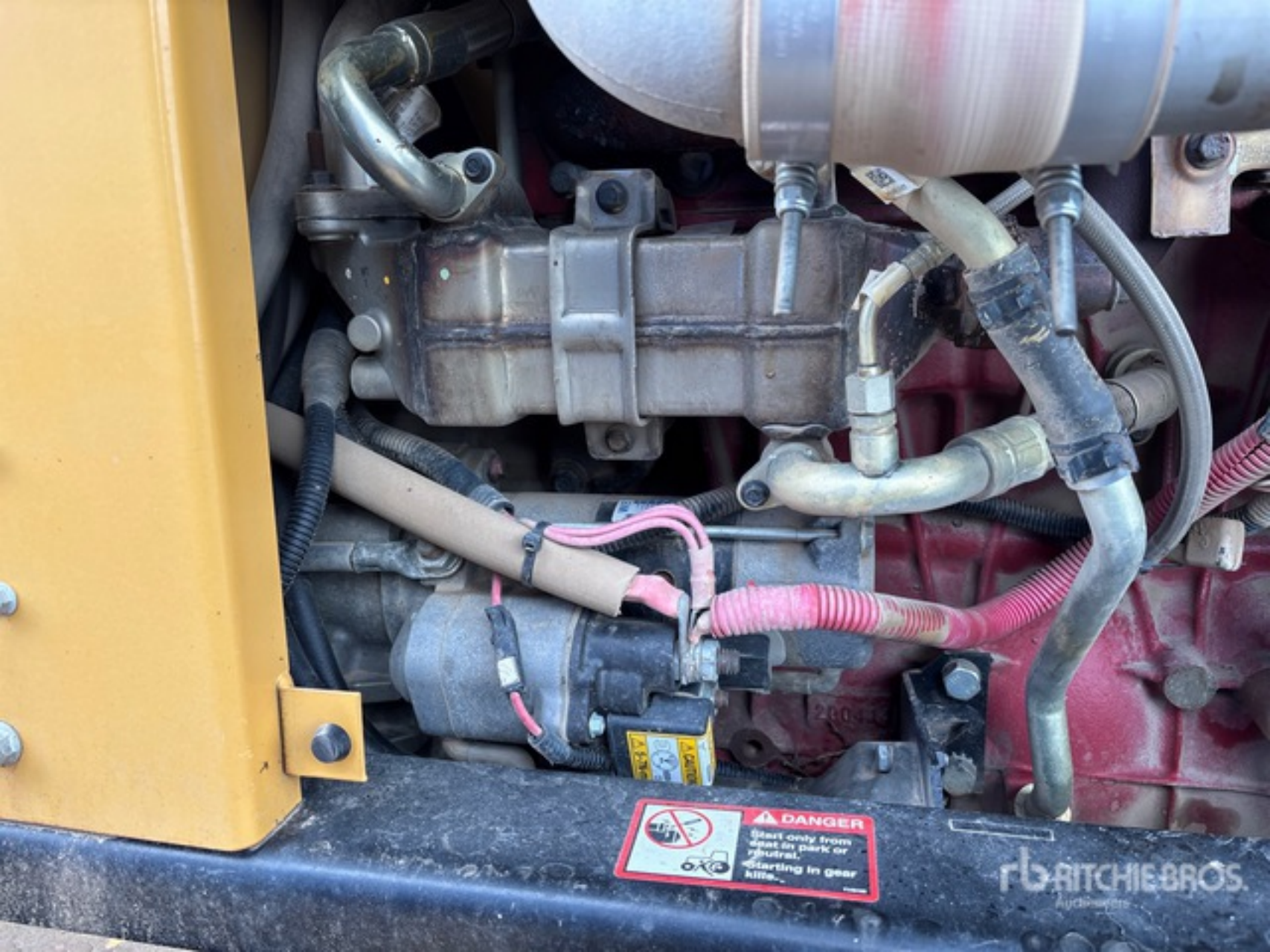






WARNING  
4000  
10000

BITCHE BROS.  
Auctioneers



**⚠ DANGER**  
Start only from  
dead in park or  
neutral.  
Starting in gear  
kills.

**FB RITCHIE BROS.**  
Auctioneers



THE BROS.  
EQUIPMENT

OMC INC.  
Manufactured in  
Great Britain



Model QS3.8 130  
Engine No. 22458990

EPA

FEL

CARB

Firing Order 1 3 4 2

Date of Mfg. 23DEC20

CE

Power Category  
27 - 36 kW

NOx

NOx

Idle Speed (rpm) 1000

Family MCEXL03 BAAC

Ref. No. 100873 RTVA

ECRODC FOR DETC

Catalyst No.

PM

(T)

CPN 4770 CIDA 220 / 3.8

Approved kW 36

at 2500 rpm

Valve Lash Cold 0.012 Int. 0.022 Exh

Fuel rate at idly. HP/kW 5.4 min<sup>3</sup>/stroke

SO28134 FR95207

Timing - 11° ELECTRONIC

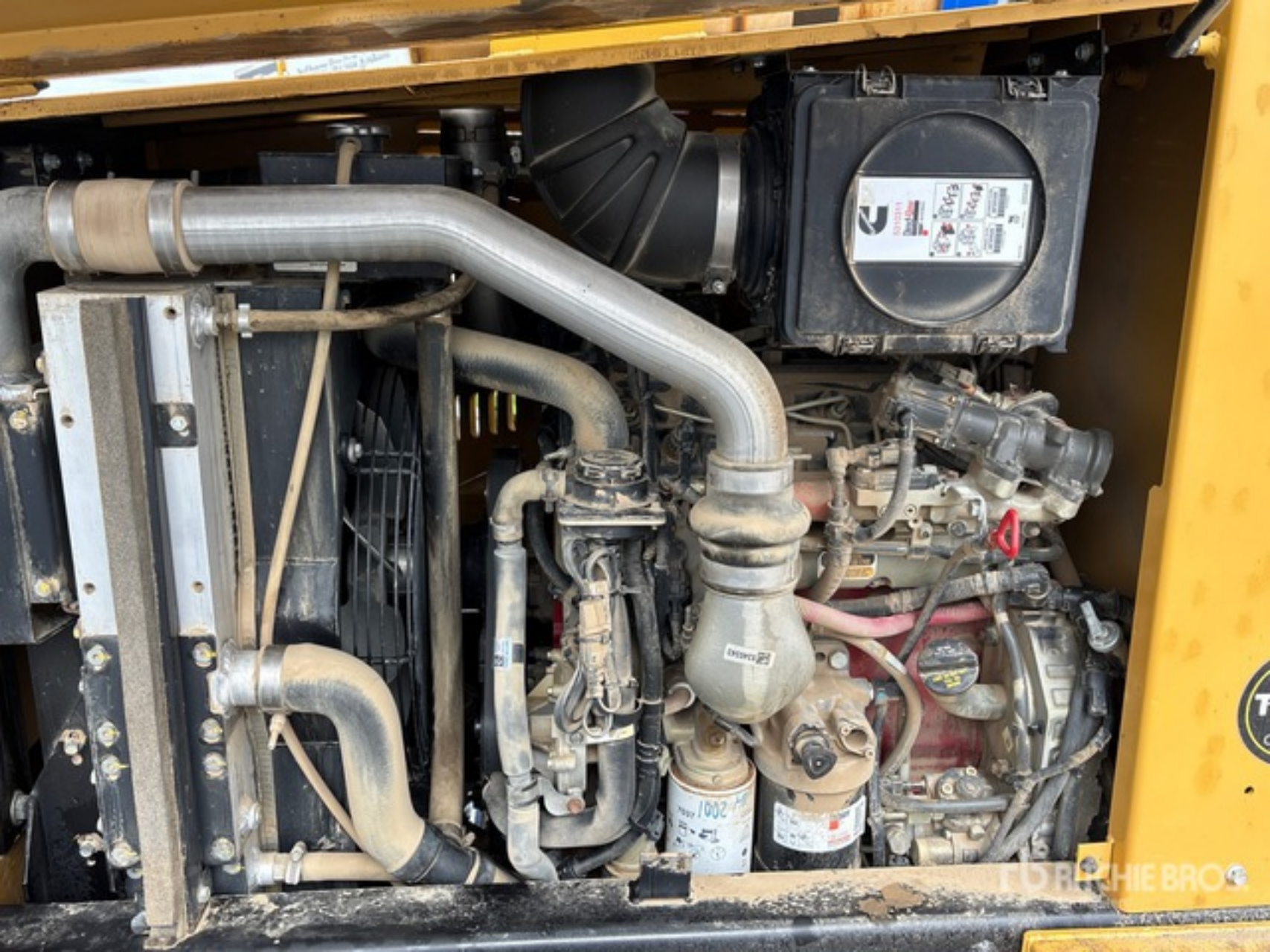
FOR FULL OPERATIONAL INFORMATION THIS ENGINE COMPLIES WITH U.S. EPA REGULATIONS FOR NON-ROAD AND  
EUROPEAN UNION, CANADA AND CALIFORNIA REGULATIONS FOR DIESEL AND DIESEL ENGINES, ULTRA LOW SULFUR FUEL  
EMERGENCY ONLY - EM-EXE ENGINES NOT FOR USE IN EU NON-ROAD MOBILE MACHINERY

This engine conforms to directive  
97/24/EC. This engine is certified to  
operate on diesel fuel.

WARNING: Injury may result  
and warranty is voided if fuel  
rate, rpm or adjustment exceed  
published maximum values for  
this model and application.

5001747

FLITCHIE BROS.  
Machinery



Labels on the control box cover, including:  
- A logo with a stylized 'G'  
- 'Dodge' logo  
- 'Cummins' logo  
- 'Isuzu' logo  
- 'Hyundai' logo  
- 'Kubota' logo  
- 'Sany' logo  
- 'Takeuchi' logo  
- 'Yanmar' logo

1002

1002

TORCHIE BRO

WARNING  
DO NOT USE ETHER

EQUIPPED WITH ELECTRIC HEATER  
PROHIBITING AID. USE OF ETHER MAY  
EXPLODE ON AND SEVERE INJURY

ACEA/EURO-4  
API CJ4  
SN-40  
ENGINE  
OIL FILL  
LOW ASH OIL ONLY

TRANSMISSION  
OIL

7  
Cof



FOURTECH BROS.  
1988-2018



FLORIANE ANOS

**NOTICE**

THIS FORKLIFT MEETS REQUIREMENTS  
UNDER ANSI/ITSDF SAFETY STANDARD  
B56.6-2016

98

<b>MAKE</b>		<b>MODEL</b>	
HARLO		HP8500-4WD-22-85	
<b>MAST SERIAL NO.</b>	<b>FRAME SERIAL NO.</b>	<b>FORKLIFT SERIAL NO.</b>	
95944	110723	104723	
<b>MACHINE WEIGHT</b>	15274 LBS.	<b>WITH MAST AND FULLY COUNTERWEIGHTED</b>	
<b>RATED CAPACITY</b>	8500 LBS.		
<b>ALTERNATE CAPACITIES</b>	6500 LBS.		
	2500 LBS.		
	NONE LBS.		

**CORRECT WEIGHT ON STEER TIRES WITH MAST VERTICAL AND FORKS EMPTY.**

19902

**CAUTION**

MOVE TRUCK WITH EXTREME CAUTION WHEN LOAD IS ELEVATED.  
ALWAYS CARRY LOAD IN DOWN POSITION WHEN IN TRANSIT.  
EXTENDED FORWARD TILT IS POSSIBLE — TILT FORWARD WITH EXTREME CAUTION.

**FOR SAFETY — TRAINED OPERATORS ONLY**

KNOW LIFT TRUCK SAFETY RULES, OPERATION, AND MAINTENANCE INSTRUCTIONS CONTAINED IN YOUR OPERATOR'S GUIDE.



4  
H  
3







RTB RITCHIE BROS.





WARNING: OPERATOR MUST WEAR SEATBELT AT ALL TIMES

HARLOW

WARNING  
OPERATOR MUST WEAR SEATBELT AT ALL TIMES

RITCHIE BROS.  
Auctioneers



fb RITCHIE BROS



