



**DEKRA Services Inc.**  
**Customer Service 770-257-0107**

**BUS**

INSPECTOR: 5449  
 INSPECTION ID  
 139745

INSP DATE | VIN (LAST 8) | PO NUMBER  
 04/20/2021 | J3081136 |

Year: 2018 Make: VAN HOOL  
 Model: CX45 VIN: YE2XC82B9J3081136

SPECIFICATION WORKSHEET

<b>Interior Options</b>	
Interior Color:	GRAY

<b>Steering Options</b>	
Power Steering?:	Yes

<b>Engine Options A</b>	
Eng Make:	CUMMINS
Eng Model:	ISX12
Eng Serial:	75063516
Eng HP:	425
Cruise:	Yes
Clean air idle:	No

<b>Overall Condition</b>	
Overall Length:	45
Overall Height:	11'6"
Overall Width:	102

<b>Engine Options B</b>	
Odometer:	98565
Hub odometer:	
ECU HP:	425.10
ECU Miles:	98042
Eng Hours:	3220

<b>Miscellaneous</b>	
Seating Capacity:	56
Electronic Engine Controls:	Yes
Full Gauge Package:	Yes
Wraparound Dash:	Yes
Power Mirrors:	Yes
Tilt / Telescopic Steering Wheel:	Yes
AirRide Driver's Seat:	Yes
Restroom:	Yes
PA System:	Yes
Audio - Video System:	Yes
Number of Video Monitors:	4
Multi-Disc CD Changer:	Yes
Individual multi-Channel Audio System:	Yes
Global Positioning System:	Yes
In Motion Satellite TV System:	Yes
Road Viewing Monitor System:	Yes
Wheelchair Lift:	Yes
Underfloor Storage with Lift:	No
Parcel Rack Storage with Lift:	No
Traction Control:	Yes
Power Windshield Sun Visors:	Yes
Tour Guide Seat:	No
Other:	
Was Unit driven In ?:	Yes
Did Unit need to be jump started ?:	No
Was Unit towed in ?:	No
Did Unit start and run ?:	Yes
Unit Condition:	GOOD
If Unit is not driveable or will not start, Explain:	
Any extra options or features not listed on front page and any additional comments: 120 v plugs	

<b>Engine Options C</b>	
Eng Brake:	DRIVELINE
Fuel:	DIESEL
FT1 Capac (Gal):	240

<b>Exterior Options A</b>	
Air Horns:	SINGLE
Mirrors:	HEATED DUAL POWER
Exterior Color:	WHITE

<b>Axle / Susp Options</b>	
WheelBase (In):	306
Rear Ratio:	N/A
F Axle (lbs):	17640
R Axle (lbs):	27575
GVWR (lbs):	54,000
Suspension:	AIR RIDE
Tag Axle Capacity:	17640
Rear Axle Model:	NA
Independent Front Suspension:	Yes
Full Coach Raise and Lowering Susp.:	Yes
Tag Axle Unloading System:	Yes
Front Susp. Kneeling System:	Yes

<b>Transmission Options</b>	
Trans Make:	ALLISON
Trans Model:	B500
Trans Speed:	6



**DEKRA Services Inc.**  
**Customer Service 770-257-0107**

**BUS**

INSPECTOR: 5449  
 INSPECTION ID  
 139745











INSP DATE | VIN (LAST 8) | PO NUMBER  
 04/20/2021 | J3081136 |

Brakes Options	
ABS:	YES
HYD:	NO
AIR:	YES
DISK:	YES
DRUM:	NO
Brake Plates:	FRONT N / REAR N

Brakes	
Drive Axle Brakes:	(1)
	(2)
	(3)
	(4)
	(5)

Tires [Front]	
Size:	315/80 R22.5
Wheels:	ALUMINUM
Detail:	

Tires [Rear]	
Size:	315/80 R22.5
Wheels:	ALUMINUM
Detail:	

	STEER AXLE	DRIVE AXLE #1	DRIVE AXLE #2
		8 / 32nd HIGHWAY / V	11 / 32nd /
RIGHT	6 / 32nd HIGHWAY / V 	 	 
FRONT		7 / 32nd HIGHWAY / V	/ 32nd /
		8 / 32nd HIGHWAY / V	/ 32nd /
LEFT	 5 / 32nd HIGHWAY / V	 	 
		6 / 32nd HIGHWAY / V	6 / 32nd /

Brake Legend
BD = DRUM HAS MORE THAN 1/16 INCH LIP CL = CRACKED LINING LS = LEAKING SEAL(S)
Tire Legend
C = CUT D = DRY ROT F = FLAT M = MISMATCHED TIRES/CASING MA = MISMATCHED AXLES (FRONT vs. REAR) V = VIRGIN W = IRREGULAR WEAR R = RECAP: 1 = ONCE, 2 = TWICE, 3 = 3 TIMES
Tread Legend
H = HIGHWAY L = LUG



**DEKRA Services Inc.**  
**Customer Service 770-257-0107**

**BUS**

**INSPECTOR: 5449**  
**INSPECTION ID**  
**139745**

**INSP DATE** | **VIN (LAST 8)** | **PO NUMBER**  
04/20/2021 | J3081136 |

CONDITION REPORT

		COMMENTS
	Engine Compartment Area	
	Operational Test	
	In Cab Inspection	
	Outside Inspection	
	Under Vehicle Inspection	
	Tires/Wheels/Brakes	
X	Tires/Wheels	7 tires below specs

Additional Services	Requested	Status	Comments
---------------------	-----------	--------	----------



**DEKRA Services Inc.**  
**Customer Service 770-257-0107**

**BUS**

**INSPECTOR: 5449**  
**INSPECTION ID**  
**139745**

**INSP DATE** | **VIN (LAST 8)** | **PO NUMBER**  
04/20/2021 | J3081136

RECONDITIONING AND SUPPLEMENTAL ESTIMATE

ITEM	DESCRIPTION / COMMENTS
Tires/Wheels	X   7 tires below specs
REAR BUMPER	BROKEN
R/S CENTER PANEL	PAINT PEELED FROM VINYL REMOVE
ACTIVE AND INACTIVE CODES	
MOLDING	R/S REAR ENGINE DOOR
L/S DAMAGED FIBERGLASS	BETWEN DRIVE AND TAG AXLE
CHECK ENGINE LIGHT ON	
STOP ENGINE LIGHT ON	DIAG ONLY

**COMMENTS:**

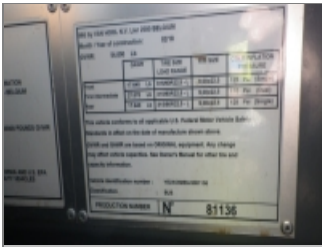


**DEKRA Services Inc.**  
**Customer Service 770-257-0107**

**BUS**

INSPECTOR: 5449  
 INSPECTION ID  
 139745

INSP DATE | VIN (LAST 8) | PO NUMBER  
 04/20/2021 | J3081136 |



VIN



DASH W/ STEERING WHEEL



LEFT SIDE



FRONT LEFT CORNER



FRONT OF BUS



FRONT RIGHT CORNER



RIGHT SIDE



REAR RIGHT CORNER



RIGHT REAR TIRES



REAR OF BUS



REAR LEFT CORNER



LEFT REAR TIRES



ENTRY WAY STEPS AT FRONT  
 DOOR



COMPLETE DRIVERS SEAT



ODOMETER



DASH HOUR METER



**DEKRA Services Inc.**  
**Customer Service 770-257-0107**

**BUS**

INSP DATE | VIN (LAST 8) | PO NUMBER  
 04/20/2021 | J3081136

INSPECTOR: 5449  
 INSPECTION ID  
 139745



INSIDE OF BUS, FRONT TO BACK



FLOOR OF BUS, FRONT TO BACK



INSIDE OF BUS, BACK TO FRONT



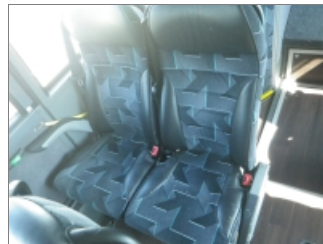
FLOOR OF BUS, BACK TO FRONT



INSIDE RESTROOM #1



INSIDE RESTROOM #2



SEATS



LEFT STEER TIRE



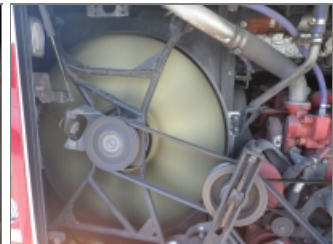
RIGHT STEER TIRE



ENGINE COMPARTMENT



ENGINE FAMILY NUMBER



ENGINE COMPARTMENT  
 RIGHT SIDE



ENGINE COMPARTMENT LEFT  
 SIDE



INSIDE STORAGE  
 COMPARTMENTS



OIL LEAKS



ADDITIONAL 1





DEKRA Services Inc.  
Customer Service 770-257-0107

**BUS**

INSP DATE | VIN (LAST 8) | PO NUMBER  
04/20/2021 | J3081136

INSPECTOR: 5449  
INSPECTION ID  
139745



ADDITIONAL 2



ADDITIONAL 3



ADDITIONAL 4



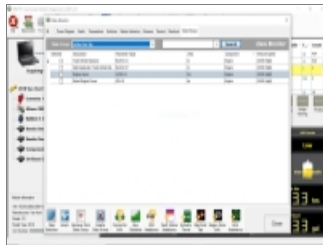
ADDITIONAL 5



ADDITIONAL 6



ADDITIONAL 7



ADDITIONAL 8



ADDITIONAL 9



ADDITIONAL 10



ADDITIONAL 11



ADDITIONAL 12