

## Detailed Equipment Information

Print



Download All Photos

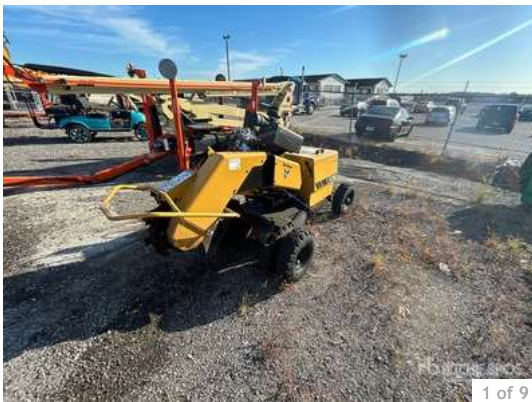
2024 VERMEER SC362 / ENV

- [General Appearance](#)
- [Control Station](#)
- [Engine](#)
- [Drivetrain](#)
- [Hydraulics](#)
- [Chassis](#)
- [Undercarriage](#)
- [Logistics Information](#)

### GENERAL APPEARANCE

[Back To Top](#)

SERIAL NUMBER / VIN	1VRF112YCR1005738	
SERIAL NUMBER LOCATION	Rear Frame Passenger Side	
SELLER REFERENCE NUMBER	Seller Reference or Fleet Number:	
TIRES/ UNDERCARRIAGE	Percentage Rating:, 90	
HOUR METER / ODOMETER	51 hrs	
CONDITION	Overall Condition for Age:, Very Good	
FEATURES	2023 US EPA Label, Briggs & Stratton 26.1 kW Engine, 20 in Grinding Wheel	



1 of 9



Photo 1



Photo 2

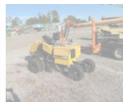


Photo 3

### CONTROL STATION

**LIMITED FUNCTION CHECK**

The item was not operational. The main components could not be operationally checked.

[Back To Top](#)

-  Photo 1
-  Photo 2

**ENGINE**

**EMISSIONS STATUS**

Other 2023 US EPA Label




[Back To Top](#)

**ENGINE**

Briggs & Stratton 26.1 kW Engine

**LIMITED FUNCTION CHECK**

The engine would crank but would not run.

-  Photo 1
-  Photo 2
-  Photo 3
-  Photo 4

**DRIVETRAIN**

**LIMITED FUNCTION CHECK**

The drivetrain could not be operationally checked.

[Back To Top](#)

-  Photo 1
-  Photo 2

**HYDRAULICS**

**LIMITED FUNCTION CHECK**

The hydraulic system could not be operationally checked.

[Back To Top](#)

-  Photo 1
-  Photo 2

**CHASSIS**

**FEATURES**




20 in Grinding Wheel

[Back To Top](#)

-  Photo 1
-  Photo 2
-  Photo 3

**UNDERCARRIAGE**

[Back To Top](#)

-  Photo 1
-  Photo 2
-  Photo 3
-  Photo 4

**LOGISTICS INFORMATION**

**SHIPPING DIMENSIONS**

9 ft Long x 4 ft Wide x 5 ft Tall

[Back To Top](#)

**DISCLAIMER**

General

The Detailed Equipment Information is limited in scope, and Ritchie Bros. Auctioneers has not inspected any aspects or components of the equipment other than those expressly set forth herein. Unless expressly stated, we make no representations or warranties, express or implied, concerning the equipment or its components, including without limitation any representations or warranties concerning functionality, conformity or compliance with any safety standard or requirement of any applicable authority or regulatory body, fitness for any particular purpose, or merchantability. You are strongly advised to perform your own detailed inspection of the equipment prior to bidding.

#### Functions

Equipment is not tested under load. We make no representation or warranty that equipment is operating in accordance with manufacturers' specifications. No inspection has been performed with respect to any functionality aspect other than those expressly included herein. Only select photos have been provided for individual undercarriage components, and may not be indicative of the condition of the entire undercarriage as a whole.

#### Dimensions

Measurements are given as an estimate only. Actual loaded dimensions may vary based on truck/trailer height and the loaded machine configuration/position. It is the buyer's responsibility to measure all loads before leaving our auction site to ensure the load is safe for transport. All measurements should be verified by the buyer. DO NOT rely on these measurements for transportation purposes