

ITEM DETAILS - 2015 John Deere 850 K

Wednesday, March 04, 2026

DETAILED EQUIPMENT INFORMATION

A qualified Ritchie Bros. employee collected detailed equipment information and performed functional tests on the key components of this asset.

General Appearance

Serial Number / VIN: 1T0850KXCEE263382

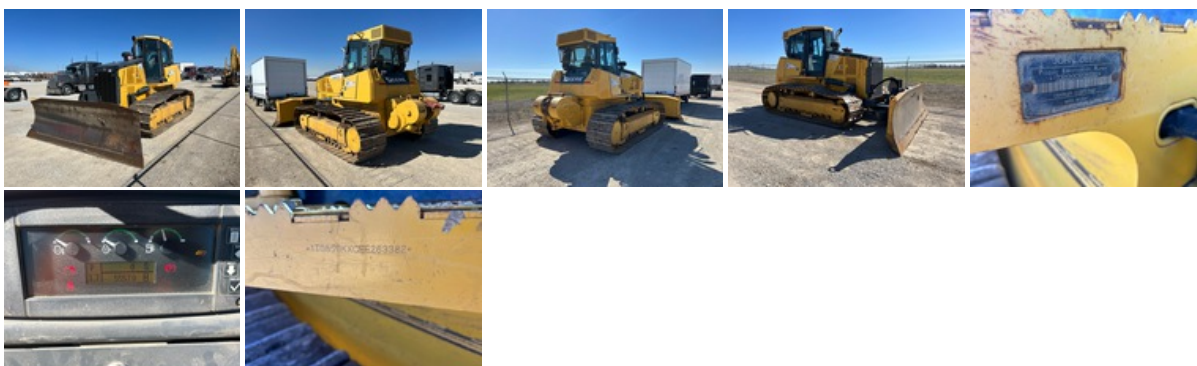
Seller Reference Number: Seller Reference or Fleet Number:

Tires/ Undercarriage: Percentage Rating:

Hour Meter / Odometer: 5557 hrs

Condition: Overall Condition for Age:, Good

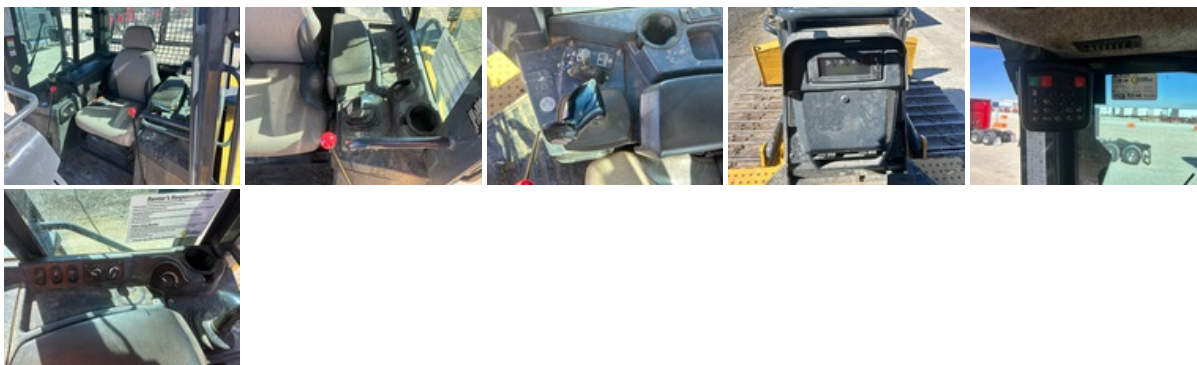
Features: Enclosed Cab, Air Conditioner, 2014 US EPA Label, 152 in Wide PAT Blade, 29.5 in Single Grouser Track Shoes, Allied H6H Winch, Drawbar



Control Station

Control Station: Cab Type: Enclosed Cab, Air Conditioner

Limited Function Check: The item was not operational. The main components could not be operationally checked. Cranks will not start



Engine

Engine: 2014 US EPA Label

Limited Function Check: The engine would crank but would not run.



Drivetrain

Limited Function Check: The drivetrain could not be operationally checked.



Hydraulics

Limited Function Check: The hydraulic system could not be operationally checked.



Chassis

Front Attachment: 152 in Wide PAT Blade



Undercarriage

Undercarriage: 29.5 in Single Grouser Track Shoes



Specialty

Rear Attachment: Allied H6H Winch, Drawbar



Deficiencies

Deficiencies: Deficient Components/Systems
Include but are not limited to: Engine Section

DISCLAIMER

General

The Detailed Equipment Information is limited in scope, and Ritchie Bros. Auctioneers has not inspected any aspects or components of the equipment other than those expressly set forth herein. Unless expressly stated, we make no representations or warranties, express or implied, concerning the equipment or its components, including without limitation any representations or warranties concerning functionality, conformity or compliance with any safety standard or requirement of any applicable authority or regulatory body, fitness for any particular purpose, or merchantability. You are strongly advised to perform your own detailed inspection of the equipment prior to bidding.

Functions

Equipment is not tested under load. We make no representation or warranty that equipment is operating in accordance with manufacturers' specifications. No inspection has been performed with respect to any functionality aspect other than those expressly included herein. Only select photos have been provided for individual undercarriage components, and may not be indicative of the condition of the entire undercarriage as a whole.

Dimensions

Measurements are given as an estimate only. Actual loaded dimensions may vary based on truck/trailer height and the loaded machine configuration/position. It is the buyer's responsibility to measure all loads before leaving our auction site to ensure the load is safe for transport. All measurements should be verified by the buyer. DO NOT rely on these measurements for transportation purposes