



DEKRA Services Inc.
Customer Service 770-257-0107

BUS

INSP DATE | VIN (LAST 8) | PO NUMBER
04/20/2021 | H3049515 |

INSPECTOR: 5449
INSPECTION ID
139740

Year 2017 Make VAN HOOL
Model CX45 VIN YE2XC81B6H3049515

SPECIFICATION WORKSHEET

Interior Options	
Interior Color:	BLUE

Steering Options	
Power Steering?:	Yes

Engine Options A	
Eng Make:	DETROIT
Eng Model:	DD13
Eng Serial:	471941S0462944
Eng HP:	450
Cruise:	Yes
Clean air idle:	No

Overall Condition	
Overall Length:	45
Overall Height:	11'6"
Overall Width:	102

Engine Options B	
Odometer:	716400
Hub odometer:	
ECU HP:	450.58
ECU Miles:	592978
Eng Hours:	3690

Miscellaneous	
Seating Capacity:	56
Electronic Engine Controls:	Yes
Full Gauge Package:	Yes
Wraparound Dash:	Yes
Power Mirrors:	Yes
Tilt / Telescopic Steering Wheel:	Yes
AirRide Driver's Seat:	Yes
Restroom:	Yes
PA System:	Yes
Audio - Video System:	Yes
Number of Video Monitors:	4
Multi-Disc CD Changer:	Yes
Individual multi-Channel Audio System:	No
Global Positioning System:	Yes
In Motion Satellite TV System:	Yes
Road Viewing Monitor System:	Yes
Wheelchair Lift:	Yes
Underfloor Storage with Lift:	No
Parcel Rack Storage with Lift:	No
Traction Control:	Yes
Power Windshield Sun Visors:	Yes
Tour Guide Seat:	No
Other:	
Was Unit driven In ?:	Yes
Did Unit need to be jump started ?:	Yes
Was Unit towed in ?:	No
Did Unit start and run ?:	Yes
Unit Condition:	GOOD
If Unit is not driveable or will not start, Explain:	
Any extra options or features not listed on front page and any additional comments:	

Engine Options C	
Eng Brake:	DRIVELINE
Fuel:	DIESEL
FT1 Capac (Gal):	216

Exterior Options A	
Air Horns:	SINGLE
Mirrors:	HEATED DUAL POWER
Exterior Color:	WHITE

Axle / Susp Options	
WheelBase (In):	306
Rear Ratio:	NA
F Axle (lbs):	17640
R Axle (lbs):	27575
GVWR (lbs):	54,000
Suspension:	AIR RIDE
Tag Axle Capacity:	17,640
Rear Axle Model:	N.A
Independent Front Suspension:	Yes
Full Coach Raise and Lowering Susp.:	Yes
Tag Axle Unloading System:	Yes
Front Susp. Kneeling System:	Yes

Transmission Options	
Trans Make:	ALLISON
Trans Model:	B500
Trans Speed:	6



DEKRA Services Inc.
Customer Service 770-257-0107

BUS

INSP DATE | VIN (LAST 8) | PO NUMBER
04/20/2021 | H3049515 |

INSPECTOR: 5449
INSPECTION ID
139740

Brakes Options

ABS:	YES
HYD:	NO
AIR:	YES
DISK:	YES
DRUM:	NO
Brake Plates:	FRONT N / REAR N

Brakes











Drive Axle Brakes:	(1)
	(2)
	(3)
	(4)
	(5)

Tires [Front]

Size:	315/80 R22.5
Wheels:	ALUMINUM
Detail:	

Tires [Rear]

Size:	315/80 R22.5
Wheels:	ALUMINUM
Detail:	

	STEER AXLE	DRIVE AXLE #1	DRIVE AXLE #2
		15 / 32nd HIGHWAY / V	14 / 32nd /
RIGHT	16 / 32nd HIGHWAY / V 	 	 
FRONT		16 / 32nd HIGHWAY / V	/ 32nd /
		13 / 32nd HIGHWAY / V	/ 32nd /
LEFT	 15 / 32nd HIGHWAY / V	 	 
		14 / 32nd HIGHWAY / V	11 / 32nd /

Brake Legend

BD = DRUM HAS MORE THAN 1/16 INCH LIP
CL = CRACKED LINING
LS = LEAKING SEAL(S)

Tire Legend

C = CUT D = DRY ROT F = FLAT
M = MISMATCHED TIRES/CASING
MA = MISMATCHED AXLES (FRONT vs.
REAR)
V = VIRGIN W = IRREGULAR WEAR
R = RECAP: 1 = ONCE, 2 = TWICE, 3 = 3 TIMES

Tread Legend

H = HIGHWAY L = LUG



DEKRA Services Inc.
Customer Service 770-257-0107

BUS

INSPECTOR: 5449
INSPECTION ID
139740

INSP DATE	VIN (LAST 8)	PO NUMBER
04/20/2021	H3049515	

CONDITION REPORT

Engine Compartment Area	COMMENTS
Operational Test	COMMENTS
In Cab Inspection	COMMENTS
Outside Inspection	COMMENTS
Under Vehicle Inspection	COMMENTS
Tires/Wheels/Brakes	COMMENTS

Additional Services	Requested	Status	Comments
---------------------	-----------	--------	----------



DEKRA Services Inc.
Customer Service 770-257-0107

BUS

INSPECTOR: 5449
INSPECTION ID
139740

INSP DATE	VIN (LAST 8)	PO NUMBER
04/20/2021	H3049515	

RECONDITIONING AND SUPPLEMENTAL ESTIMATE

ITEM	DESCRIPTION / COMMENTS
FRONT BUMPER	
L/S FRONT PANEL DOOR	MOLDING
ACTIVE AND INACTIVE CODES	
CHECK ENGINE LIGHT ON	
STOP ENGINE LIGHT ON	DIAG ONLY
ODO AND ECM MILES HAVE OVER 100K DIFFERENCE	

COMMENTS:
HAS WHEEL CHAIR COMPARTMENT BUT NO WHEEL CHAIR LIFT INSTALLED

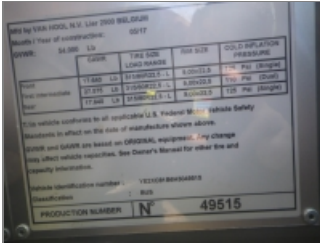


DEKRA Services Inc.
Customer Service 770-257-0107

BUS

INSP DATE | VIN (LAST 8) | PO NUMBER
04/20/2021 | H3049515

INSPECTOR: 5449
INSPECTION ID
139740



VIN



DASH W/ STEERING WHEEL



LEFT SIDE



FRONT LEFT CORNER



FRONT OF BUS



FRONT RIGHT CORNER



RIGHT SIDE



REAR RIGHT CORNER



RIGHT REAR TIRES



REAR OF BUS



REAR LEFT CORNER



LEFT REAR TIRES



ENTRY WAY STEPS AT FRONT
DOOR



COMPLETE DRIVERS SEAT



ODOMETER



DASH HOUR METER



DEKRA Services Inc.
Customer Service 770-257-0107

BUS

INSP DATE | VIN (LAST 8) | PO NUMBER
04/20/2021 | H3049515

INSPECTOR: 5449
INSPECTION ID
139740



INSIDE OF BUS, FRONT TO BACK



FLOOR OF BUS, FRONT TO BACK



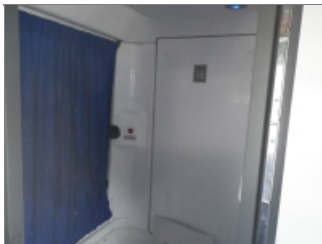
INSIDE OF BUS, BACK TO FRONT



FLOOR OF BUS, BACK TO FRONT



INSIDE RESTROOM #1



INSIDE RESTROOM #2



SEATS



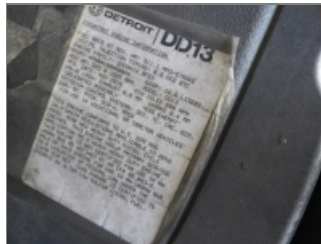
LEFT STEER TIRE



RIGHT STEER TIRE



ENGINE COMPARTMENT



ENGINE FAMILY NUMBER



ENGINE COMPARTMENT
RIGHT SIDE



ENGINE COMPARTMENT LEFT
SIDE



INSIDE STORAGE
COMPARTMENTS



OIL LEAKS



ADDITIONAL 1



DEKRA Services Inc.
Customer Service 770-257-0107

BUS

INSP DATE | VIN (LAST 8) | PO NUMBER
04/20/2021 | H3049515 |

INSPECTOR: 5449
INSPECTION ID
139740



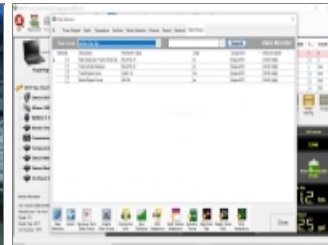
ADDITIONAL 2



ADDITIONAL 3



ADDITIONAL 4



ADDITIONAL 5



ADDITIONAL 6



ADDITIONAL 7



ADDITIONAL 8



ADDITIONAL 9