



DEKRA Services Inc.
Customer Service 770-257-0107

BUS

INSPECTOR: 5761
INSPECTION ID
132964

INSP DATE	UNIT NUMBER	VIN (LAST 8)	PO NUMBER
12/03/2020	339	GW067370	

Year	2016	Make	MCI
Model	J4500	VIN	2MG3JM8A6GW067370

SPECIFICATION WORKSHEET

Interior Options	
Interior Color:	GREY

Steering Options	
Power Steering?:	Yes

Engine Options A	
Eng Make:	CUMMINS
Eng Model:	X12
Eng Serial:	N/A
Eng HP:	410
Cruise:	Yes
Clean air idle:	Yes

Overall Condition	
Overall Length:	45.58
Overall Height:	140.75
Overall Width:	102

Engine Options B	
Odometer:	184213
Hub odometer:	
ECU HP:	
ECU Miles:	
Eng Hours:	N/A

Engine Options C	
Eng Brake:	JAKE
Fuel:	DIESEL
FT1 Capac (Gal):	183

Exterior Options A	
Air Horns:	SINGLE
Mirrors:	DUAL POWER
Exterior Color:	WHITE/BLACK

Axle / Susp Options	
WheelBase (In):	315
Rear Ratio:	
F Axle (lbs):	16500
R Axle (lbs):	23000
GVWR (lbs):	54000
Suspension:	AIR RIDE
Tag Axle Capacity:	16500
Rear Axle Model:	
Independent Front Suspension:	Yes
Full Coach Raise and Lowering Susp.:	Yes
Tag Axle Unloading System:	Yes
Front Susp. Kneeling System:	Yes

Transmission Options	
Trans Make:	ALLISON
Trans Model:	GEN V
Trans Speed:	10

Miscellaneous	
Seating Capacity:	56
Electronic Engine Controls:	Yes
Full Gauge Package:	Yes
Wraparound Dash:	Yes
Power Mirrors:	Yes
Tilt / Telescopic Steering Wheel:	Yes
AirRide Driver's Seat:	Yes
Restroom:	Yes
PA System:	Yes
Audio - Video System:	Yes
Number of Video Monitors:	2
Multi-Disc CD Changer:	Yes
Individual multi-Channel Audio System:	Yes
Global Positioning System:	No
In Motion Satellite TV System:	No
Road Viewing Monitor System:	Yes
Wheelchair Lift:	No
Underfloor Storage with Lift:	No
Parcel Rack Storage with Lift:	No
Traction Control:	Yes
Power Windshield Sun Visors:	Yes
Tour Guide Seat:	No
Other:	
Was Unit driven In ?:	Yes
Did Unit need to be jump started ?:	No
Was Unit towed in ?:	No
Did Unit start and run ?:	Yes
Unit Condition:	
If Unit is not driveable or will not start, Explain:	
Any extra options or features not listed on front page and any additional comments:	



DEKRA Services Inc.
Customer Service 770-257-0107

BUS

INSPECTOR: 5761
INSPECTION ID
132964

INSP DATE	UNIT NUMBER	VIN (LAST 8)	PO NUMBER
12/03/2020	339	GW067370	

Brakes Options

ABS:	YES
HYD:	NO
AIR:	YES
DISK:	YES
DRUM:	NO
Brake Plates:	FRONT N / REAR N

Brakes







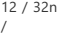




Steer Axle Brakes:	70%	70%	(1)
Drive Axle Brakes:	70%	70%	(2)
	70%	70%	(3)
			(4)
			(5)
			(6)

Tires [Front]

Size:	315/80 R22.5
Wheels:	ALUMINUM
Detail:	

Tires [Rear]

Size:	315/80 R22.5
Wheels:	ALUMINUM
Detail:	

	STEER AXLE	DRIVE AXLE #1	DRIVE AXLE #2
		11 / 32nd HIGHWAY / V	11 / 32nd HIGHWAY / V
RIGHT	12 / 32nd / 	 	 
FRONT		11 / 32nd HIGHWAY / V	11 / 32nd HIGHWAY / V
		11 / 32nd HIGHWAY / V	11 / 32nd HIGHWAY / V
LEFT	 12 / 32nd / 	 	 
		11 / 32nd HIGHWAY / V	11 / 32nd HIGHWAY / V

Brake Legend

BD = DRUM HAS MORE THAN 1/16 INCH LIP
CL = CRACKED LINING
LS = LEAKING SEAL(S)

Tire Legend

C = CUT D = DRY ROT F = FLAT
M = MISMATCHED TIRES/CASING
MA = MISMATCHED AXLES (FRONT vs.
REAR)
V = VIRGIN W = IRREGULAR WEAR
R = RECAP: 1 = ONCE, 2 = TWICE, 3 = 3 TIMES

Tread Legend

H = HIGHWAY L = LUG



DEKRA Services Inc.
Customer Service 770-257-0107

BUS

INSPECTOR: 5761
INSPECTION ID
132964

INSP DATE	UNIT NUMBER	VIN (LAST 8)	PO NUMBER
12/03/2020	339	GW067370	

CONDITION REPORT

	Engine Compartment Area	COMMENTS	
	Operational Test	COMMENTS	
	In Cab Inspection	COMMENTS	
	Outside Inspection	COMMENTS	
	Under Vehicle Inspection	COMMENTS	
	Tires/Wheels/Brakes	COMMENTS	
Additional Services	Requested	Status	Comments

COMMENTS:
UNIT OBSERVED IN GOOD OVERALL USED CONDITION. UNIT STARTS AND OPERATES PROPERLY. RAN THROUGH GAUGES BUT COULD NOT LOCATE HOURS METER. CHECKED ALL FLUIDS AT PROPER LEVELS. NO ENGINE FAMILY PLATE LOCATED. TIRES AND WHEELS IN GOOD CONDITION. COULD NOT CHECK BRAKES IN THIS POSITION. NO LEAKS NOTED TO UNDERCARRIAGE OR ENGINE COMPARTMENT. NO EXTERIOR BODY DAMAGE NOTED. NO INTERIOR DAMAGE NOTED. NO OTHER CONCERNS.

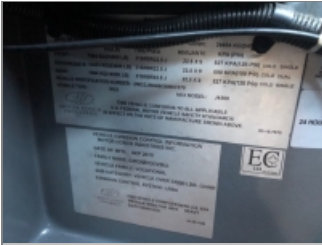


DEKRA Services Inc.
Customer Service 770-257-0107

BUS

INSP DATE	UNIT NUMBER	VIN (LAST 8)	PO NUMBER
12/03/2020	339	GW067370	

INSPECTOR: 5761
INSPECTION ID
132964



VIN



DASH W/ STEERING WHEEL



FRONT LEFT CORNER



FRONT OF BUS



FRONT RIGHT CORNER



REAR RIGHT CORNER



RIGHT REAR TIRES



REAR LEFT CORNER



LEFT REAR TIRES



ENTRY WAY STEPS AT FRONT
DOOR



COMPLETE DRIVERS SEAT



ODOMETER



INSIDE OF BUS, FRONT TO
BACK



FLOOR OF BUS, FRONT TO
BACK



INSIDE OF BUS, BACK TO
FRONT



FLOOR OF BUS, BACK TO
FRONT



DEKRA Services Inc.
Customer Service 770-257-0107

BUS

INSP DATE	UNIT NUMBER	VIN (LAST 8)	PO NUMBER
12/03/2020	339	GW067370	

INSPECTOR: 5761
INSPECTION ID
132964



INSIDE RESTROOM #1



INSIDE RESTROOM #2



SEATS



LEFT STEER TIRE



RIGHT STEER TIRE



ENGINE COMPARTMENT



ENGINE COMPARTMENT
RIGHT SIDE



ENGINE COMPARTMENT LEFT
SIDE



ADDITIONAL 1



ADDITIONAL 2



ADDITIONAL 3



ADDITIONAL 4



ADDITIONAL 5



ADDITIONAL 6



ADDITIONAL 7



ADDITIONAL 8



DEKRA Services Inc.
Customer Service 770-257-0107

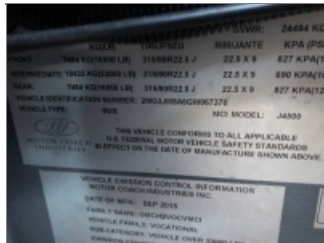
BUS

INSPECTOR: 5761
INSPECTION ID
132964

INSP DATE	UNIT NUMBER	VIN (LAST 8)	PO NUMBER
12/03/2020	339	GW067370	



ADDITIONAL 9



ADDITIONAL 10



ADDITIONAL 11



ADDITIONAL 12



ADDITIONAL 13