



DEKRA Services Inc.
Customer Service 770-257-0107

BUS

INSPECTOR: 5932
 INSPECTION ID
 134038

INSP DATE | VIN (LAST 8) | PO NUMBER
 12/14/2020 | H2041504 |

Year: 2017 Make: VAN HOOL
 Model: TX45 VIN: YE2YC82B4H2041504

SPECIFICATION WORKSHEET

Interior Options	
Interior Color:	blue

Steering Options	
Power Steering?:	Yes

Engine Options A	
Eng Make:	CUMMINS
Eng Model:	isx
Eng Serial:	75055495
Eng HP:	450
Cruise:	Yes
Clean air idle:	Yes

Overall Condition	
Overall Length:	45'
Overall Height:	12'
Overall Width:	102"

Engine Options B	
Odometer:	148397
Hub odometer:	na
ECU HP:	500
ECU Miles:	147623
Eng Hours:	6540

Miscellaneous	
Seating Capacity:	57
Electronic Engine Controls:	Yes
Full Gauge Package:	Yes
Wraparound Dash:	Yes
Power Mirrors:	Yes
Tilt / Telescopic Steering Wheel:	Yes
AirRide Driver's Seat:	Yes
Restroom:	Yes
PA System:	Yes
Audio - Video System:	Yes
Number of Video Monitors:	4
Multi-Disc CD Changer:	Yes
Individual multi-Channel Audio System:	No
Global Positioning System:	Yes
In Motion Satellite TV System:	No
Road Viewing Monitor System:	Yes
Wheelchair Lift:	No
Underfloor Storage with Lift:	No
Parcel Rack Storage with Lift:	No
Traction Control:	Yes
Power Windshield Sun Visors:	Yes
Tour Guide Seat:	Yes
Other:	NA
Was Unit driven In ?:	Yes
Did Unit need to be jump started ?:	No
Was Unit towed in ?:	No
Did Unit start and run ?:	Yes
Unit Condition:	GOOD
If Unit is not driveable or will not start, Explain:	NA
Any extra options or features not listed on front page and any additional comments: NA	

Engine Options C	
Eng Brake:	JAKE
Fuel:	GAS
FT1 Capac (Gal):	216

Exterior Options A	
Air Horns:	NONE
Mirrors:	DUAL POWER
Exterior Color:	white

Axle / Susp Options	
WheelBase (In):	24'6"
Rear Ratio:	3.42
F Axle (lbs):	17,600
R Axle (lbs):	17,600
GVWR (lbs):	54,000
Suspension:	AIR RIDE
Tag Axle Capacity:	27,500
Rear Axle Model:	NA
Independent Front Suspension:	Yes
Full Coach Raise and Lowering Susp.:	Yes
Tag Axle Unloading System:	Yes
Front Susp. Kneeling System:	Yes

Transmission Options	
Trans Make:	ALLISON
Trans Model:	3000/4000 5TH GEN
Trans Speed:	6



DEKRA Services Inc.
Customer Service 770-257-0107

BUS

INSPECTOR: 5932
 INSPECTION ID
 134038









INSP DATE | VIN (LAST 8) | PO NUMBER
 12/14/2020 | H2041504 |

Brakes Options	
ABS:	YES
HYD:	NO
AIR:	YES
DISK:	YES
DRUM:	NO
Brake Plates:	FRONT N / REAR N

Brakes			
Steer Axle Brakes:	60%	60%	(1)
Drive Axle Brakes:	60%	60%	(2)
	60%	60%	(3)
			(4)
			(5)
			(6)

Tires [Front]	
Size:	315/80 R22.5
Wheels:	ALUMINUM
Detail:	

Tires [Rear]	
Size:	315/80 R22.5
Wheels:	ALUMINUM
Detail:	

	STEER AXLE	DRIVE AXLE #1	DRIVE AXLE #2
		17 / 32nd LUG / R1	12 / 32nd LUG / R1
RIGHT	9 / 32nd HIGHWAY / V 	 	 
FRONT		15 / 32nd LUG / R1	/ 32nd /
LEFT	 11 / 32nd HIGHWAY / V	9 / 32nd LUG / R1 	/ 32nd / 
		11 / 32nd LUG / R1	3 / 32nd LUG / R1

Brake Legend
BD = DRUM HAS MORE THAN 1/16 INCH LIP CL = CRACKED LINING LS = LEAKING SEAL(S)
Tire Legend
C = CUT D = DRY ROT F = FLAT M = MISMATCHED TIRES/CASING MA = MISMATCHED AXLES (FRONT vs. REAR) V = VIRGIN W = IRREGULAR WEAR R = RECAP: 1 = ONCE, 2 = TWICE, 3 = 3 TIMES
Tread Legend
H = HIGHWAY L = LUG



DEKRA Services Inc.
Customer Service 770-257-0107

BUS

INSPECTOR: 5932
 INSPECTION ID
 134038

INSP DATE	VIN (LAST 8)	PO NUMBER
12/14/2020	H2041504	

CONDITION REPORT

Engine Compartment Area		COMMENTS
Operational Test		COMMENTS
In Cab Inspection		COMMENTS
Outside Inspection		COMMENTS
X	Paint Condition & Physical Damage	BODY DAMAGE
Under Vehicle Inspection		COMMENTS
Tires/Wheels/Brakes		COMMENTS
X	Tires/Wheels	3 tires below 10/32

Additional Services	Requested	Status	Comments



DEKRA Services Inc.
Customer Service 770-257-0107

BUS

INSPECTOR: 5932
INSPECTION ID
134038

INSP DATE | **VIN (LAST 8)** | **PO NUMBER**
12/14/2020 | H2041504 |

RECONDITIONING AND SUPPLEMENTAL ESTIMATE

ITEM	DESCRIPTION / COMMENTS
Tires/Wheels	X 3 tires below 10/32
Paint Condition & Physical Damage	X BODY DAMAGE
FRONT PANEL	DAMAGED
RIGHT SIDE # 1 CARGO DOOR	DAMAGED
RIGHT SIDE # 3 CARGO DOOR	DAMAGED
RIGHT SIDE # 4 CARGO DOOR	DAMAGED
RIGHT SIDE ENGINE DOOR	DAMAGED
LEFT SIDE # 2 CARGO DOOR	DAMAGED
REAR BUMPER	DAMAGED

COMMENTS:
THE BUS WAS INSPECTED AT TCS IN THE CITY OF ORANGE. THE UNIT WAS IN GOOD RUNNING CONDITION. THERE WAS DAMAGE TO THE RIGHT SIDE, LEFT SIDE REAR BUMPER

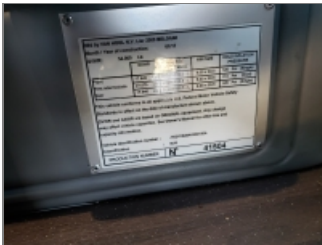


DEKRA Services Inc.
Customer Service 770-257-0107

BUS

INSPECTOR: 5932
INSPECTION ID
134038

INSP DATE | VIN (LAST 8) | PO NUMBER
12/14/2020 | H2041504



VIN



DASH W/ STEERING WHEEL



LEFT SIDE



FRONT LEFT CORNER



FRONT OF BUS



FRONT RIGHT CORNER



RIGHT SIDE



REAR RIGHT CORNER



RIGHT REAR TIRES



REAR OF BUS



REAR LEFT CORNER



LEFT REAR TIRES



ENTRY WAY STEPS AT FRONT
DOOR



COMPLETE DRIVERS SEAT



ODOMETER



INSIDE OF BUS, FRONT TO
BACK



DEKRA Services Inc.
Customer Service 770-257-0107

BUS

INSP DATE | VIN (LAST 8) | PO NUMBER
 12/14/2020 | H2041504 |

INSPECTOR: 5932
 INSPECTION ID
 134038



FLOOR OF BUS, FRONT TO BACK



INSIDE OF BUS, BACK TO FRONT



FLOOR OF BUS, BACK TO FRONT



INSIDE RESTROOM #1



SEATS



LEFT STEER TIRE



RIGHT STEER TIRE



ENGINE COMPARTMENT



ENGINE FAMILY NUMBER



ENGINE COMPARTMENT
RIGHT SIDE



ENGINE COMPARTMENT
LEFT SIDE



INSIDE STORAGE
COMPARTMENTS



DASH HOUR METER



ADDITIONAL 1



ADDITIONAL 2



ADDITIONAL 3



DEKRA Services Inc.
Customer Service 770-257-0107

BUS

INSP DATE | VIN (LAST 8) | PO NUMBER
12/14/2020 | H2041504 |

INSPECTOR: 5932
INSPECTION ID
134038

A screenshot of a JPRO diagnostic report page, labeled 'ADDITIONAL 4'. The page contains a table with multiple columns and rows of data, likely representing test results or component status. The JPRO logo is visible in the top left corner.

ADDITIONAL 4

A screenshot of a JPRO diagnostic report page, labeled 'ADDITIONAL 5'. The page contains a table with multiple columns and rows of data, likely representing test results or component status. The JPRO logo is visible in the top left corner.

ADDITIONAL 5