



DEKRA Services Inc.
Customer Service 770-257-0107

BUS

INSP DATE | VIN (LAST 8) | PO NUMBER
12/14/2020 | H2041506 |

INSPECTOR: 5932
INSPECTION ID
134036

Year | Make | VAN HOOL
Model | TX45 VIN | YE2YC82B8H2041506

SPECIFICATION WORKSHEET

Interior Options	
Interior Color:	BLUE

Steering Options	
Power Steering?:	Yes

Engine Options A	
Eng Make:	CUMMINS
Eng Model:	ISX
Eng Serial:	75055498
Eng HP:	450
Cruise:	Yes
Clean air idle:	Yes

Overall Condition	
Overall Length:	45'
Overall Height:	12'
Overall Width:	102"

Engine Options B	
Odometer:	209010
Hub odometer:	NA
ECU HP:	500
ECU Miles:	207910
Eng Hours:	7460

Miscellaneous	
Seating Capacity:	57
Electronic Engine Controls:	Yes
Full Gauge Package:	Yes
Wraparound Dash:	Yes
Power Mirrors:	Yes
Tilt / Telescopic Steering Wheel:	Yes
AirRide Driver's Seat:	Yes
Restroom:	Yes
PA System:	Yes
Audio - Video System:	Yes
Number of Video Monitors:	4
Multi-Disc CD Changer:	Yes
Individual multi-Channel Audio System:	No
Global Positioning System:	Yes
In Motion Satellite TV System:	No
Road Viewing Monitor System:	Yes
Wheelchair Lift:	No
Underfloor Storage with Lift:	No
Parcel Rack Storage with Lift:	No
Traction Control:	Yes
Power Windshield Sun Visors:	Yes
Tour Guide Seat:	Yes
Other:	NA
Was Unit driven In ?:	Yes
Did Unit need to be jump started ?:	No
Was Unit towed in ?:	No
Did Unit start and run ?:	Yes
Unit Condition:	GOOD
If Unit is not driveable or will not start, Explain:	NA
Any extra options or features not listed on front page and any additional comments:	
NA	

Engine Options C	
Eng Brake:	JAKE
Fuel:	DIESEL
FT1 Capac (Gal):	216

Exterior Options A	
Air Horns:	NONE
Mirrors:	DUAL POWER
Exterior Color:	WHITE

Axle / Susp Options	
WheelBase (In):	24'6"
Rear Ratio:	3.42
F Axle (lbs):	17,600
R Axle (lbs):	17,600
GVWR (lbs):	54,000
Suspension:	AIR RIDE
Tag Axle Capacity:	27,500
Rear Axle Model:	NA
Independent Front Suspension:	Yes
Full Coach Raise and Lowering Susp.:	Yes
Tag Axle Unloading System:	Yes
Front Susp. Kneeling System:	Yes

Transmission Options	
Trans Make:	ALLISON
Trans Model:	3000/4000 5TH GEN
Trans Speed:	6



DEKRA Services Inc.
Customer Service 770-257-0107

BUS

INSP DATE | VIN (LAST 8) | PO NUMBER
12/14/2020 | H2041506 |

INSPECTOR: 5932
INSPECTION ID
134036

Brakes Options

ABS:	YES
HYD:	NO
AIR:	YES
DISK:	YES
DRUM:	NO
Brake Plates:	FRONT N / REAR N

Brakes










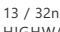
Steer Axle Brakes:	50%	50%	(1)
Drive Axle Brakes:	50%	50%	(2)
	50%	50%	(3)
			(4)
			(5)
			(6)

Tires [Front]

Size:	315/80 R22.5
Wheels:	ALUMINUM
Detail:	

Tires [Rear]

Size:	315/80 R22.5
Wheels:	ALUMINUM
Detail:	

	STEER AXLE	DRIVE AXLE #1	DRIVE AXLE #2
RIGHT		6 / 32nd LUG /	7 / 32nd LUG / R1
	14 / 32nd HIGHWAY / V		
			
FRONT		5 / 32nd LUG /	/ 32nd /
		7 / 32nd LUG /	/ 32nd /
LEFT			
	13 / 32nd HIGHWAY / V		
		6 / 32nd LUG / R1	9 / 32nd LUG / R1

Brake Legend

BD = DRUM HAS MORE THAN 1/16 INCH LIP
CL = CRACKED LINING
LS = LEAKING SEAL(S)

Tire Legend

C = CUT D = DRY ROT F = FLAT
M = MISMATCHED TIRES/CASING
MA = MISMATCHED AXLES (FRONT vs.
REAR)
V = VIRGIN W = IRREGULAR WEAR
R = RECAP: 1 = ONCE, 2 = TWICE, 3 = 3 TIMES

Tread Legend

H = HIGHWAY L = LUG



DEKRA Services Inc.
Customer Service 770-257-0107

BUS

INSP DATE	VIN (LAST 8)	PO NUMBER
12/14/2020	H2041506	

INSPECTOR: 5932
INSPECTION ID
134036

CONDITION REPORT

	Engine Compartment Area	COMMENTS
	Operational Test	COMMENTS
	In Cab Inspection	COMMENTS
X	Windshield, Door & Any Other Glass	LEFT WINDSHIELD CHIP
	Outside Inspection	COMMENTS
X	Paint Condition & Physical Damage	BODY DAMAGE
	Under Vehicle Inspection	COMMENTS
	Tires/Wheels/Brakes	COMMENTS
X	Tires/Wheels	6 tires below 10/32

Additional Services	Requested	Status	Comments
---------------------	-----------	--------	----------



DEKRA Services Inc.
Customer Service 770-257-0107

BUS

INSP DATE	VIN (LAST 8)	PO NUMBER
12/14/2020	H2041506	

INSPECTOR: 5932
INSPECTION ID
134036

RECONDITIONING AND SUPPLEMENTAL ESTIMATE

ITEM	DESCRIPTION / COMMENTS
Tires/Wheels	X 6 tires below 10/32
Windshield, Door & Any Other Glass	X LEFT WINDSHIELD CHIP
Paint Condition & Physical Damage	X BODY DAMAGE
LEFT SIDE VENT DOOR	DAMAGED
LEFT SIDE CENTER PANEL MLDG	DAMAGED

COMMENTS:



DEKRA Services Inc.
Customer Service 770-257-0107

BUS

INSP DATE 12/14/2020 VIN (LAST 8) H2041506 PO NUMBER

INSPECTOR: 5932
INSPECTION ID
134036



VIN



DASH W/ STEERING WHEEL



LEFT SIDE



FRONT LEFT CORNER



FRONT OF BUS



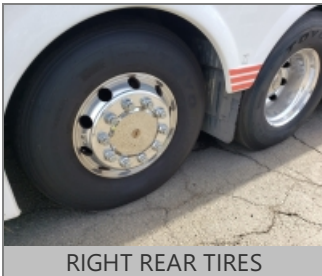
FRONT RIGHT CORNER



RIGHT SIDE



REAR RIGHT CORNER



RIGHT REAR TIRES



REAR OF BUS



REAR LEFT CORNER



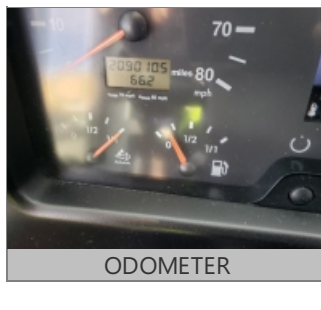
LEFT REAR TIRES



ENTRY WAY STEPS AT FRONT
DOOR



COMPLETE DRIVERS SEAT



ODOMETER



INSIDE OF BUS, FRONT TO
BACK



DEKRA Services Inc.
Customer Service 770-257-0107

BUS

INSP DATE	VIN (LAST 8)	PO NUMBER
12/14/2020	H2041506	

INSPECTOR: 5932
INSPECTION ID
134036



FLOOR OF BUS, FRONT TO BACK



INSIDE OF BUS, BACK TO FRONT



FLOOR OF BUS, BACK TO FRONT



INSIDE RESTROOM #1



SEATS



LEFT STEER TIRE



RIGHT STEER TIRE



ENGINE COMPARTMENT



ENGINE FAMILY NUMBER



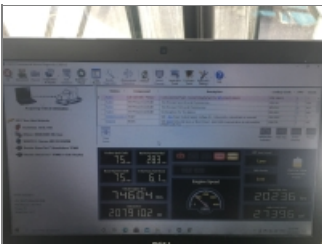
ENGINE COMPARTMENT
RIGHT SIDE



ENGINE COMPARTMENT LEFT
SIDE



INSIDE STORAGE
COMPARTMENTS



DASH HOUR METER



ADDITIONAL 1



ADDITIONAL 2



ADDITIONAL 3



DEKRA Services Inc.
Customer Service 770-257-0107

BUS

INSP DATE | VIN (LAST 8) | PO NUMBER
12/14/2020 | H2041506 |

INSPECTOR: 5932
INSPECTION ID
134036



ADDITIONAL 4



ADDITIONAL 5



ADDITIONAL 6



ADDITIONAL 7



ADDITIONAL 8