

ITEM DETAILS - Kobelco SK260LC

Tuesday, March 03, 2026

DETAILED EQUIPMENT INFORMATION

A qualified Ritchie Bros. employee collected detailed equipment information and performed functional tests on the key components of this asset.

General Appearance

Serial Number / VIN: LL1610536

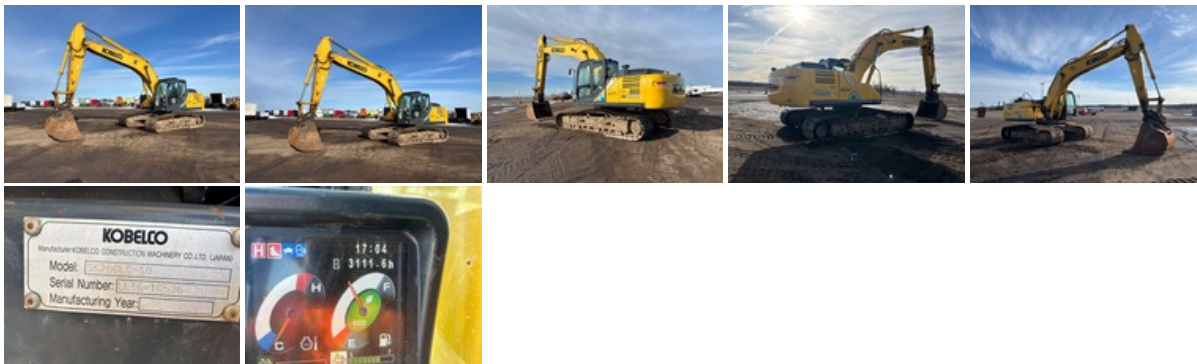
Seller Reference Number: Seller Reference or Fleet Number:

Tires/ Undercarriage: Percentage Rating:

Hour Meter / Odometer: 3111 hrs

Condition: Overall Condition for Age:, Good

Features: Air Conditioner, 2018 US EPA Label, 10 ft Stick, 332 in Triple Grouser Track Shoes, Hydraulic Quick Coupler, 48 in Digging Bucket



Control Station

Control Station: Cab Details:, Air Conditioner

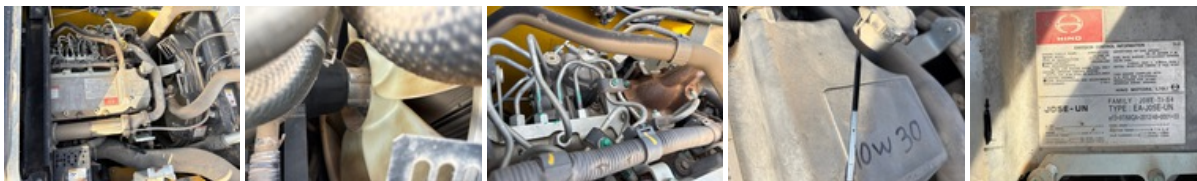
Limited Function Check: The main components are in place and operational as noted.



Engine

Engine: 2018 US EPA Label

Limited Function Check: The engine started and ran.

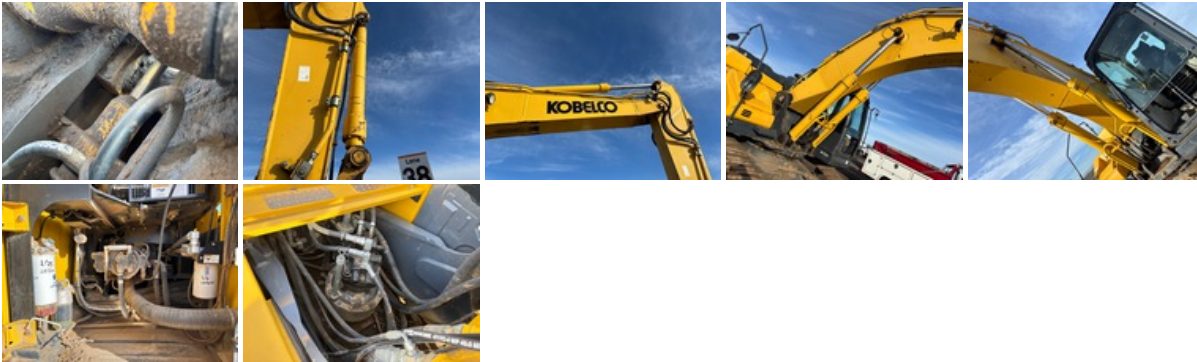


Drivetrain

Limited Function Check: The drivetrain was operational.

Hydraulics

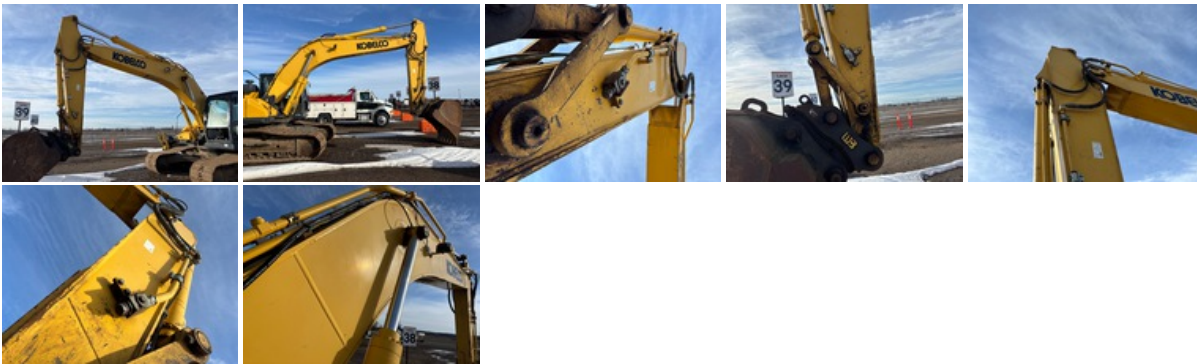
Limited Function Check: The hydraulic system was operational.



Chassis

Boom/Stick Details: 10 ft Stick

Limited Function Check: The main components were operational in a limited check.



Undercarriage

Undercarriage: 332 in Triple Grouser Track Shoes



Specialty

Front Attachment: Hydraulic Quick Coupler, 48 in Digging Bucket



DISCLAIMER

General

The Detailed Equipment Information is limited in scope, and Ritchie Bros. Auctioneers has not inspected any aspects or components of the equipment other than those expressly set forth herein. Unless expressly stated, we make no representations or warranties, express or implied, concerning the equipment or its components, including without limitation any representations or warranties concerning functionality, conformity or compliance with any safety standard or requirement of any applicable authority or regulatory body, fitness for any particular purpose, or merchantability. You are strongly advised to perform your own detailed inspection of the equipment prior to bidding.

Functions

Equipment is not tested under load. We make no representation or warranty that equipment is operating in accordance with manufacturers' specifications. No inspection has been performed with respect to any functionality aspect other than those expressly included herein. Only select photos have been provided for individual undercarriage components, and may not be indicative of the condition of the entire undercarriage as a whole.

Dimensions

Measurements are given as an estimate only. Actual loaded dimensions may vary based on truck/trailer height and the loaded machine configuration/position. It is the buyer's responsibility to measure all loads before leaving our auction site to ensure the load is safe for transport. All measurements should be verified by the buyer. DO NOT rely on these measurements for transportation purposes