

BOBCAT EQUIPMENT CONDITION REPORT

For more information, visit:
wellsfargo.com/equipmentseller



Commerical Vehicle Inspection Group
Truck, Tractor, Trailer, and Equipment
Inspections throughout North America
203-628-4325 info@cvigna.com

Make:	Bobcat	Type:	Skid Steer	Inspector:	RC
Model:	S76	Hours:	1570		
SN:	B4CD15612	Year:	2022	Inspection Date:	4/22/2025

SPECIFICATIONS

ROPS:	Yes	Hours:	1570				
Enclosed Cab:	Yes	Cab Heat:	Yes	Cab A/C:	Yes	Controls:	Standard
Attachment on Machine:	73" Bucket						
Additional Attachments:	N/A						
2-Speed:	Yes	Engine MFR:	BOB CAT		Tires		
High Flow Hydraulics - Sticker:	No	Power Bob-Tach:	Yes			Keyless Start:	Yes
Backup Camera:	Yes	Ride Control:	Yes	Deluxe Instrumentation:	Yes		
Hydraulic X-Change:	No						
Comments and Defects:	MISS MATCH TIRES,BUCKET WORN NEEDS TEETH,,						

BOBCAT EQUIPMENT CONDITION REPORT

For more information, visit:
wellsfargo.com/equipmentseller



Commerical Vehicle Inspection Group
Truck, Tractor, Trailer, and Equipment
Inspections throughout North America
203-628-4325 info@cvigna.com

Tire Fault Legend			
C - Cut	D - Dry	F - Flat	M - Mismatched Tread / Casings
WD - Wheel Damage			

FRONT AXLE		
Make: SOLIDEAL		Make: DOUBLE COIN
Part #: 13		Part #: 141A5
Measure: 13 / 32		Measure: 8 / 32
Condition: GOOD		Condition: POOR
Tread Remaining: Over 50%		Tread Remaining: Under 50%
Fault:		Fault:

REAR AXLE		
Make: DOUBLE COIN		Make: DOUBLE COIN
Part #: 141A5		Part #: 141A5
Measure: 14 / 32		Measure: 14 / 32
Condition: GOOD		Condition: FAIR
Tread Remaining: Over 50%		Tread Remaining: Over 50%
Fault:		Fault:

BOBCAT EQUIPMENT CONDITION REPORT

For more information, visit:
wellsfargo.com/equipmentseller



Commerical Vehicle Inspection Group
Truck, Tractor, Trailer, and Equipment
Inspections throughout North America
203-628-4325 info@cvigna.com

CONDITION REPORT

	Check	Comments / Deficiencies
✓	Visual Inspection	CLEAN
✓	Operational Test	PASSED - MOVED FORWARD/BACK WARD - LIFTED UP AND DOWN
✓	Lift Cylinders	NO LEAKS
✓	Tilt Cylinders	NO LEAKS
✓	Boom Arms Operations	WORKING
✓	Seat	GOOD CONDITION
✓	Tailgate Lights	GOOD CONDITION
X	Working Lights	NON OPERATIONAL LEFT FRONT OUT
✓	Front Door	NO DAMAGES
✓	Rear and Top Window	NO DAMAGES
✓	Side Glass Complete	NO DAMAGES
✓	Boom Arms Damages	NO DAMAGES
✓	Rear Door	OPENS AND CLOSES AND STAYS CLOSED
✓	Mufflers	GOOD CONDITION
✓	ROPS Condition	GOOD CONDITION
✓	Power Bob-Tach Condition	OPERATIONAL
✓	Cab A-C Condition	WORKING
✓	Cab Heat Condition	WORKING
✓	Intake Screen	GOOD CONDITION
✓	Eng. Compartment	
N/A	Hydraulic X-Change Condition	
✓	Customer Decals Visible on Unit	NO
✓	Error Codes	
X	Front Right Tire Depth Percentage	FRONT RIGHT TIRE UNDER 50%

PHOTOS



Front Left



Front Right



Rear



Seating / Interior

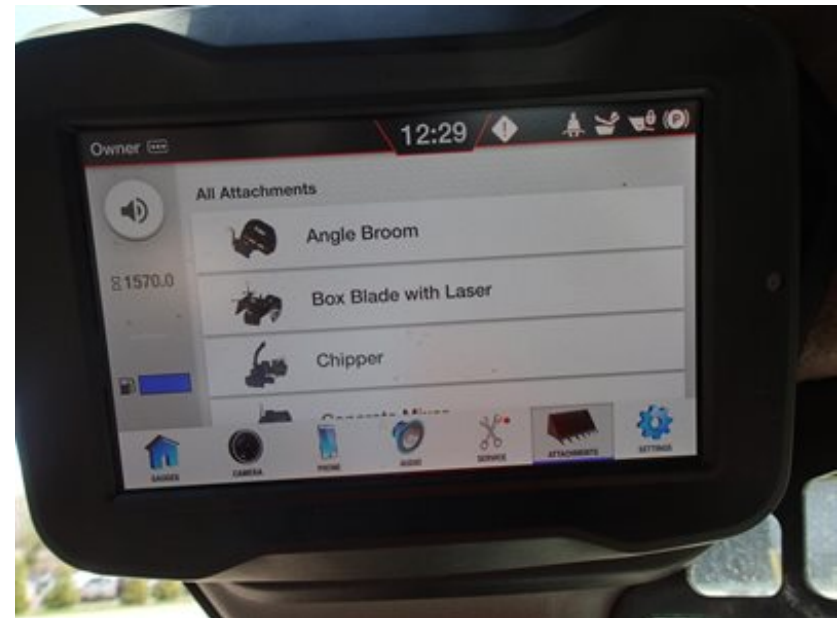
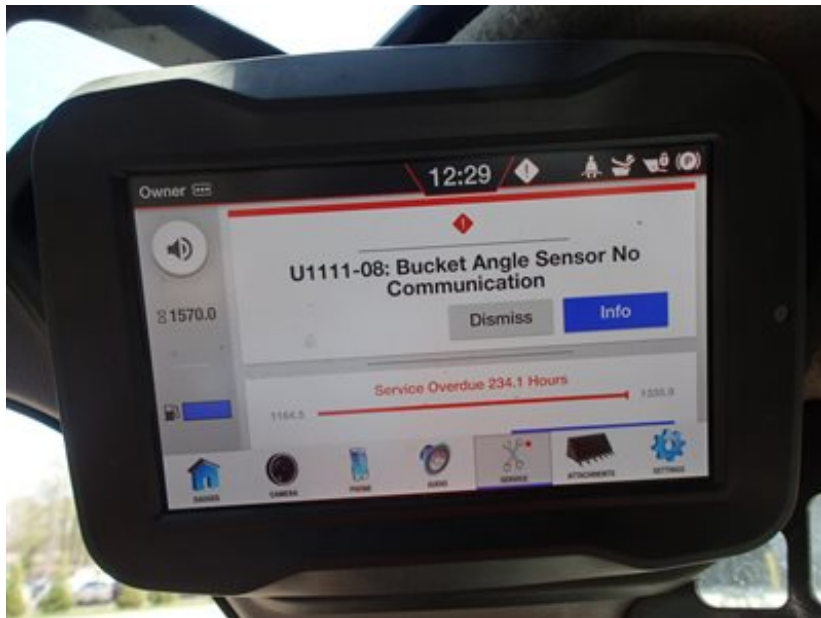
PHOTOS



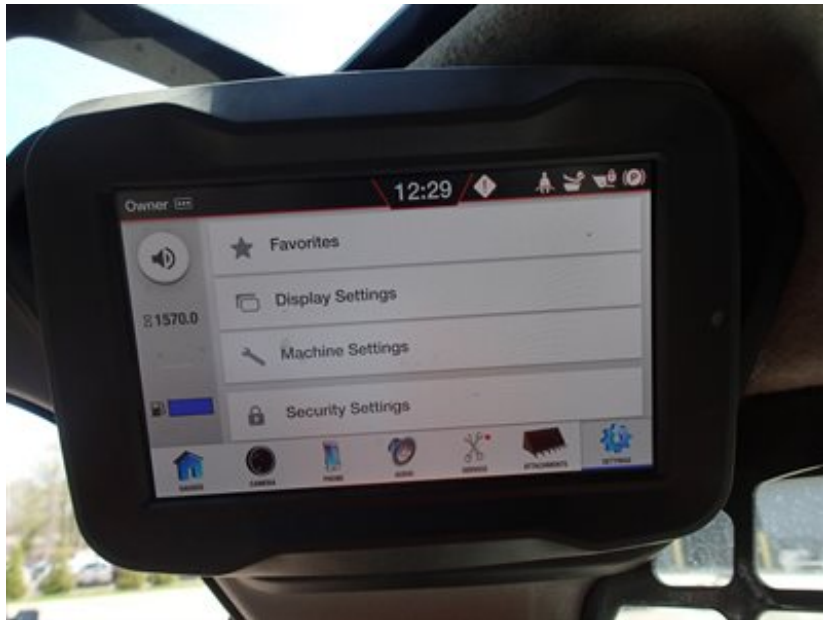
PHOTOS



PHOTOS



PHOTOS



PHOTOS



PHOTOS



PHOTOS



PHOTOS



PHOTOS



PHOTOS



PHOTOS



PHOTOS



PHOTOS

