

## ITEM DETAILS - Grove GRT650

Monday, July 15, 2024

### DETAILED EQUIPMENT INFORMATION

A qualified Ritchie Bros. employee collected detailed equipment information and performed functional tests on the key components of this asset.

#### General Appearance

Serial Number / VIN: 236229

Serial Number Location: In cab on R side floor

Seller Reference Number: Seller Reference or Fleet Number:

Tires/ Undercarriage: Percentage Rating:, 75

Hour Meter / Odometer: 6410 hrs

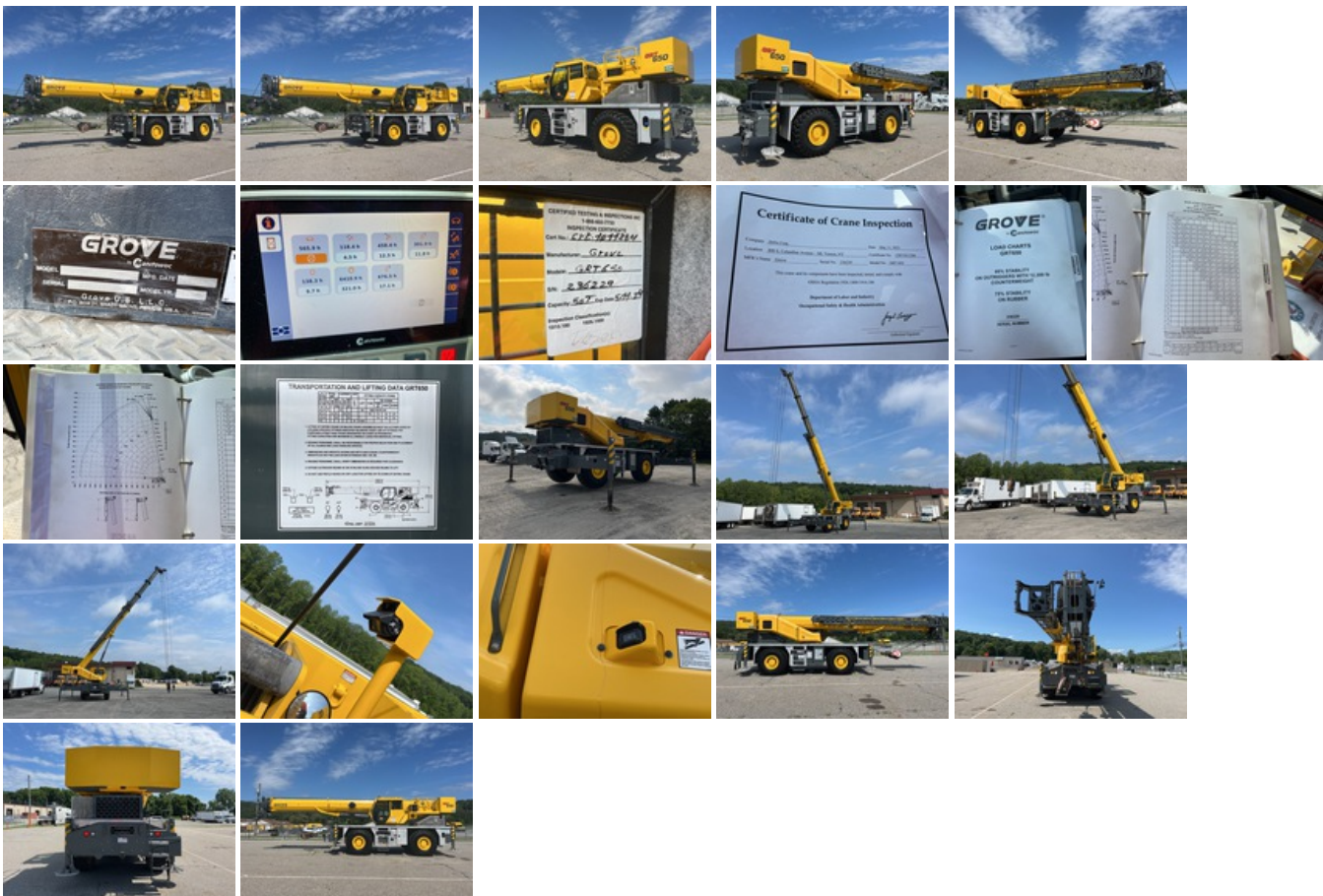
Condition: Overall Condition for Age:, Very Good

**Safety Certification Label:** There is a safety certification label with a date of 5/11/24

**Safety Certification Report:** Safety Certification Report Available

**Load Chart:** Yes

**Features:** Air Conditioner, Drum Camera, Tilt Cab, Anti Two-Block, Manitowoc Load Moment Indicator, 565 hrs Crane Operation, 2019 US EPA Label, CARB Compliant, Cummins QSB6.7 6 Cylinder 164 hp 6.7 L Diesel Engine, Requires Diesel Exhaust Fluid, 35 ft Minimum 114 ft Maximum Boom Length, Rooster Sheave, 26 ft to 45 ft Extendable Swingaway Offset Jib, 860 lb 35 ton Capacity Manitowoc 4 Sheave Hook Block, 364 lb 8 ton Capacity Overhaul Ball, 12480 lb Counterweight



#### Model Description

Model Description: 50 ton

Drive Type: 4x4x4

#### Upper Control Station

**Control Station:** Air Conditioner, Drum Camera, Tilt Cab, Anti Two-Block, Manitowoc Load Moment Indicator  
**Hours of Crane Operation:** 565 hrs Crane Operation



**Cab**  
**Limited Function Check:** The main components are in place and operational as noted.



**Engine**  
**Emissions Status:** 2019 US EPA Label, CARB Compliant

**Engine:** Cummins QSB6.7 6 Cylinder 164 hp 6.7 L Diesel Engine, Requires Diesel Exhaust Fluid  
**Limited Function Check:** The engine started and ran.



---

## Drivetrain

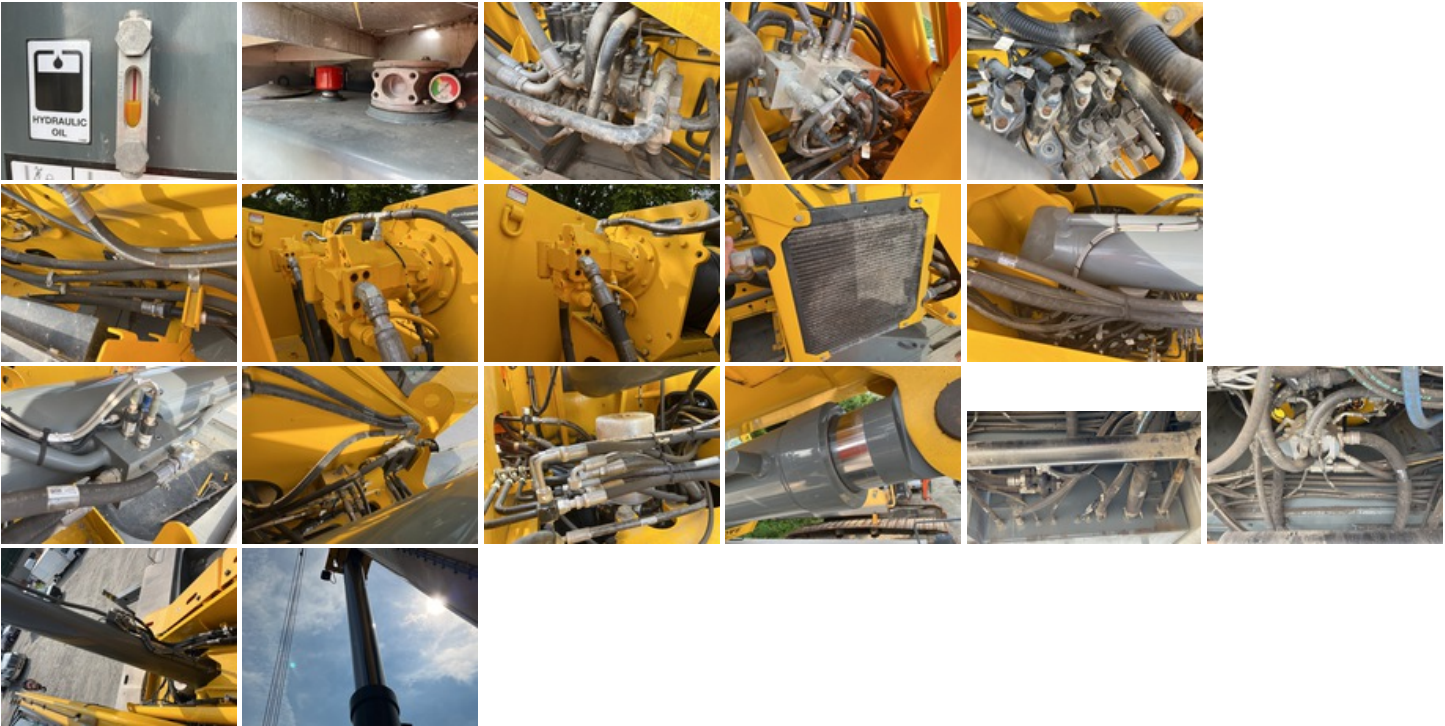
Limited Function Check: The drivetrain was operational without a load.



---

## Hydraulics

Limited Function Check: The hydraulic system was operational.

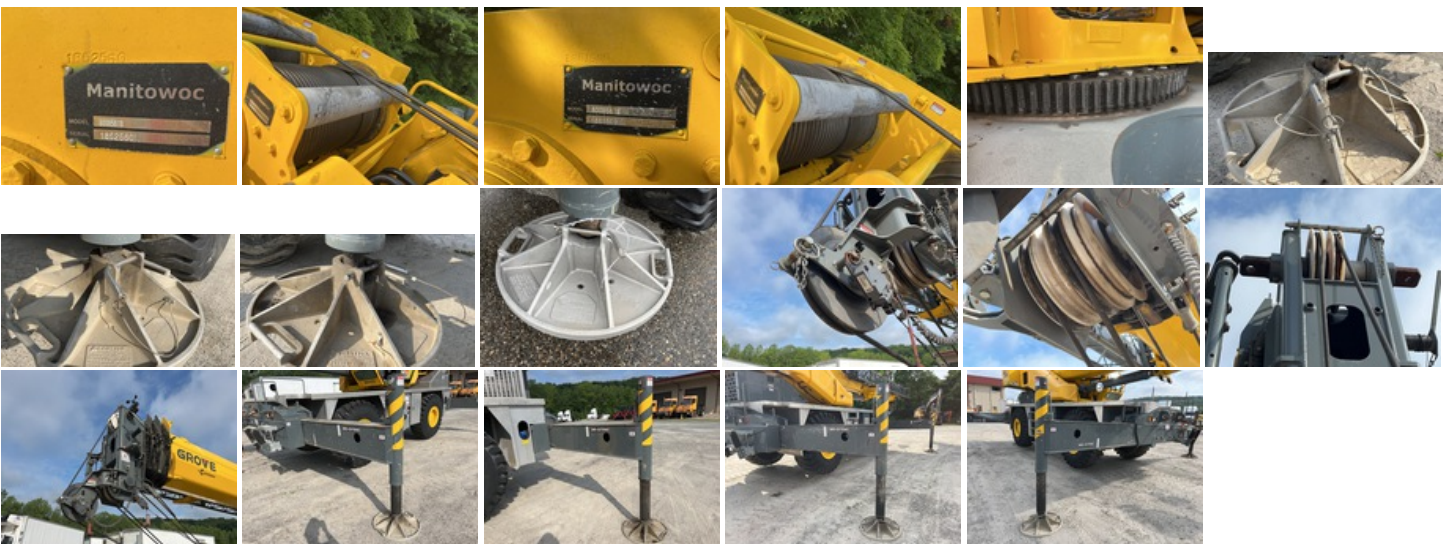


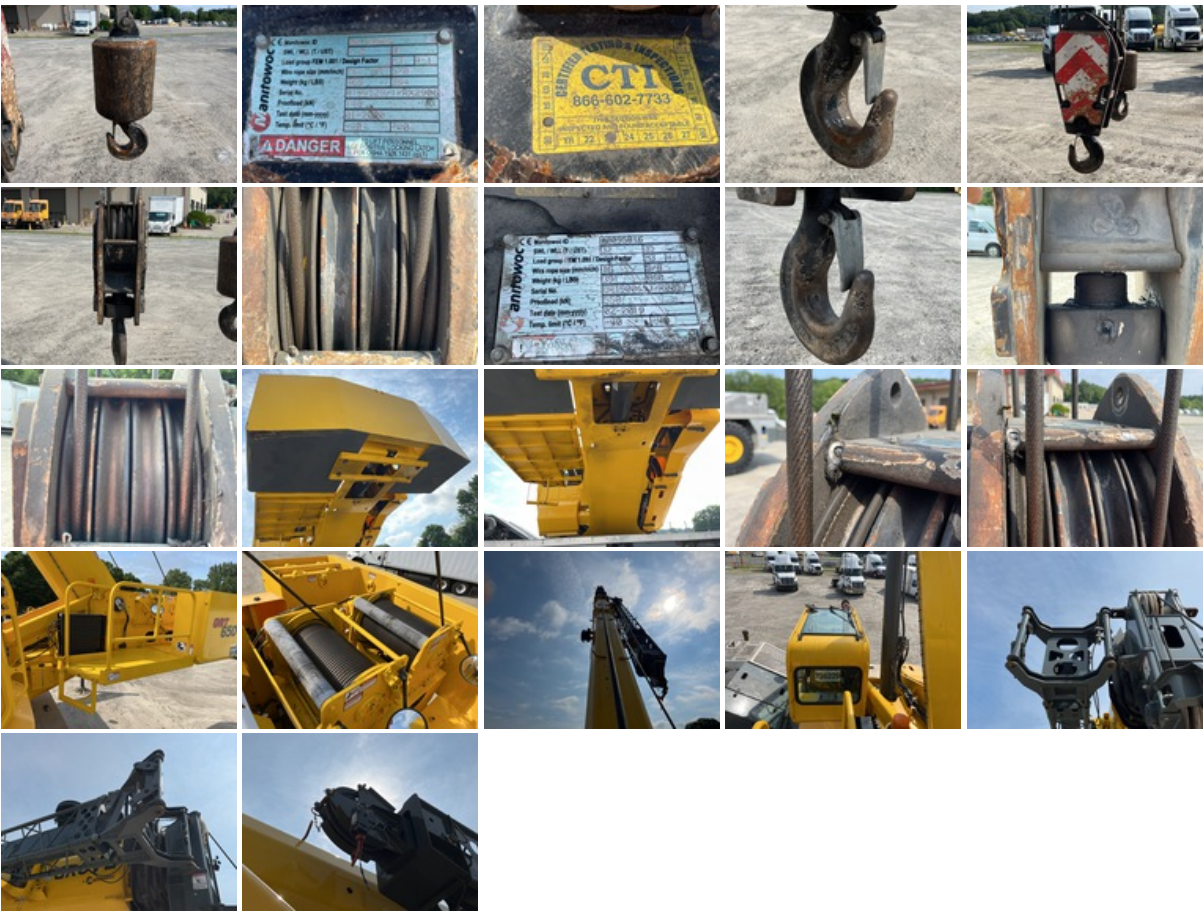
---

## Chassis

**Boom Details:** 35 ft Minimum 114 ft Maximum Boom Length, Rooster Sheave, 26 ft to 45 ft Extendable Swingaway Offset Jib, 860 lb 35 ton Capacity Other Manitowoc 4 Sheave Hook Block, 364 lb 8 ton Capacity Overhaul Ball

**Counterweight:** 12480 lb Counterweight





**Undercarriage**



**Logistics Information**

Shipping Dimensions: 41 ft 6 in Long x 11 ft 5 in Wide x 8 ft 1 in Tall  
 General Shipping Information: Yes: Does this Unit Run? Yes: If self propelled, does the unit travel? Yes: Inflated Tires - item can roll? No: Is the unit taller than 12? No: Is the unit wider than 8'6"? No: Noticeable fluid leaks?

Road Related Shipping Info: Yes: Lights Operate? Yes: Brakes Operate? Yes: Tires OK?

## DISCLAIMER

### General

The Detailed Equipment Information is limited in scope, and Ritchie Bros. Auctioneers has not inspected any aspects or components of the equipment other than those expressly set forth herein. Unless expressly stated, we make no representations or warranties, express or implied, concerning the equipment or its components, including without limitation any representations or warranties concerning functionality, conformity or compliance with any safety standard or requirement of any applicable authority or regulatory body, fitness for any particular purpose, or merchantability. You are strongly advised to perform your own detailed inspection of the equipment prior to bidding.

### Functions

Equipment is not tested under load. We make no representation or warranty that equipment is operating in accordance with manufacturers' specifications. No inspection has been performed with respect to any functionality aspect other than those expressly included herein. Only select photos have been provided for individual undercarriage components, and may not be indicative of the condition of the entire undercarriage as a whole.

### Dimensions

Measurements are given as an estimate only. Actual loaded dimensions may vary based on truck/trailer height and the loaded machine configuration/position. It is the buyer's responsibility to measure all loads before leaving our auction site to ensure the load is safe for transport. All measurements should be verified by the buyer. DO NOT rely on these measurements for transportation purposes