



KEEP BACK 300FT/190M

WARNING



GVW 11,730 KG
TARE 3,700 KG

HTH623C

Varat



WARNING

KEEP BACK 300FT/90M

waratah
HTH623C
waratah





⚠ DANGER

⚠ WARNING

⚠ WARNING

DANGER

IMPORTANT

Before working in the machine, read the operator's manual.
Procedures must be strictly followed to prevent damage to the control system.

IMPORTANT

CAUTION

WARNING

1	2	3	4	5	6	7	8	9	10
11	12	13	14	15	16	17	18	19	20
21	22	23	24	25	26	27	28	29	30
31	32	33	34	35	36	37	38	39	40
41	42	43	44	45	46	47	48	49	50





WARNING

KEEP BACK 300FT/190M

WARNING

002.5



WARNING

KEEP BACK 300FT

KEEP BACK 30

WARNING
SAFETY
OPERATING INSTRUCTIONS
LOCATION

KEEP BACK

WARNING

600

TIC



TOP

KEEP BACK 300 FT / 90

WARNING



KEEP BACK



C75 904
430



HYDRA-PAAC



Waratah

HTH623C

PR-302

T102

WARNING

DANGER

FR22E



waratah

111H0230

002.5

WARNING

DANGER

DANGER







108

00R12/EN 8

 **waratah**
FORESTRY ATTACHMENTS

TYPE

HTH6230

PRODUCT
IDENTIFICATION NO.

1WA623CXHG0000424

WEIGHT

2900 kg 0.6416



WARATAH NZ LIMITED
TOKOROA NZ
MADE IN NEW ZEALAND





JOHN DEERE

EMISSION CONTROL INFORMATION
DEERE & COMPANY

This equipment has an engine that meets
U.S. EPA Emission Standards under
40 CFR 1089.625 and California Emissions
Standards under 13 CCR 2423(d).



HXE99185

Mfg Date: 2016

For more information -
www.JohnDeere.com/eqmtflex

CANADA ICES-002

NMB2

1346787-00

JOHN DEERE

Product Identification Number

1T0903MHOHD314318





HARVESTER 903MH


MADE IN USA
DEERE & COMPANY, MOLINE, ILLINOIS, USA


1T0903MHOHD314318



7554.2 

 DEFA

5 

100% 



DEFULT Off

! --- C 12:37 PM

Security

Enter Passcode

0% 

0  r/min





VIN: 1T0903MHCHD314318

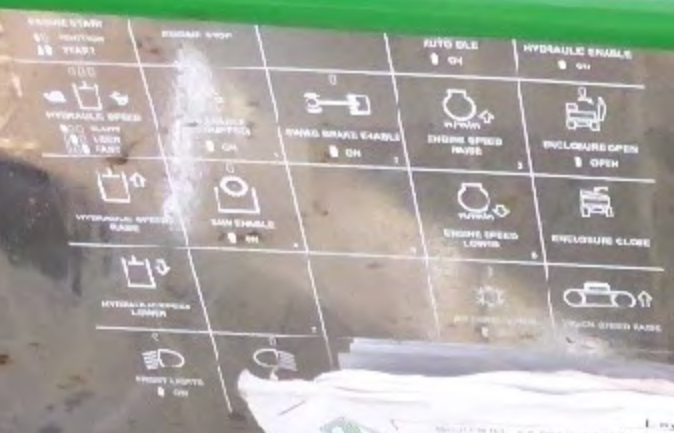
Hours: 7554.2

WARNING
STAY CLEAR of the chain saw. The chain saw can start and run without the operator's knowledge. NEVER operate the chain saw until you are properly trained. NEVER allow anyone to operate the chain saw until they are properly trained. Ensure a chain stop is approximately 15" forward of the sprocket and in front of the bar. The hazardous zone is 40m (130 ft) away from the operator during felling.

WARNING
ALWAYS keep the chain stop guard in the closed position. The chain stop guard is a safety device that prevents the chain from cutting the operator's leg. It is located on the side of the saw. The chain stop guard is a safety device that prevents the chain from cutting the operator's leg. It is located on the side of the saw.

Woodlands
Safety Manual





Incorrect parking position may damage the roller. Read the manual for details.

WARNING
 DO NOT stand and/or operate the harvester head when seated.
 OPERATE unless ALL personnel and equipment are clear of the agreed work zone.
 Turn the engine OFF when servicing the harvester head.
 Personal injury or death may occur.

Avoid personal injury from unexpected machine movement. Alternate control patterns are available. Always verify control response before operating.
 Alternate control patterns can be assigned through software. Read and understand the Operator's Manual.
 Control lever functions shown here are the factory settings.

This machine may be equipped with an engine fan that may unexpectedly purge debris from the radiator.
 Flying debris is a hazard and can cause personal injury.
 Stay clear of the machine until the engine has stopped.

Control panel with a large screen and several buttons. Buttons include a '2' button, a back arrow, a forward arrow, and a document icon.

Control panel with a grid of 16 buttons, each with a different icon representing various machine functions.

Waratah brand mobile phone with a keypad and a small screen.

Hand throttle lever with a black grip and a silver base, used for engine speed control.

Operator's seat with a black, textured, perforated surface and a metal base.

Red document or manual page with text and diagrams, partially visible at the bottom of the frame.



MOTUWETHFRSASU °C
88:88







WARNING



WARNING

BACK

WARNING















