

## ITEM DETAILS - 2018 John Deere 903M

Thursday, November 26, 2020

### DETAILED EQUIPMENT INFORMATION

A qualified Ritchie Bros. employee collected detailed equipment information and performed functional tests on the key components of this asset.

#### General Description

Inspector Name: 11/2  
 TM Name: EVA.SMOL  
 Sale Number: 1000120  
 Sale Location: IC - Grande Prairie, AB, CAN  
 Sale Date: Dec 31, 2020  
 Owner Code: C75  
 Schedule A: 907  
 Schedule A Modifier: 0  
 Sequence Number: 0  
 Lot: 907  
 Title In Hand: No  
 In Yard: Yes  
 In Yard Date: 2020-11-02  
 Warranty Eligible: No  
 Year: 2018

Manufacturer: John Deere  
 Model: 903M  
 Asset Type: Feller Buncher  
 Asset Type Free Form: Feller Buncher  
 Serial Number or VIN: 1T0903MXAJF324228  
 S/N Location: front  
 Serial Number Checked: Yes  
 Unused: No  
 Glidered: No  
 CE: No  
 Condition

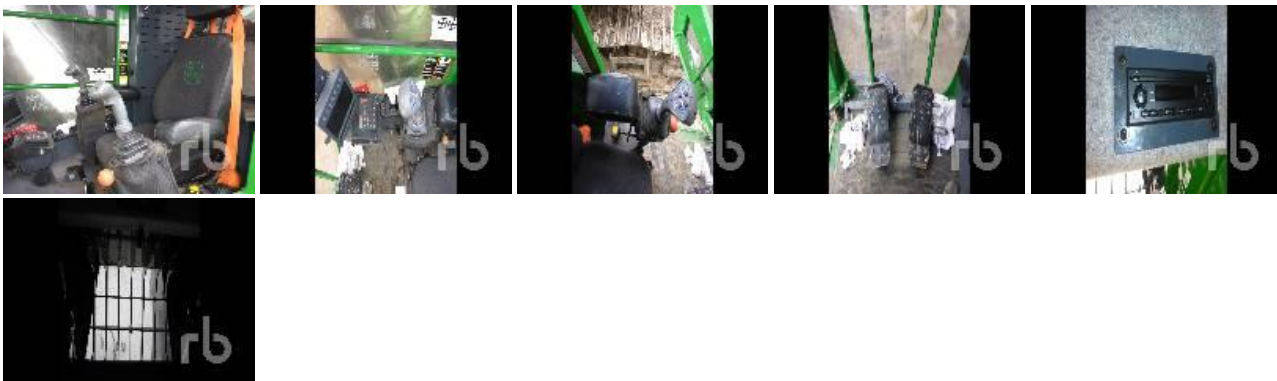
Hrs/Mil/kms: 3128 hrs

R&R Required: No  
 Owner Book Notes:  
 Comes With: FR22B head



#### Operator Station

No data.



#### Engine

EPA: No

---

### Front Attachment Sawhead

Model: FR22B



---

### Boom Operation

No data.



---

### Tracked Undercarriage

No data.



---

### Body Details

No data.



---

### Undercarriage

No data.

---

### Accessories

No data.

---

### Functionality Tests

No data.

---

### Dimensions

No data.

---

**Supporting Documents**

No data.

---

**R&R**

No data.

---

**DISCLAIMER****General**

The Detailed Equipment Information is limited in scope, and Ritchie Bros. Auctioneers has not inspected any aspects or components of the equipment other than those expressly set forth herein. Unless expressly stated, we make no representations or warranties, express or implied, concerning the equipment or its components, including without limitation any representations or warranties concerning functionality, conformity or compliance with any safety standard or requirement of any applicable authority or regulatory body, fitness for any particular purpose, or merchantability. You are strongly advised to perform your own detailed inspection of the equipment prior to bidding.

**Functions**

Equipment is not tested under load. We make no representation or warranty that equipment is operating in accordance with manufacturers' specifications. No inspection has been performed with respect to any functionality aspect other than those expressly included herein. Only select photos have been provided for individual undercarriage components, and may not be indicative of the condition of the entire undercarriage as a whole.

**Dimensions**

Measurements are given as an estimate only. Actual loaded dimensions may vary based on truck/trailer height and the loaded machine configuration/position. It is the buyer's responsibility to measure all loads before leaving our auction site to ensure the load is safe for transport. All measurements should be verified by the buyer. DO NOT rely on these measurements for transportation purposes