



DEKRA Services Inc.
Customer Service 770-257-0107

BUS

INSPECTOR: 5932
 INSPECTION ID
 142712

INSP DATE | VIN (LAST 8) | PO NUMBER
 06/16/2021 | J3041590

Year: 2018 Make: VAN HOOL
 Model: TX45 VIN: YE2YC81BXJ3041590

SPECIFICATION WORKSHEET

Interior Options	
Interior Color:	BLUE

Steering Options	
Power Steering?:	Yes

Engine Options A	
Eng Make:	DETROIT
Eng Model:	DD13
Eng Serial:	471941S0506856
Eng HP:	400
Cruise:	Yes
Clean air idle:	Yes

Overall Condition	
Overall Length:	45'
Overall Height:	149"
Overall Width:	102"

Engine Options B	
Odometer:	124733
Hub odometer:	NA
ECU HP:	525
ECU Miles:	123433
Eng Hours:	4451

Miscellaneous	
Seating Capacity:	58
Electronic Engine Controls:	Yes
Full Gauge Package:	Yes
Wraparound Dash:	Yes
Power Mirrors:	Yes
Tilt / Telescopic Steering Wheel:	Yes
AirRide Driver's Seat:	Yes
Restroom:	Yes
PA System:	Yes
Audio - Video System:	Yes
Number of Video Monitors:	5
Multi-Disc CD Changer:	No
Individual multi-Channel Audio System:	No
Global Positioning System:	Yes
In Motion Satellite TV System:	No
Road Viewing Monitor System:	Yes
Wheelchair Lift:	No
Underfloor Storage with Lift:	No
Parcel Rack Storage with Lift:	No
Traction Control:	Yes
Power Windshield Sun Visors:	Yes
Tour Guide Seat:	Yes
Other:	NA
Was Unit driven In ?:	Yes
Did Unit need to be jump started ?:	No
Was Unit towed in ?:	No
Did Unit start and run ?:	Yes
Unit Condition:	GOOD
If Unit is not driveable or will not start, Explain:	NA
Any extra options or features not listed on front page and any additional comments: NA	

Engine Options C	
Eng Brake:	JAKE
Fuel:	DIESEL
FT1 Capac (Gal):	231

Exterior Options A	
Air Horns:	SINGLE
Mirrors:	DUAL POWER
Exterior Color:	WHITE

Axle / Susp Options	
WheelBase (In):	316
Rear Ratio:	4.25
F Axle (lbs):	17,640
R Axle (lbs):	17,640
GVWR (lbs):	54,000
Suspension:	AIR RIDE
Tag Axle Capacity:	27,575
Rear Axle Model:	NA
Independent Front Suspension:	Yes
Full Coach Raise and Lowering Susp.:	Yes
Tag Axle Unloading System:	Yes
Front Susp. Kneeling System:	Yes

Transmission Options	
Trans Make:	ALLISON
Trans Model:	3000/4000 5TH GEN
Trans Speed:	6



DEKRA Services Inc.
Customer Service 770-257-0107

BUS

INSPECTOR: 5932
 INSPECTION ID
 142712

INSP DATE | VIN (LAST 8) | PO NUMBER
 06/16/2021 | J3041590 |

Brakes Options	
ABS:	YES
HYD:	NO
AIR:	YES
DISK:	NO
DRUM:	YES
Brake Plates:	FRONT N / REAR N

Brakes	
Drive Axle Brakes:	(1)
	(2)
	(3)
	(4)
	(5)

Tires [Front]	
Size:	315/80 R22.5
Wheels:	ALUMINUM
Detail:	

Tires [Rear]	
Size:	315/80 R22.5
Wheels:	ALUMINUM
Detail:	

	STEER AXLE	DRIVE AXLE #1	DRIVE AXLE #2
RIGHT	10 / 32nd HIGHWAY / V	5 / 32nd LUG / V	6 / 32nd LUG / V
FRONT		7 / 32nd LUG / V	/ 32nd /
LEFT	10 / 32nd HIGHWAY / V	7 / 32nd LUG / V	/ 32nd /
		6 / 32nd LUG / V	7 / 32nd LUG / V

Brake Legend
BD = DRUM HAS MORE THAN 1/16 INCH LIP CL = CRACKED LINING LS = LEAKING SEAL(S)
Tire Legend
C = CUT D = DRY ROT F = FLAT M = MISMATCHED TIRES/CASING MA = MISMATCHED AXLES (FRONT vs. REAR) V = VIRGIN W = IRREGULAR WEAR R = RECAP: 1 = ONCE, 2 = TWICE, 3 = 3 TIMES
Tread Legend
H = HIGHWAY L = LUG



DEKRA Services Inc.
Customer Service 770-257-0107

BUS

INSPECTOR: 5932
INSPECTION ID
142712

INSP DATE | **VIN (LAST 8)** | **PO NUMBER**
 06/16/2021 | J3041590 |

CONDITION REPORT

Engine Compartment Area		COMMENTS
X	Engine Oil Level	LOW OIL
Operational Test		COMMENTS
In Cab Inspection		COMMENTS
Outside Inspection		COMMENTS
X	Paint Condition & Physical Damage	REAR BUMPER DAMAGED
Under Vehicle Inspection		COMMENTS
Tires/Wheels/Brakes		COMMENTS
X	Tires/Wheels	6 BAD TIRES

Additional Services	Requested	Status	Comments



DEKRA Services Inc.
Customer Service 770-257-0107

BUS

INSPECTOR: 5932
INSPECTION ID
142712

INSP DATE | **VIN (LAST 8)** | **PO NUMBER**
06/16/2021 | J3041590

RECONDITIONING AND SUPPLEMENTAL ESTIMATE

ITEM	DESCRIPTION / COMMENTS
Engine Oil Level	X LOW OIL
Paint Condition & Physical Damage	X REAR BUMPER DAMAGED
Tires/Wheels	X 6 BAD TIRES

COMMENTS:
THE COACH WAS INSPECTED AT THE REPO LOT. THE UNIT WAS IN GOOD RUNNING CONDITION. THERE WAS ONE ACTIVE CODE AND VERY LOW OIL. THERE WAS DAMAGE TO THE REAR BUMPER AND SIX BAD TIRES. THERE WERE TWENTY EIGHT PLUGS WITH USB PORTS.

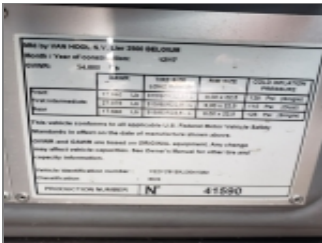


DEKRA Services Inc.
Customer Service 770-257-0107

BUS

INSPECTOR: 5932
INSPECTION ID
142712

INSP DATE | VIN (LAST 8) | PO NUMBER
06/16/2021 | J3041590 |



VIN



DASH W/ STEERING WHEEL



LEFT SIDE



FRONT LEFT CORNER



FRONT OF BUS



FRONT RIGHT CORNER



RIGHT SIDE



REAR RIGHT CORNER



RIGHT REAR TIRES



REAR OF BUS



REAR LEFT CORNER



LEFT REAR TIRES



ENTRY WAY STEPS AT FRONT
DOOR



COMPLETE DRIVERS SEAT



ODOMETER



INSIDE OF BUS, FRONT TO
BACK



DEKRA Services Inc.
Customer Service 770-257-0107

BUS

INSP DATE | VIN (LAST 8) | PO NUMBER
06/16/2021 | J3041590

INSPECTOR: 5932
INSPECTION ID
142712



FLOOR OF BUS, FRONT TO BACK



INSIDE OF BUS, BACK TO FRONT



FLOOR OF BUS, BACK TO FRONT



INSIDE RESTROOM #1



SEATS



LEFT STEER TIRE



RIGHT STEER TIRE



ENGINE COMPARTMENT



ENGINE FAMILY NUMBER



ENGINE COMPARTMENT
RIGHT SIDE



ENGINE COMPARTMENT LEFT
SIDE



INSIDE STORAGE
COMPARTMENTS



ADDITIONAL 1



ADDITIONAL 2



ADDITIONAL 3



ADDITIONAL 4



DEKRA Services Inc.
Customer Service 770-257-0107

BUS

INSPECTOR: 5932
INSPECTION ID
142712

INSP DATE | VIN (LAST 8) | PO NUMBER
06/16/2021 | J3041590

MEMBER LIFE REPORT

Component	Manufacturer	Part Number	Year	Condition	Notes
Engine	Isuzu	4JG15	2015	Good	
Transmission	Isuzu	7JG10	2015	Good	
Drive Shaft	Isuzu	4JG15	2015	Good	
Front Suspension	Isuzu	4JG15	2015	Good	
Rear Suspension	Isuzu	4JG15	2015	Good	
Brakes	Isuzu	4JG15	2015	Good	
Steering	Isuzu	4JG15	2015	Good	
Wipers	Isuzu	4JG15	2015	Good	
Windows	Isuzu	4JG15	2015	Good	
Interior	Isuzu	4JG15	2015	Good	
Exterior	Isuzu	4JG15	2015	Good	
Lighting	Isuzu	4JG15	2015	Good	
Electrical	Isuzu	4JG15	2015	Good	
Fluids	Isuzu	4JG15	2015	Good	
Tires	Isuzu	4JG15	2015	Good	

ADDITIONAL 5

MEMBER LIFE REPORT

Component	Manufacturer	Part Number	Year	Condition	Notes
Engine	Isuzu	4JG15	2015	Good	
Transmission	Isuzu	7JG10	2015	Good	
Drive Shaft	Isuzu	4JG15	2015	Good	
Front Suspension	Isuzu	4JG15	2015	Good	
Rear Suspension	Isuzu	4JG15	2015	Good	
Brakes	Isuzu	4JG15	2015	Good	
Steering	Isuzu	4JG15	2015	Good	
Wipers	Isuzu	4JG15	2015	Good	
Windows	Isuzu	4JG15	2015	Good	
Interior	Isuzu	4JG15	2015	Good	
Exterior	Isuzu	4JG15	2015	Good	
Lighting	Isuzu	4JG15	2015	Good	
Electrical	Isuzu	4JG15	2015	Good	
Fluids	Isuzu	4JG15	2015	Good	
Tires	Isuzu	4JG15	2015	Good	

ADDITIONAL 6

MEMBER LIFE REPORT

Component	Manufacturer	Part Number	Year	Condition	Notes
Engine	Isuzu	4JG15	2015	Good	
Transmission	Isuzu	7JG10	2015	Good	
Drive Shaft	Isuzu	4JG15	2015	Good	
Front Suspension	Isuzu	4JG15	2015	Good	
Rear Suspension	Isuzu	4JG15	2015	Good	
Brakes	Isuzu	4JG15	2015	Good	
Steering	Isuzu	4JG15	2015	Good	
Wipers	Isuzu	4JG15	2015	Good	
Windows	Isuzu	4JG15	2015	Good	
Interior	Isuzu	4JG15	2015	Good	
Exterior	Isuzu	4JG15	2015	Good	
Lighting	Isuzu	4JG15	2015	Good	
Electrical	Isuzu	4JG15	2015	Good	
Fluids	Isuzu	4JG15	2015	Good	
Tires	Isuzu	4JG15	2015	Good	

ADDITIONAL 7

