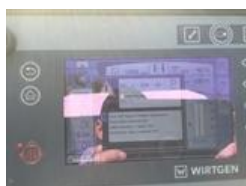


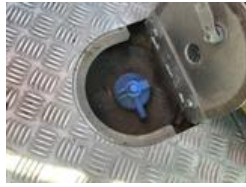
# 1000 WIRTGEN W210I

UNIT: 15201154

[Download Reconditioning Printout](#)













## UNIT SPECS

Customer

Wells Fargo (IMS)

## LOCATION

**Wells Fargo (IMS)**



Please call Pickup Support for location information  
North East, MD 21901

## GENERAL APPEARANCE

<b>UID</b>	15201154	<b>CE Mark</b>	CE Marked
------------	----------	----------------	-----------

## SAFETY

<b>Travel Alarm</b>	Operational	<b>Horn</b>	Operational
---------------------	-------------	-------------	-------------

<b>Seat Belts</b>	Not equipped	<b>Safety Lock Out/Stop</b>	Operational
-------------------	--------------	-----------------------------	-------------

<b>Current Operator/Maintenance Manual</b>	No	<b>Current Safety Manual</b>	No
--	----	------------------------------	----

## CONTROL STATION

<b>Seats/Armrests Rating</b>	Both seats have cracks and rips	<b>Steering Control</b>	Good
------------------------------	---------------------------------	-------------------------	------

<b>Hydraulic Controls</b>	Good	<b>Drivetrain Controls</b>	Good
---------------------------	------	----------------------------	------

### Engine Oil Pressure

The fault indicator shuts off after the engine oil pressure rises.

### Warning Lights

Check engine light stays on, engine 1 error message, dpf cleaning blocked, cable fracture exit, cable fracture exit out2, cable fracture exit out 3, cable fracture exit out 4, short circuit exit 1,2,3,4 light stays on, 18 different warning lights stay on

<b>Gauges</b>	Operational
---------------	-------------

<b>Hour Meter/Odometer (Start)</b>	3817 hrs
------------------------------------	----------

<b>Hour Meter/Odometer</b>	3818 hrs, Operational hour meter
----------------------------	----------------------------------

### Limited Function Check (Control Station)

The main components are in place and operational as noted.

## ENGINE

<b>Emission Certification Label</b>	2016 US EPA Label, Requires Diesel Exhaust Fluid
-------------------------------------	--

<b>Blow By</b>	No noticeable vapor or pressure
----------------	---------------------------------

---

**Starter**

Operational

---

**Radiator**

Good

**Oil Leaks**

No dripping leaks

---

**Fuel Leaks**

No dripping leaks

**Cooling System Leaks**

No dripping leaks

---

**Limited Function Check (Engine)**

The engine started and ran.

---

**CHASSIS**

---

**Drive Motors**

Good

**Final Drives**

Good

---

**Limited Function Check (Drivetrain-Track)**

The drivetrain was operational.

---

**Limited Function Check (Chassis)**

The main chassis components functioned.

---

**Main Frame Condition**

Good

**Track Frame**

Good

---

**Holders And Cutting Bits**

Good

**Roller Frames**

Good

---

**Rotor Compartment Doors**

Good

**Conveyor Frame**

Good

---

**Conveyor Rollers Rating**

Good

**Collecting Conveyor**

34" Conveyor

---

**Discharge Conveyor**

Good

**Water System**

Not operationally checked

---

**Limited Function Check (Cold Planer)**

The main components functioned with minor wear throughout.

---

**SECTION 5**

---

**Pumps (Hydraulics)**

Good

**Valves**

Good

---

**Hydraulic Tank Rating**

Good

**Cylinders**

Good



Cylinder Pins and Bushings Condition      Good

**Limited Function Check (Hydraulics)**

The hydraulic system was operational.

**UNDERCARRIAGE**

Track Tensioner Condition      No visible damage

**Shoe Width**

12 in track shoes, Pads are all damaged and need replaced

Track Rollers Condition      No visible damage

**Pins and Bushings Turned?**      No

✓ Open Operator Station

✓ Open Operator Station

**RECONDITIONING**

Seats/Armrests - Both Seats Cracked/Torn      \$700



Warning Lights - Check Engine Light Stays On      \$2,500



---

**Dpf Cleaning Blocked**

**\$3,000**

---



---

**Short Circuit Exit 1,2,3,4 Light Stays On - Many Other Electrical codes, 18 Different Warning Lights Stay On**

**\$1,200**

---



---

**Shoe Width - All Track Pads Damaged**

**\$18,500**

---



**Total**

**\$25,900**

**“** 7 ft 2 in Cutting Width, Water System, 34 in Discharge Conveyor, Grade Control System