



DEKRA Services Inc.
Customer Service 770-257-0107

BUS

INSPECTOR: 5657
INSPECTION ID
140187

INSP DATE	UNIT NUMBER	VIN (LAST 8)	PO NUMBER
04/30/2021	577	K5192434	

Year	2019	Make	VOLVO
Model	9700	VIN	3CET2V925K5192434

SPECIFICATION WORKSHEET

Interior Options Interior Color: BLUE	Steering Options Power Steering?: Yes
---	---

Engine Options A Eng Make: VOLVO Eng Model: D13 Eng Serial: ENGINE TAG MISSING Eng HP: ENGINE TAG MISSING Cruise: Yes Clean air idle: No	Overall Condition Overall Length: 45' Overall Height: 12' 2" Overall Width: 102"
---	--

Engine Options B Odometer: 81354 Hub odometer: ECU HP: ECU Miles: 81354 Eng Hours: 3564	Miscellaneous Seating Capacity: 56 Electronic Engine Controls: Yes Full Gauge Package: Yes Wraparound Dash: Yes Power Mirrors: Yes Tilt / Telescopic Steering Wheel: Yes AirRide Driver's Seat: Yes Restroom: Yes PA System: Yes Audio - Video System: Yes Number of Video Monitors: 5 Multi-Disc CD Changer: Yes Individual multi-Channel Audio System: No Global Positioning System: No In Motion Satellite TV System: No Road Viewing Monitor System: No Wheelchair Lift: No Underfloor Storage with Lift: Yes Parcel Rack Storage with Lift: Yes Traction Control: Yes Power Windshield Sun Visors: Yes Tour Guide Seat: No Other: Was Unit driven In?: Yes Did Unit need to be jump started?: No Was Unit towed in?: No Did Unit start and run?: Yes Unit Condition: GOOD If Unit is not driveable or will not start, Explain: Any extra options or features not listed on front page and any additional comments: 110 VOLT OUTLETS WITH USB PORTS AT EACH SEAT
---	--

Engine Options C Eng Brake: EXHAUST Fuel: DIESEL FT1 Capac (Gal): 212

Exterior Options A Air Horns: SINGLE Mirrors: HEATED DUAL POWER Exterior Color: WHITE

Axle / Susp Options WheelBase (In): 304 Rear Ratio: ID TAG NOT AVAILABLE F Axle (lbs): 16500 R Axle (lbs): 22100 GVWR (lbs): 49400 Suspension: AIR RIDE Tag Axle Capacity: 10800 Rear Axle Model: ID TAG NOT AVAILABLE Independent Front Suspension: No Full Coach Raise and Lowering Susp.: No Tag Axle Unloading System: Yes Front Susp. Kneeling System: Yes
--

Transmission Options Trans Make: ALLISON Trans Model: B500 5TH GENERATION Trans Speed: 6
--



DEKRA Services Inc.
Customer Service 770-257-0107

BUS

INSPECTOR: 5657
INSPECTION ID
140187

INSP DATE 04/30/2021 UNIT NUMBER 577 VIN (LAST 8) K5192434 PO NUMBER

Brakes Options

ABS:	YES
HYD:	NO
AIR:	YES
DISK:	YES
DRUM:	NO
Brake Plates:	FRONT Y / REAR Y

Tires [Front]







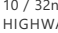



Size:	315/80 R22.5
Wheels:	ALUMINUM
Detail:	BRIDGESTONE R249

Brakes

Steer Axle Brakes:	80%	80%	(1)
Drive Axle Brakes:			(2)
	80%	80%	(3)
			(4)
			(5)
			(6)

Tires [Rear]

Size:	315/80 R22.5
Wheels:	ALUMINUM/STEEL
Detail:	BRIDGESTONE R249

	STEER AXLE	DRIVE AXLE #1	DRIVE AXLE #2
		9 / 32nd HIGHWAY / V	/ 32nd /
RIGHT	16 / 32nd HIGHWAY / V 	 	 
FRONT		9 / 32nd HIGHWAY / V	6 / 32nd HIGHWAY / V
		10 / 32nd HIGHWAY / V	6 / 32nd HIGHWAY / V
LEFT	 15 / 32nd HIGHWAY / V	 	 
		10 / 32nd HIGHWAY /	/ 32nd /

Brake Legend

BD = DRUM HAS MORE THAN 1/16 INCH LIP
CL = CRACKED LINING
LS = LEAKING SEAL(S)

Tire Legend

C = CUT D = DRY ROT F = FLAT
M = MISMATCHED TIRES/CASING
MA = MISMATCHED AXLES (FRONT vs.
REAR)
V = VIRGIN W = IRREGULAR WEAR
R = RECAP: 1 = ONCE, 2 = TWICE, 3 = 3 TIMES

Tread Legend

H = HIGHWAY L = LUG



DEKRA Services Inc.
Customer Service 770-257-0107

BUS

INSPECTOR: 5657
INSPECTION ID
140187

INSP DATE	UNIT NUMBER	VIN (LAST 8)	PO NUMBER
04/30/2021	577	K5192434	

CONDITION REPORT

Engine Compartment Area		COMMENTS
Operational Test		COMMENTS
In Cab Inspection		COMMENTS
Outside Inspection		COMMENTS
X	Paint Condition & Physical Damage	LEFT SIDE MIDDLE TO REAR OF BUS SCRATCHED
X	Lights and Reflectors	4 WAY FLASHERS INOPERATIVE
Under Vehicle Inspection		COMMENTS
Tires/Wheels/Brakes		COMMENTS
X	Tires/Wheels	4 TIRES LESS THAN 10/32" TREAD DEPTH

Additional Services	Requested	Status	Comments
---------------------	-----------	--------	----------



DEKRA Services Inc.
Customer Service 770-257-0107

BUS

INSPECTOR: 5657
INSPECTION ID
140187

INSP DATE	UNIT NUMBER	VIN (LAST 8)	PO NUMBER
04/30/2021	577	K5192434	

RECONDITIONING AND SUPPLEMENTAL ESTIMATE

ITEM	DESCRIPTION / COMMENTS
Paint Condition & Physical Damage	X LEFT SIDE MIDDLE TO REAR OF BUS SCRATCHED
Lights and Reflectors	X 4 WAY FLASHERS INOPERATIVE
Tires/Wheels	X 4 TIRES LESS THAN 10/32" TREAD DEPTH
#1 RIGHT SIDE STORAGE COMPARTMENT DOOR	STABILIZER ROD NOT HOOKED UP

COMMENTS:



DEKRA Services Inc.
Customer Service 770-257-0107

BUS

INSP DATE	UNIT NUMBER	VIN (LAST 8)	PO NUMBER
04/30/2021	577	K5192434	

INSPECTOR: 5657
INSPECTION ID
140187



VIN



DASH W/ STEERING WHEEL



LEFT SIDE



FRONT LEFT CORNER



FRONT OF BUS



FRONT RIGHT CORNER



RIGHT SIDE



REAR RIGHT CORNER



RIGHT REAR TIRES



REAR OF BUS



REAR LEFT CORNER



LEFT REAR TIRES



ENTRY WAY STEPS AT FRONT
DOOR



COMPLETE DRIVERS SEAT



ODOMETER



INSIDE OF BUS, FRONT TO
BACK



DEKRA Services Inc.
Customer Service 770-257-0107

BUS

INSP DATE	UNIT NUMBER	VIN (LAST 8)	PO NUMBER
04/30/2021	577	K5192434	

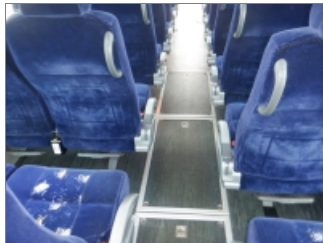
INSPECTOR: 5657
INSPECTION ID
140187



FLOOR OF BUS, FRONT TO
BACK



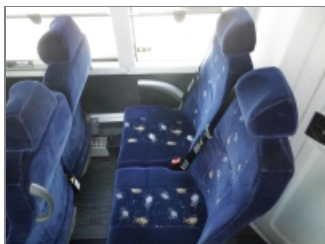
INSIDE OF BUS, BACK TO
FRONT



FLOOR OF BUS, BACK TO
FRONT



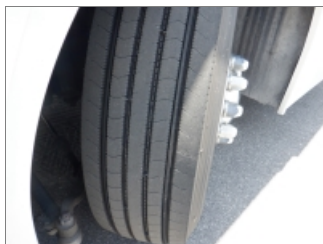
INSIDE RESTROOM #1



SEATS



LEFT STEER TIRE



RIGHT STEER TIRE



ENGINE COMPARTMENT



ENGINE FAMILY NUMBER



ENGINE COMPARTMENT
RIGHT SIDE



ENGINE COMPARTMENT LEFT
SIDE



INSIDE STORAGE
COMPARTMENTS



ADDITIONAL 1



ADDITIONAL 2



ADDITIONAL 3



ADDITIONAL 4



DEKRA Services Inc.
Customer Service 770-257-0107

BUS

INSP DATE 04/30/2021 UNIT NUMBER 577 VIN (LAST 8) K5192434 PO NUMBER

INSPECTOR: 5657
INSPECTION ID
140187



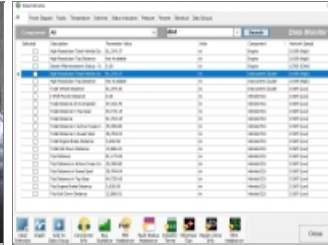
ADDITIONAL 5



ADDITIONAL 6



ADDITIONAL 7



ADDITIONAL 8



ADDITIONAL 9



ADDITIONAL 10



ADDITIONAL 11



ADDITIONAL 12



ADDITIONAL 13