

ITEM DETAILS - 2023 John Deere 544

Tuesday, March 24, 2026

DETAILED EQUIPMENT INFORMATION

A qualified Ritchie Bros. employee collected detailed equipment information and performed functional tests on the key components of this asset.

Find it in Yard

Assigned Lane and Spot: Located in Lane 7 Spot 25

General Appearance

Serial Number / VIN: 1DW544PAKPLZ17200

Serial Number Location: Front Frame Driver Side

Seller Reference Number: Seller Reference or Fleet Number:

Tires/ Undercarriage: Percentage Rating: 60%

Hour Meter / Odometer: 2746 hrs

Condition: Overall Condition for Age: Good

Features: Located in Lane 7 Spot 25, Enclosed Cab, Air Conditioner, Rear View Camera, Ride Control, Requires Diesel Exhaust Fluid, Hydraulic Coupler, 106 in Bucket, Forks, 20.5R25 Tires



Control Station

Control Station: Cab Type, Enclosed Cab, Air Conditioner, Rear View Camera, Ride Control

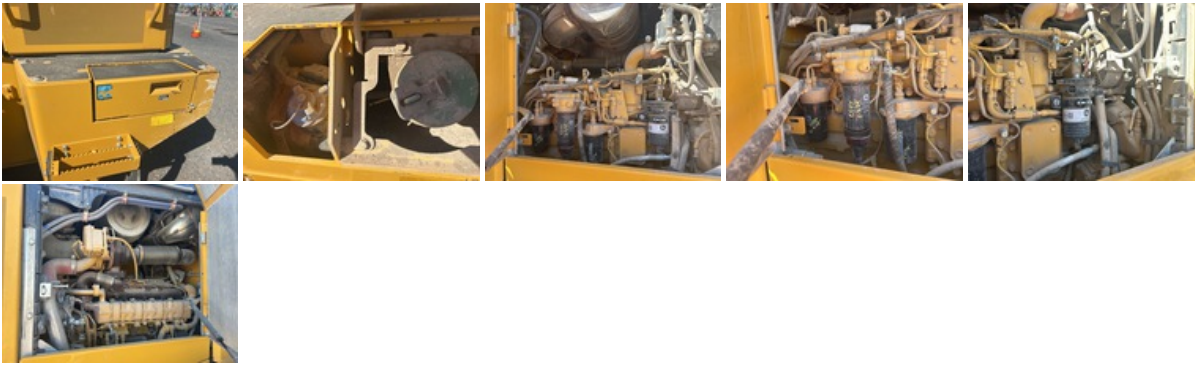
Limited Function Check: The main components are in place and operational as noted.



Engine

Engine: No US EPA Label Present Requires Diesel Exhaust Fluid

Limited Function Check: The engine started and ran.



Drivetrain

Limited Function Check: The drivetrain was operational.

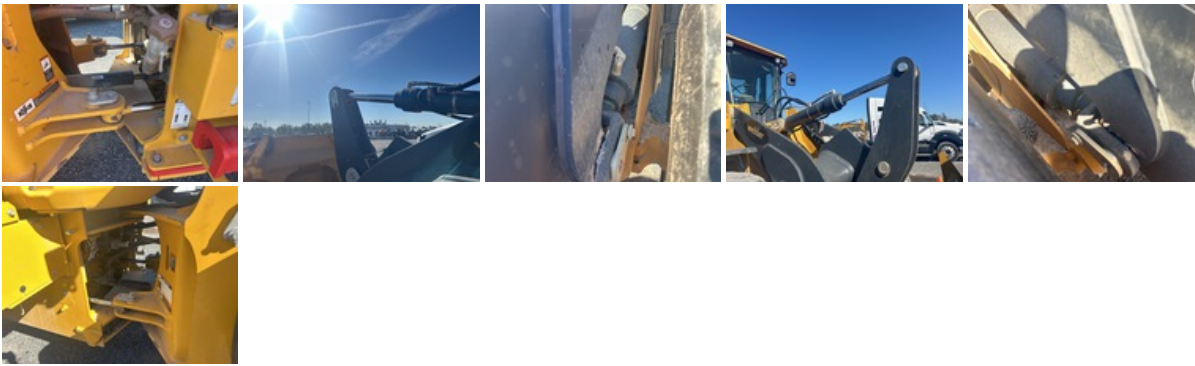


Brakes

Brakes: The brakes are operational.

Hydraulics

Limited Function Check: The hydraulic system was operational.



Specialty

Front Attachment: Front Attachment Details, Quick Coupler Type: Hydraulic Coupler, 106 in Bucket Type: Bucket, Forks



Chassis

Tires: 20.5R25 Tires



Logistics Information

Shipping Dimensions: 26 ft 3 in Long x 8 ft 10 in Wide x 11 ft 6 in Tall

General Shipping Information: Yes: Does this Unit Run? Yes: If self propelled, does the unit travel? Yes: Is the unit wider than 8'6"? Yes: Inflated Tires - item can roll? No: Is the unit taller than 12'? No: Noticeable fluid leaks?

Road Related Shipping Info: The lights and brakes were not operationally checked, Yes: Tires OK?

DISCLAIMER

General

The Detailed Equipment Information is limited in scope, and Ritchie Bros. Auctioneers has not inspected any aspects or components of the equipment other than those expressly set forth herein. Unless expressly stated, we make no representations or warranties, express or implied, concerning the equipment or its components, including without limitation any representations or warranties concerning functionality, conformity or compliance with any safety standard or requirement of any applicable authority or regulatory body, fitness for any particular purpose, or merchantability. You are strongly advised to perform your own detailed inspection of the equipment prior to bidding.

Functions

Equipment is not tested under load. We make no representation or warranty that equipment is operating in accordance with manufacturers' specifications. No inspection has been performed with respect to any functionality aspect other than those expressly included herein. Only select photos have been provided for individual undercarriage components, and may not be indicative of the condition of the entire undercarriage as a whole.

Dimensions

Measurements are given as an estimate only. Actual loaded dimensions may vary based on truck/trailer height and the loaded machine configuration/position. It is the buyer's responsibility to measure all loads before leaving our auction site to ensure the load is safe for transport. All measurements should be verified by the buyer. DO NOT rely on these measurements for transportation purposes