



DEKRA Services Inc.
Customer Service 770-257-0107

BUS

INSPECTOR: 5932
 INSPECTION ID
 142444

INSP DATE | VIN (LAST 8) | PO NUMBER
 06/09/2021 | L5200484 |

Year: 2020 Make: VOLVO
 Model: 9700 VIN: 3CET2V925L5200484

SPECIFICATION WORKSHEET

Interior Options	
Interior Color:	BLACK

Steering Options	
Power Steering?:	Yes

Engine Options A	
Eng Make:	VOLVO
Eng Model:	D13
Eng Serial:	1278942
Eng HP:	435
Cruise:	Yes
Clean air idle:	Yes

Overall Condition	
Overall Length:	45'
Overall Height:	12'
Overall Width:	8'

Engine Options B	
Odometer:	7140
Hub odometer:	NA
ECU HP:	500
ECU Miles:	7140
Eng Hours:	243

Miscellaneous	
Seating Capacity:	54
Electronic Engine Controls:	Yes
Full Gauge Package:	Yes
Wraparound Dash:	Yes
Power Mirrors:	Yes
Tilt / Telescopic Steering Wheel:	Yes
AirRide Driver's Seat:	Yes
Restroom:	Yes
PA System:	Yes
Audio - Video System:	Yes
Number of Video Monitors:	4
Multi-Disc CD Changer:	No
Individual multi-Channel Audio System:	No
Global Positioning System:	Yes
In Motion Satellite TV System:	No
Road Viewing Monitor System:	Yes
Wheelchair Lift:	Yes
Underfloor Storage with Lift:	No
Parcel Rack Storage with Lift:	No
Traction Control:	Yes
Power Windshield Sun Visors:	Yes
Tour Guide Seat:	No
Other:	NA
Was Unit driven In ?:	Yes
Did Unit need to be jump started ?:	No
Was Unit towed in ?:	No
Did Unit start and run ?:	Yes
Unit Condition:	GOOD
If Unit is not driveable or will not start, Explain:	NA
Any extra options or features not listed on front page and any additional comments: NA	

Engine Options C	
Eng Brake:	JAKE
Fuel:	DIESEL
FT1 Capac (Gal):	211

Exterior Options A	
Air Horns:	NONE
Mirrors:	DUAL POWER
Exterior Color:	GREEN/ORANGE

Axle / Susp Options	
WheelBase (In):	316
Rear Ratio:	2.64
F Axle (lbs):	16,500
R Axle (lbs):	10,800
GVWR (lbs):	49,400
Suspension:	AIR RIDE
Tag Axle Capacity:	22,100
Rear Axle Model:	NA
Independent Front Suspension:	Yes
Full Coach Raise and Lowering Susp.:	Yes
Tag Axle Unloading System:	Yes
Front Susp. Kneeling System:	Yes

Transmission Options	
Trans Make:	ALLISON
Trans Model:	gen 5
Trans Speed:	6



DEKRA Services Inc.
Customer Service 770-257-0107

BUS

INSPECTOR: 5932
 INSPECTION ID
 142444

INSP DATE | VIN (LAST 8) | PO NUMBER
 06/09/2021 | L5200484

Brakes Options	
ABS:	YES
HYD:	NO
AIR:	YES
DISK:	YES
DRUM:	NO
Brake Plates:	FRONT N / REAR N

Brakes	
Drive Axle Brakes:	(1)
	(2)
	(3)
	(4)
	(5)

Tires [Front]	
Size:	315/80 R22.5
Wheels:	ALUMINUM
Detail:	

Tires [Rear]	
Size:	315/80 R22.5
Wheels:	ALUMINUM
Detail:	

	STEER AXLE	DRIVE AXLE #1	DRIVE AXLE #2
RIGHT	14 / 32nd HIGHWAY / V	18 / 32nd LUG / V	18 / 32nd LUG / V
FRONT		17 / 32nd LUG / V	/ 32nd /
		18 / 32nd LUG / V	/ 32nd /
LEFT	16 / 32nd HIGHWAY / V		
		17 / 32nd LUG / V	18 / 32nd LUG / V

Brake Legend
BD = DRUM HAS MORE THAN 1/16 INCH LIP CL = CRACKED LINING LS = LEAKING SEAL(S)
Tire Legend
C = CUT D = DRY ROT F = FLAT M = MISMATCHED TIRES/CASING MA = MISMATCHED AXLES (FRONT vs. REAR) V = VIRGIN W = IRREGULAR WEAR R = RECAP: 1 = ONCE, 2 = TWICE, 3 = 3 TIMES
Tread Legend
H = HIGHWAY L = LUG



DEKRA Services Inc.
Customer Service 770-257-0107

BUS

INSPECTOR: 5932
INSPECTION ID
142444

INSP DATE | VIN (LAST 8) | PO NUMBER
06/09/2021 | L5200484

CONDITION REPORT

Engine Compartment Area		COMMENTS
X	Engine Oil Level	VERY LOW
Operational Test		COMMENTS
In Cab Inspection		COMMENTS
Outside Inspection		COMMENTS
Under Vehicle Inspection		COMMENTS
Tires/Wheels/Brakes		COMMENTS

Additional Services	Requested	Status	Comments
---------------------	-----------	--------	----------



DEKRA Services Inc.
Customer Service 770-257-0107

BUS

INSPECTOR: 5932
INSPECTION ID
142444

INSP DATE	VIN (LAST 8)	PO NUMBER
06/09/2021	L5200484	

RECONDITIONING AND SUPPLEMENTAL ESTIMATE

ITEM	DESCRIPTION / COMMENTS
Engine Oil Level	X VERY LOW

COMMENTS:
THE BUS WAS INSPECTED AT THE REPO YARD. THE COACH WAS IN GOOD RUNNING CONDITION. THE OIL LEVEL WAS VERY LOW. I WAS UNABLE TO DETERMINE THE BRAKE DEPTH BY SIGHT OR TOOL. THERE WAS NO EXTERIOR OR INTERIOR DAMAGE.

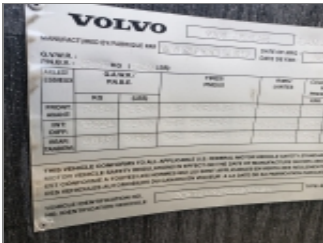


DEKRA Services Inc.
Customer Service 770-257-0107

BUS

INSP DATE | VIN (LAST 8) | PO NUMBER
06/09/2021 | L5200484

INSPECTOR: 5932
INSPECTION ID
142444



VIN



DASH W/ STEERING WHEEL



LEFT SIDE



FRONT LEFT CORNER



FRONT OF BUS



FRONT RIGHT CORNER



RIGHT SIDE



REAR RIGHT CORNER



RIGHT REAR TIRES



REAR OF BUS



REAR LEFT CORNER



LEFT REAR TIRES



ENTRY WAY STEPS AT FRONT DOOR



COMPLETE DRIVERS SEAT



ODOMETER



DASH HOUR METER



DEKRA Services Inc.
Customer Service 770-257-0107

BUS

INSP DATE | VIN (LAST 8) | PO NUMBER
06/09/2021 | L5200484

INSPECTOR: 5932
INSPECTION ID
142444



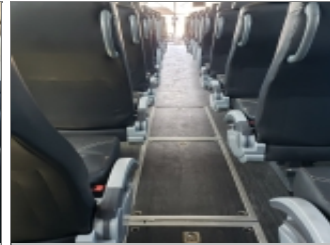
INSIDE OF BUS, FRONT TO BACK



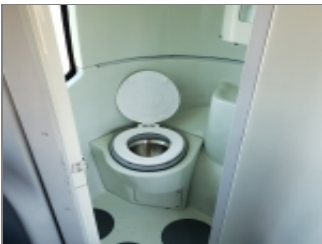
FLOOR OF BUS, FRONT TO BACK



INSIDE OF BUS, BACK TO FRONT



FLOOR OF BUS, BACK TO FRONT



INSIDE RESTROOM #1



SEATS



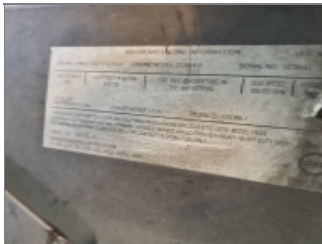
LEFT STEER TIRE



RIGHT STEER TIRE



ENGINE COMPARTMENT



ENGINE FAMILY NUMBER



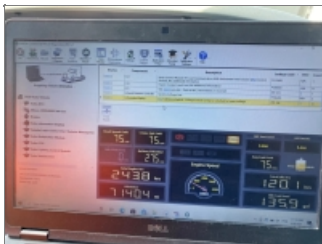
ENGINE COMPARTMENT
RIGHT SIDE



ENGINE COMPARTMENT
LEFT SIDE



INSIDE STORAGE
COMPARTMENTS



J PRO



ENGINE HOURS



ADDITIONAL 1



DEKRA Services Inc.
Customer Service 770-257-0107

BUS

INSPECTOR: 5932
INSPECTION ID
142444

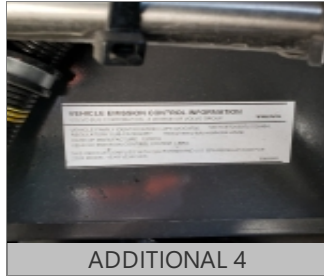
INSP DATE | VIN (LAST 8) | PO NUMBER
06/09/2021 | L5200484



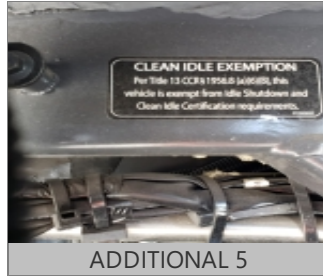
ADDITIONAL 2



ADDITIONAL 3



ADDITIONAL 4



ADDITIONAL 5



ADDITIONAL 6



ADDITIONAL 7



ADDITIONAL 8