



52033

WinOrwell
TOP MACHINES 4
DI 125420

9525

52033

6882362






VOLVO
9700
52033

9700
05-5155

8897362



 **WeDriveU**
TCP 0014288-A
CA 225455

VOLVO

50





PLEASE SUPPORT SOCIAL DISTANCING

PLEASE SUPPORT SOCIAL DISTANCING

PLEASE SUPPORT SOCIAL DISTANCING
THIS LEAD IS Temporary Closure

PLEASE SUPPORT SOCIAL DISTANCING







9525

52033

MAR 2010
889
KOREA

SHU
-5
311



52033

MAR California 88933G2
dmv.ca.gov

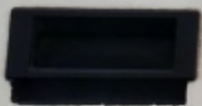




Jonsite dental













E PERMIT

55



SFMTA





VOLVO

HOW'S MY DRIVE

800-670-55

52033



CA
DMV

2020



50

Print Date: March 15, 2021 12:27 pm

VIN	3C8ET3V62D43184525
Vehicle Make	Volvo
Model	
Model Year	2018

Vehicle Components

Component	Description	Serial Number	Software Version	Notes
Transmission	Allison 3000 (899) 85 Gen	D4888DA77293281	N/A	41888 (H420/12/20) (CAN)

Vehicle Key Data Points

Parameter Description	Value	Parameter Description	Value
Idle Fuel Used	Not Available	DPF Soot Level	Not Available
Total Idle Hrs	Not Available	DPF Delete	Not Available
Total Engine Hrs	Not Available	Battery Potential	Not Available
Cruise Set Limit	Not Available	Hours Speed Limit	Not Available
Total Avg Fuel Econ	Not Available	Maintenance Indicator Lamp	Off
Red Stop Lamp	Off	Amber Warning Lamp	Off
Protect Lamp	Off	Parking Brake Switch	Not Available
DPF Lamps Cleared	Not Available	Exhaust System High Tempetal	Not Available
ABS Control Status	Not Available	ABS Control Status, Trailer	Not Available
Engine Speed	801 rpm	Odometer	137 483.83 mi
Engine Milemeter	137 483.83 mi	Instrument Cluster Odometer	Not Available

Vehicle Issues

Control/Driver AEB

Faults

Status	Component	Description	Lookup Code	PM	Clear
--------	-----------	-------------	-------------	----	-------

VOLVO

9700 US/CAN

CAN ICES-2/NMB-2

MANUFACTURED BY/FABRIQUE PAR

VOLVO GROUP MEXICO, S.A. DE C.V.

DATE OF MFG:

DATE DE FAB:

FEBRUARY 2018

G.V.W.R.:

P.N.B.V.: 22400 KG (49400 LBS)

AXLES/ ESSIEUX	G.A.W.R./ P.N.B.E.		TIRES/ PNEUS	RIMS/ JANTES	COLD INFLATION PRESS./ PRESS. A FROID		SINGLE OR DUAL/ SIMPLE OU DOUBLE
	KG	(LBS)			KPA	(PSI)	
FRONT: AVANT:	7380	16500	315 80R22.5 U1	225/9.00	830	120	S
INT: DIFF:	7000	15500	315 80R22.5 U1	225/9.00	620	90	D
REAR: TANDEM:	4899	10800	315 80R22.5 U1	225/9.00	586	85	S

THIS VEHICLE CONFORMS TO ALL APPLICABLE U.S. FEDERAL MOTOR VEHICLE SAFETY STANDARDS AND CANADIAN REGULATIONS IN EFFECT ON THE DATE OF MANUFACTURE SHOWN ABOVE. CE VEHICULE EST CONFORME A TOUTES LES NORMES QUI LUI SONT APPLICABLES EN VERTU DES REGLEMENTS SUR LA SECURITE DES VEHICULES EN VIGUEUR A LA DATE DE SA FABRICATION INDIQUEE CI-HAUT.

 VEHICLE IDENTIFICATION NO.
 NO. IDENTIFICATION VEHICULE

3CET2V926J5189525

TYPE: BUS B/A





 WeDriveU
TCP 0014288-A
CA 225455



52033

9525

88933G2



WeDriveU
TCP 0014288-A
CA 226455



50





VOLVO
HOW'S MY DRIVING?
800-870-5564
52033

9700
VOLVO BUS COMPANY
05-5155
MILWAUKEE, WI

California
88933G2



VOLVO
MADE IN SWEDEN
888-576-4564
52033

9700
05-5155

California
8893362





Stop safety



(1)

137487,4 km

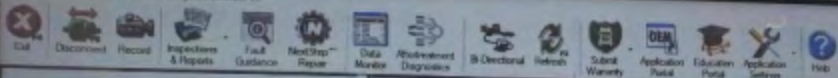
VOLVO 3377646







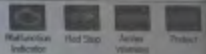




Cannot Detect ABS

2018 Volvo Vehicle
 Engine
 Allison 3000/4000 5th Gen

Status	Component	Description	Lookup Code	FR	Count



Vehicle Information
 VIN: 3CET2V935188525
 Manufacturer: Volvo
 Model Year: 2018

Crabber Spd Limit: 0 mph

Red Speed Limit: 0 mph

Total Engine Hrs: 00 hrs

Odometer
 1374938 mi



Best Fuel Economy: 00 mpg

Best Fuel Economy: 00 mpg

Best Fuel Economy: 00 mpg











California
88933G2
CALIFORNIA

22

VEHICLE EMISSION CONTROL INFORMATION

VOLVO BUS CORPORATION, A DIVISION OF VOLVO GROUP

VOLVO

VEHICLE FAMILY IDENTIFICATION: JVPT2VOCVF00 VIN: 3CET2V926J5189525
REGULATORY SUB-CATEGORY: Heavy heavy duty vocational vehicle
DATE OF MANUFACTURE: 02/2018
VEHICLE EMISSION CONTROL SYSTEM: LRR4

THIS VEHICLE COMPLIES WITH CALIFORNIA AND U.S. EPA REGULATIONS FOR
2018 MODEL YEAR VEHICLES

22855593





