





DOOSAN

ANTHONY'S  
612-177-2228

25

NEXT AUCTION

ANTHONY'S



DOOSAN

25

Avalanche  
823-275-2028

BLOG B







SOLIDPRO 700



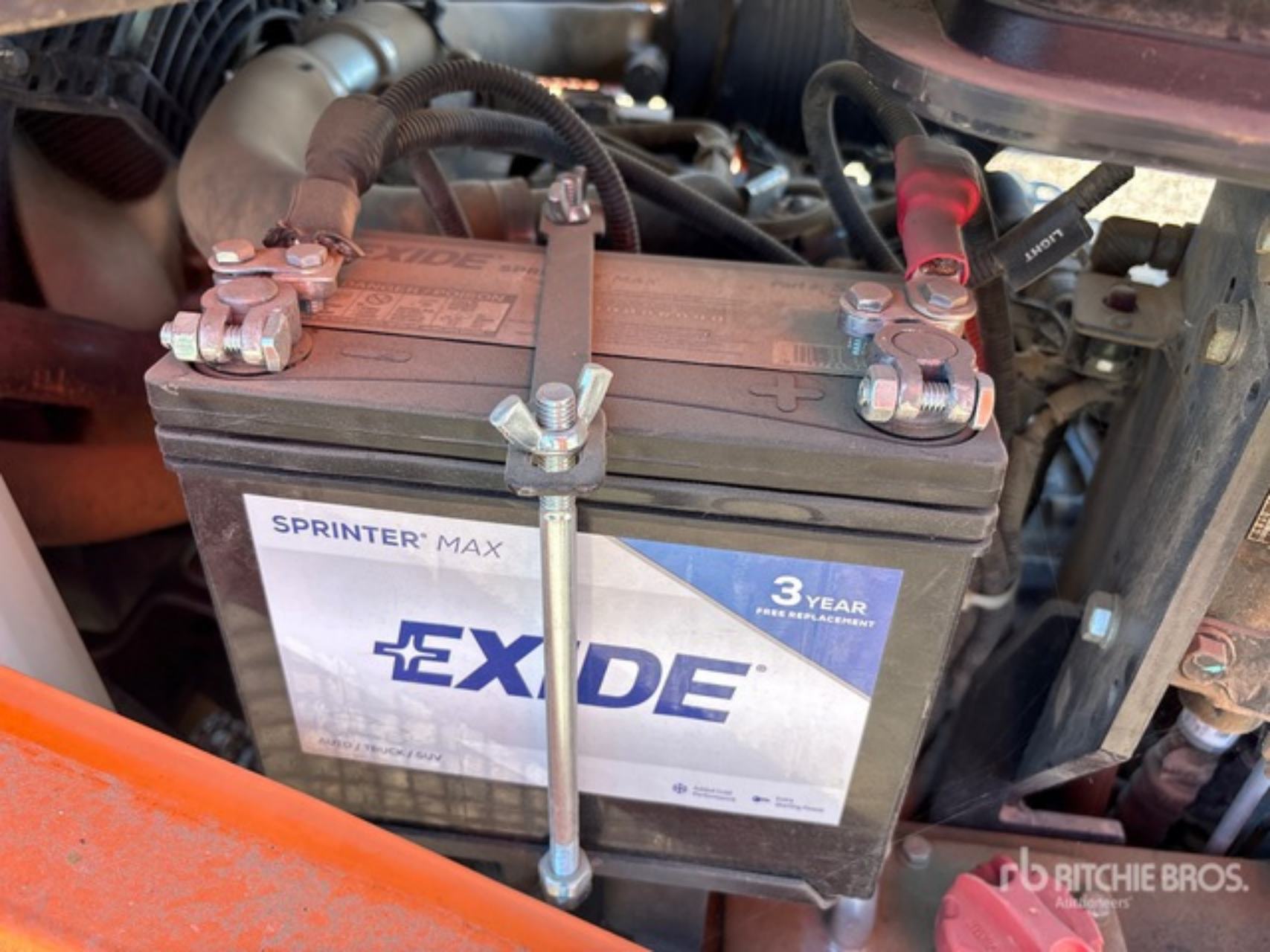








420105-01300

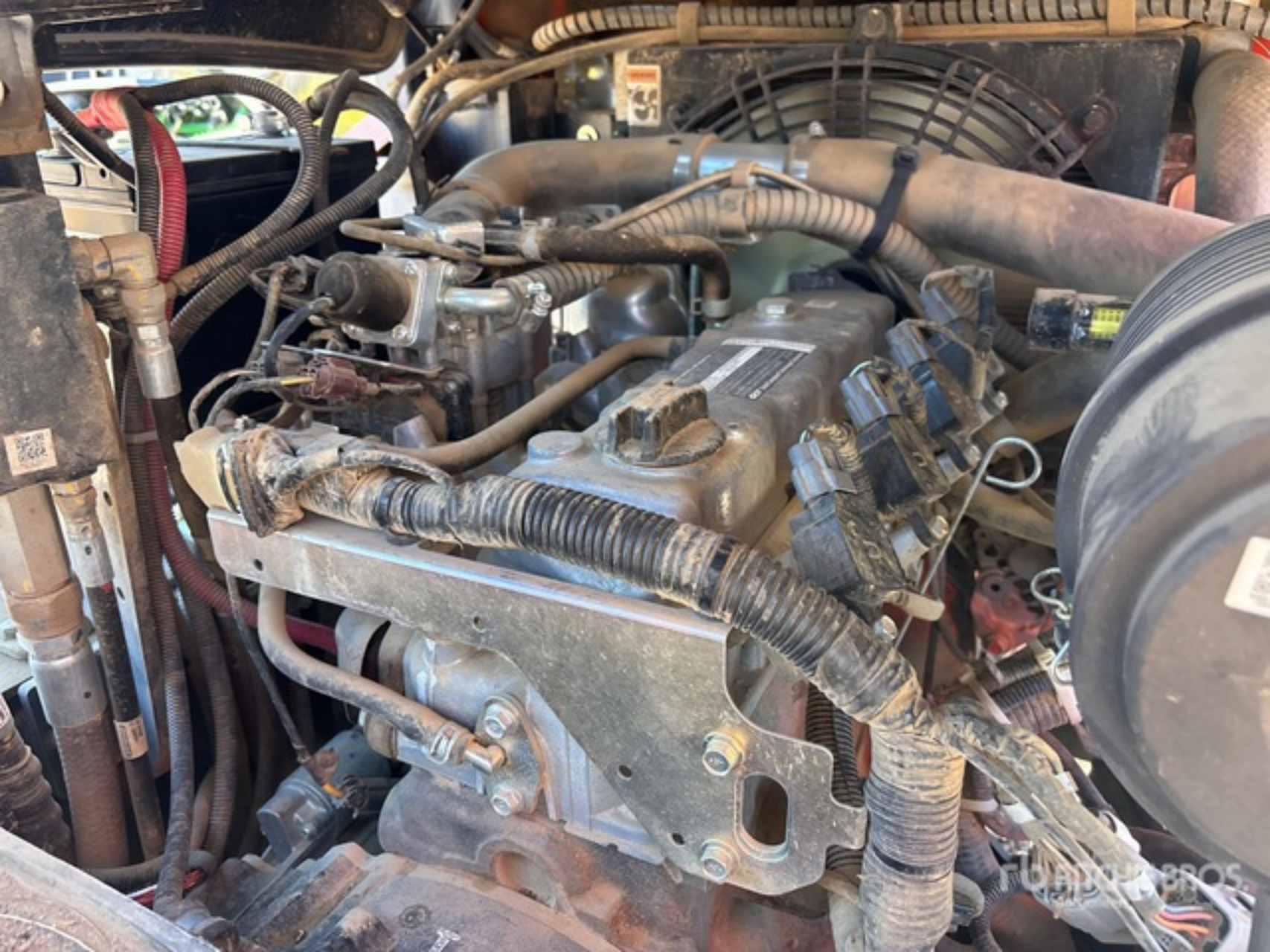


SPRINTER<sup>®</sup> MAX

**EXIDE<sup>®</sup>**

**3 YEAR**  
FREE REPLACEMENT

TRUCK / SUV



**GCT** Global Component Technologies Corporation

FOR 2020 LARGE NONROAD SI ENGINES, DEL ASSY

THIS ENGINE COMPLIES WITH CALIFORNIA AND U.S. EPA REGULATIONS

EPA Tier 2 EMISSION STANDARDS : HC+NOx=0.8, CO=20.6 g/kW-hr

CARB EMISSION STANDARDS : HC+NOx=0.8, CO=20.6 g/kW-hr

NO OTHER ADJUSTMENTS NEEDED.

SPARK PLUG GAP	0.9 mm
VALVE LASH	0.38 mm (HOT)
IDLE SPEED	NO OTHER ADJUSTMENTS NEEDED

USE IN VARIABLE-SPEED APPLICATIONS ONLY

EXHAUST EMISSION CONTROL TYPE: TBI, TWC, HOS2

THIS ENGINE IS CERTIFIED TO OPERATE ON LPG.

ENGINE FAMILY: LMPXB02.548D, ENGINE DISPLACEMENT: 2.5 LITERS

**EMISSION CONTROL INFORMATION** GK25 L 2020

OCT	2019
NOV	
DEC	
JAN	
FEB	
MAR	
APR	
MAY	
JUN	2020
JUL	
AUG	
SEP	
OCT	
NOV	
DEC	



SPRINTER<sup>®</sup> MAX

3 YEAR  
FREE REPLACEMENT

**EXIDE**

AUTO / TRUCK / SUV

**RTB** RITCHIE BROS.  
AUCTIONEERS



Doosan Corporation Industrial Vehicle B.G.  
MADE IN KOREA

**WARNING**

IMPROPER OPERATION OR  
MAINTENANCE COULD RESULT  
IN INJURY OR DEATH.  
READ AND UNDERSTAND THE  
OPERATION AND MAINTENANCE  
MANUAL BEFORE OPERATING.

TRUCK CODE: 0 ANH / ITSD / B06.1



990205-09270 ENGLISH

MODEL	SERIAL NO.	TYPE	INDUSTRIAL TRUCK
G25N-7	FGA14-1290-04652	LP	X
TRUCK WEIGHT $\pm 5\%$	9603	LB	4356 KG

ALLOWABLE WORKING CAPACITY WITH MAST VERTICAL

5 ° BACK TILT	MAST TYPE	FFT	TIRE TYPE S
TIRE TREAD	TIRE PRESS		TIRE SIZE
38.4 IN (F) X	PSI X	KPA (F) 7.0x15	
975 MM (R) X	PSI X	KPA (R) 6.5x10	

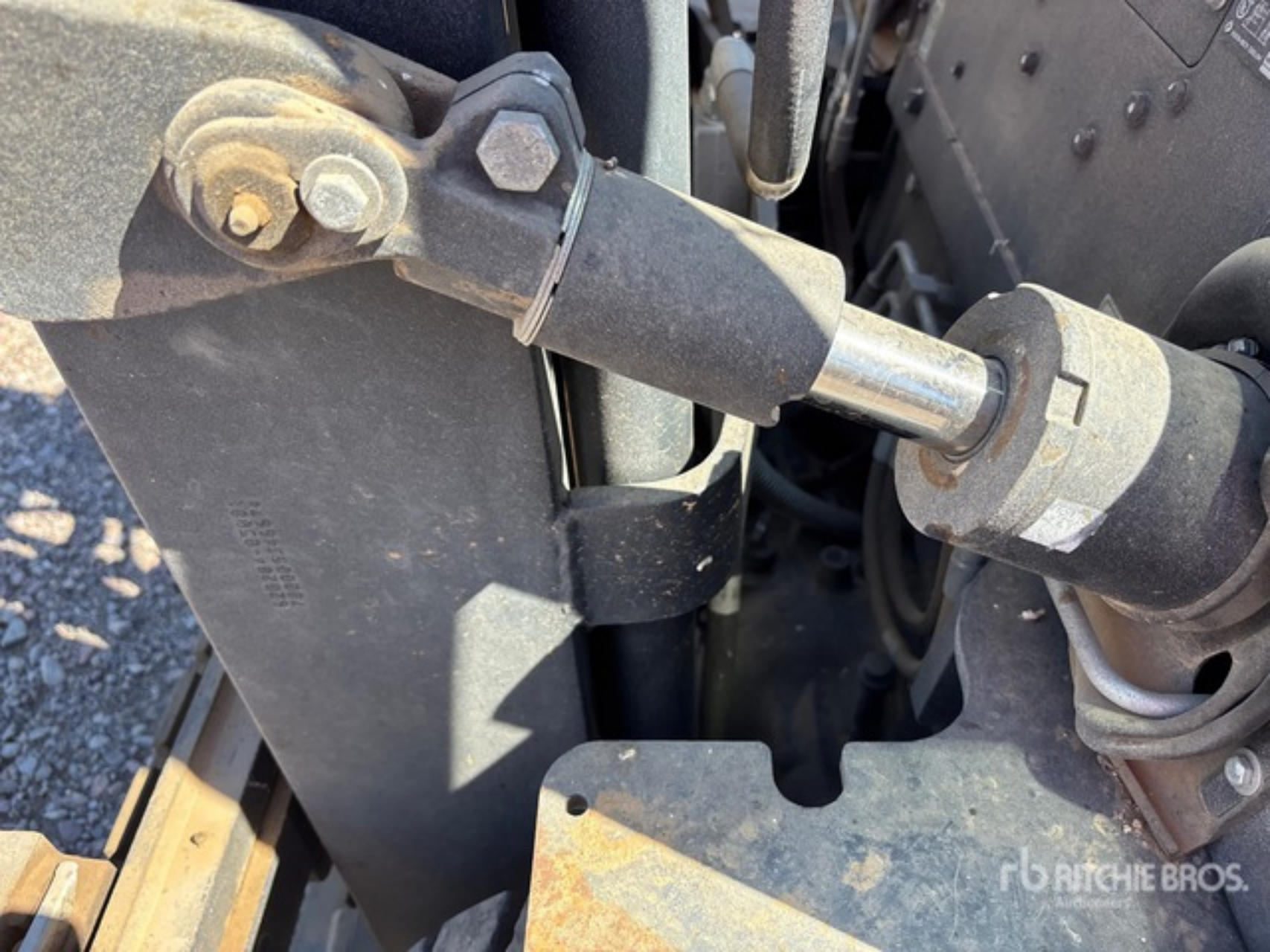
ATTACH	HSS	I.D	620204-06300		
A	B	C	D	CAPACITY	
IN	IN	IN	X IN	4600 LB	
24	189	24	X IN	X LB	
MM	MM	MM	X MM	2060 KG	
600	4805	600	X MM	X KG	

ELECTRIC TRUCK ONLY	TRUCK WT $\pm 5\%$	W/O BAT	X	LB	X	KG
BAT TYPE	X	VOLT	X	MAX AH CAP.	X	AT X HR RATE
BAT WT	X	LB	BAT	X	IN	
MIN/MAX	X	KG	SIZE	X	MM	



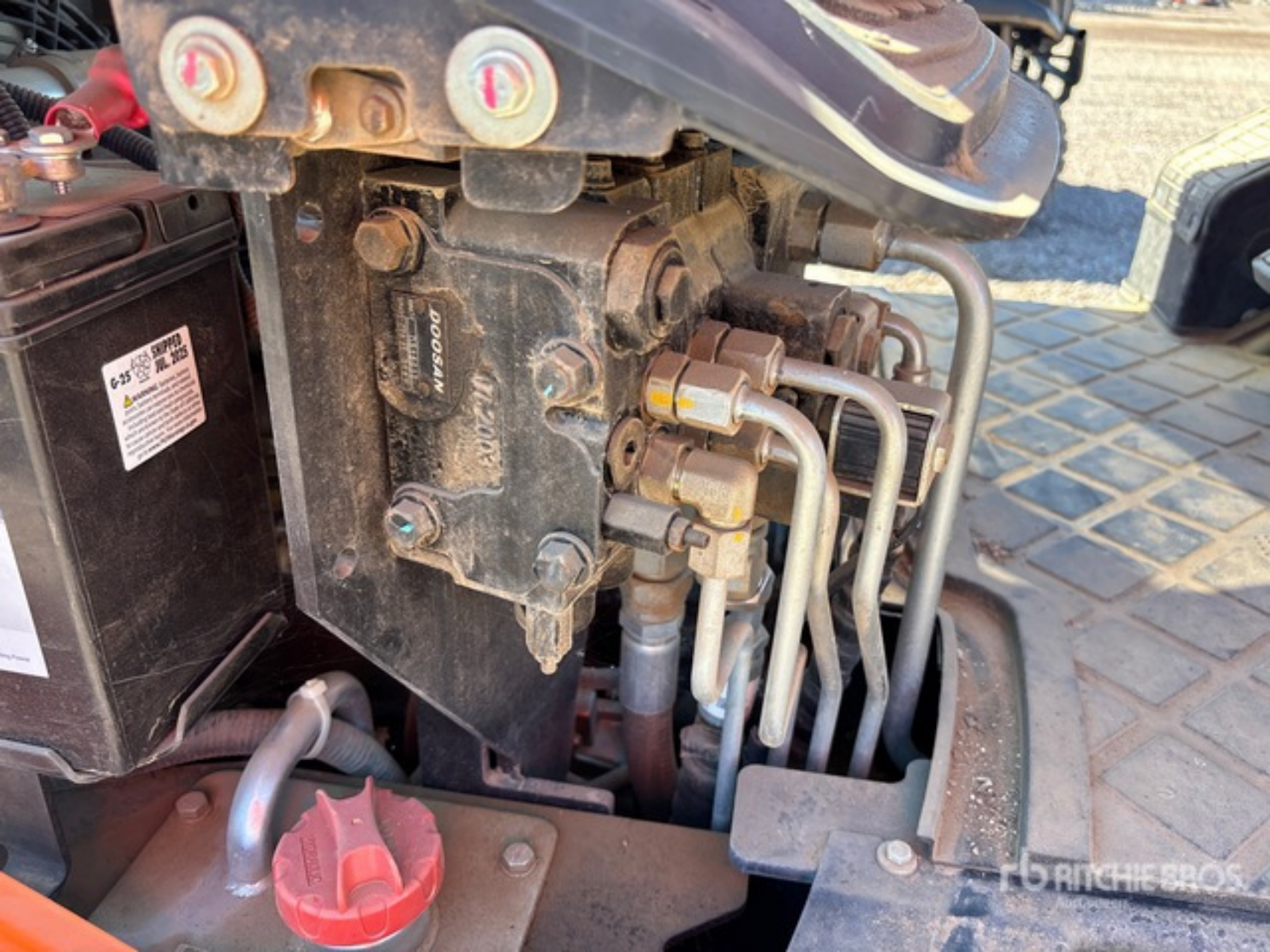






100000  
100000  
100000  
100000  
100000  
100000  
100000  
100000  
100000  
100000





6-95 SHIPPED JUL. 2005  
WARNING: Do not touch the engine or any other parts of the machine while it is running. The engine and other parts of the machine can become very hot and cause serious burns. Do not touch the engine or any other parts of the machine until it has cooled down. Do not touch the engine or any other parts of the machine if you have been drinking alcohol. Do not touch the engine or any other parts of the machine if you are tired or drowsy. Do not touch the engine or any other parts of the machine if you are under the influence of any drugs. Do not touch the engine or any other parts of the machine if you are feeling dizzy or lightheaded. Do not touch the engine or any other parts of the machine if you are feeling any other symptoms of dizziness or lightheadedness. Do not touch the engine or any other parts of the machine if you are feeling any other symptoms of fatigue or exhaustion. Do not touch the engine or any other parts of the machine if you are feeling any other symptoms of illness or discomfort. Do not touch the engine or any other parts of the machine if you are feeling any other symptoms of weakness or inability to perform your duties. Do not touch the engine or any other parts of the machine if you are feeling any other symptoms of impaired judgment or decision-making. Do not touch the engine or any other parts of the machine if you are feeling any other symptoms of impaired coordination or balance. Do not touch the engine or any other parts of the machine if you are feeling any other symptoms of impaired vision or hearing. Do not touch the engine or any other parts of the machine if you are feeling any other symptoms of impaired alertness or attention. Do not touch the engine or any other parts of the machine if you are feeling any other symptoms of impaired concentration or focus. Do not touch the engine or any other parts of the machine if you are feeling any other symptoms of impaired memory or recall. Do not touch the engine or any other parts of the machine if you are feeling any other symptoms of impaired communication or interaction with others. Do not touch the engine or any other parts of the machine if you are feeling any other symptoms of impaired performance or productivity. Do not touch the engine or any other parts of the machine if you are feeling any other symptoms of impaired safety or risk-taking. Do not touch the engine or any other parts of the machine if you are feeling any other symptoms of impaired judgment or decision-making. Do not touch the engine or any other parts of the machine if you are feeling any other symptoms of impaired coordination or balance. Do not touch the engine or any other parts of the machine if you are feeling any other symptoms of impaired vision or hearing. Do not touch the engine or any other parts of the machine if you are feeling any other symptoms of impaired alertness or attention. Do not touch the engine or any other parts of the machine if you are feeling any other symptoms of impaired concentration or focus. Do not touch the engine or any other parts of the machine if you are feeling any other symptoms of impaired memory or recall. Do not touch the engine or any other parts of the machine if you are feeling any other symptoms of impaired communication or interaction with others. Do not touch the engine or any other parts of the machine if you are feeling any other symptoms of impaired performance or productivity. Do not touch the engine or any other parts of the machine if you are feeling any other symptoms of impaired safety or risk-taking.

6 RITCHIE BROS.