

ITEM DETAILS - Terex

Friday, May 31, 2024

DETAILED EQUIPMENT INFORMATION

A qualified Ritchie Bros. employee collected detailed equipment information and performed functional tests on the key components of this asset.

General Appearance

Picture, Right Front Corner: TTHA1188EM0111173

Serial Number Location: Front Frame Passenger Side

Seller Reference Number: Seller Reference or Fleet Number:

Tires/ Undercarriage: Percentage Rating:, 40%

Picture, Left Rear Corner: 4694.2 hrs

Condition: Overall Condition for Age:, Fair

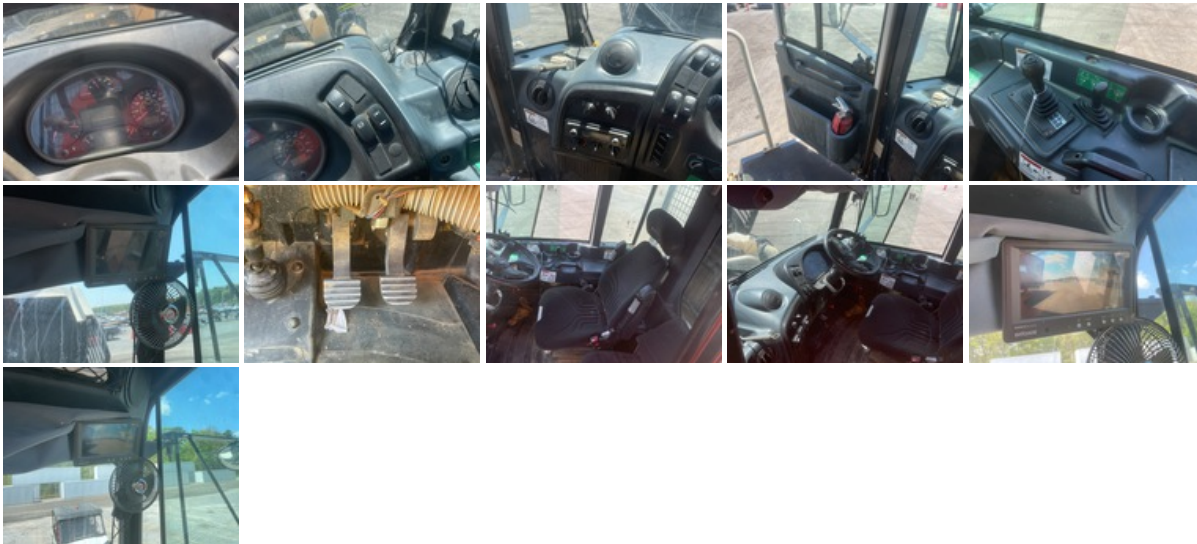
Features: Air Conditioner, Rear View Camera, US EPA Label,
23.5R25 Tires



Control Station

Control Station: Air Conditioner, Rear View Camera

Limited Function Check: The main components are in place and operational as noted.



Engine

Engine: US EPA Label

Limited Function Check: The engine started and ran.



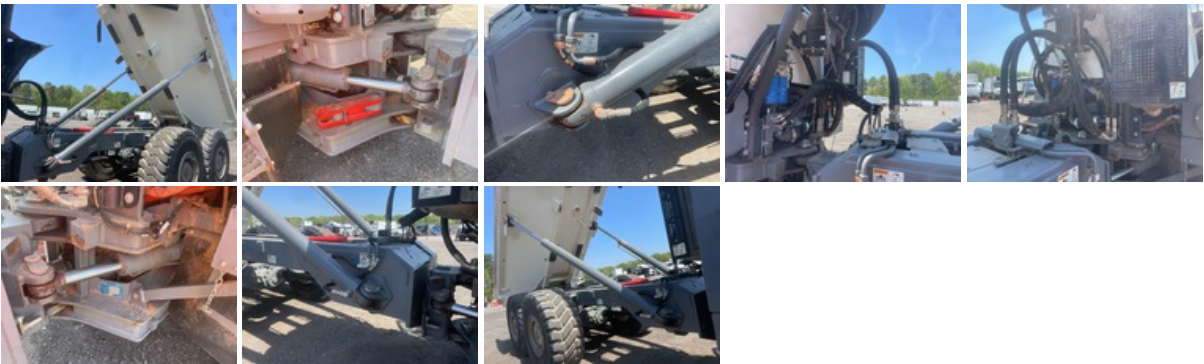
Drivetrain

Limited Function Check: The drivetrain was operational without a load.



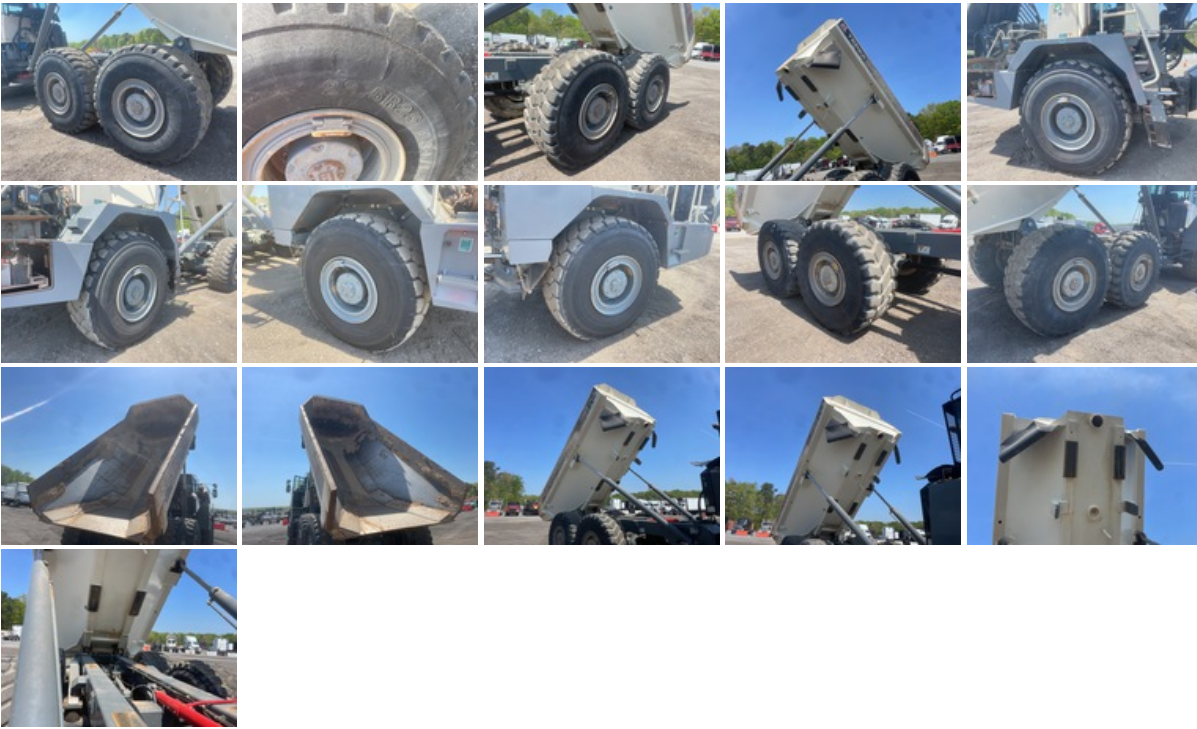
Hydraulics

Limited Function Check: The hydraulic system was operational.



Chassis

Tires: Haul Truck Tire Size Equip Type Dependant: 23.5R25 Tires



Deficiencies

Deficiencies: Deficient Components/Systems Include but are not limited to: PB switch freely hanging under dash

Logistics Information

Shipping Dimensions: 40 ft Long x 10 ft Wide x 13 ft Tall

General Shipping Information: Yes: Does this Unit Run? No: Noticeable fluid leaks?

DISCLAIMER

General

The Detailed Equipment Information is limited in scope, and Ritchie Bros. Auctioneers has not inspected any aspects or components of the equipment other than those expressly set forth herein. Unless expressly stated, we make no representations or warranties, express or implied, concerning the equipment or its components, including without limitation any representations or warranties concerning functionality, conformity or compliance with any safety standard or requirement of any applicable authority or regulatory body, fitness for any particular purpose, or merchantability. You are strongly advised to perform your own detailed inspection of the equipment prior to bidding.

Functions

Equipment is not tested under load. We make no representation or warranty that equipment is operating in accordance with manufacturers' specifications. No inspection has been performed with respect to any functionality aspect other than those expressly included herein. Only select photos have been provided for individual undercarriage components, and may not be indicative of the condition of the entire undercarriage as a whole.

Dimensions

Measurements are given as an estimate only. Actual loaded dimensions may vary based on truck/trailer height and the loaded machine configuration/position. It is the buyer's responsibility to measure all loads before leaving our auction site to ensure the load is safe for transport. All measurements should be verified by the buyer. DO NOT rely on these measurements for transportation purposes