





VAN HOOOL

of Ohio  
TIS-458





















A central digital display with green text and icons. It shows 'DEF 2' with a DEF icon and '100'. To the right, it shows '61' and '8 OF'. Below this is a gear shift diagram with three gears labeled ①, ②, and ③. At the bottom right, it shows '0.3' and 'MPG'.



VDO

Press Brake Pedal  
BEFORE  
Selecting Gear

OFF

MASTER

IGNITION

START

←CHASSIS

NN

→FOUR

R

MODE

N



D



AT/ICE  
245885.1  
Miles to Empty 100 miles



**REI EC-750**

MUTE

DRIVER

PASSENGER

RAD AUX

VID RAD AUX

LEVEL

MENU



**REI EVR-6500D**

AM/FM/DVD/MP3/BT

SRC

SEEK

SEEK

CALL

Radio

03 13AM

FM2-2 MHZ

97.90

SEEK BT

93.90 96.70 104.90 106.90





DRIVER PASSENGER

RAD AUX VID RAD AUX

Volume 0.0 97.90 MHz

LEVEL

V MENU ^

▶ ■

◀▶

REI EVR-6500D AM/FM/DVD/MP3/BT

Radio 03:13AM ↻

FM2-2 97.90 MHZ

SEEK BT

93.90 96.70 106.90 107.90 97.5

ST LOC AS/PS SCAN AM FM SEEK MANUAL

MIC IN RESET

USE ULTRA LOW-SULFUR DIESEL FUEL ONLY

10

Red button

Green button

Buttons: [Star], [EVS], [2x], [Power]



CAUTION HEIGHT  
11ft 6inch II

























- Stop  
- Follow the













VANHOOL










72203 05 27  
265 007



WARNING!

causes  
fire,  
explosion,  
and other  
damages.





216 US gal.

Print Date: May 11, 2021 12:46 pm

|              |                   |
|--------------|-------------------|
| VIN          | YE2XC81B6H3049420 |
| Vehicle Make | Van Hool          |
| Model        | CX                |
| Model Year   | 2017              |

### Vehicle Components

| Component                     | Description                           | Serial Number    | Software Version   | Network                        |
|-------------------------------|---------------------------------------|------------------|--|--------------------------------|
| Engine/CPC                    | Detroit DD13 Engine/CPC               | S0458512         | App_040B   | J1939<br>(High)/15765<br>(CAN) |
| Transmission                  | Allison 3000/4000 5th Gen             | BK6884A382700241 | W16BCDPC_5J6996<br>B C16200106B59K                                   | J1939<br>(High)/15765<br>(CAN) |
| Brakes                        | WABCO E-Series ABS E8 6S/6M           | 004005024471     | 2460030622<br>1.83.1.21  | J1939<br>(High)/15765<br>(CAN) |
| Aftertreatment Control Module | Detroit Aftertreatment Control Module | N/A              | acm_0x022A   | J1939<br>(High)/15765<br>(CAN) |
| Motor Control Module          | Detroit Motor Control Module          | N/A              | mcm_0x06D1   | J1939<br>(High)/15765<br>(CAN) |
| Tire Pressure Controller      | Bendix SmartTire™ Standalone TPMS     | N/A              | SMTR APP248.0053<br>V2.20 BLD248.0063<br>V1.06 APP248.0074<br>V03.13 | J1939 (High)                   |
| In-Cab Display Device         | Bendix SmartTire™ TPMS In-Cab Display | 1618183          | SMTR K098857 V1.0  | J1939 (High)                   |

Print Date: May 11, 2021 12:46 pm

### Vehicle Key Data Points

| Parameter Description           | Value         | Parameter Description | Value         |
|---------------------------------|---------------|-----------------------|---------------|
| Avg Fuel Econ                   | 6.90 mpg      | Idle Fuel Used        | 4,632.30 gal  |
| DPF Soot Level                  | Low           | Total Idle Hrs        | 4,246.50 hrs  |
| DPF Derate                      | Low           | Idle Shutdown         | 5.00 min      |
| Total Engine Hrs                | 9,264.10 hrs  | Battery Potential     | 14.10 volts   |
| Cruise Spd Limit                | 71.00 mph     | Road Speed Limit      | 71.00 mph     |
| Malfunction Indicator Lamp      | On            | Red Stop Lamp         | On            |
| Amber Warning Lamp              | Off           | Protect Lamp          | Off           |
| Parking Brake Switch            | On            | DPF Lamp Command      | Off           |
| Exhaust System High Temperature | Off           | ABS Control Status    | Not Available |
| ABS Control Status, Trailer     | Not Available | Engine Speed          | 593 rpm       |
| Odometer                        | 242,995.37 mi | Engine Odometer       | 242,995.37 mi |
| Instrument Cluster Odometer     | Not Available | Fuel                  | 68%           |
| Washer Fluid                    | Normal        | Coolant               | Normal        |
| Diesel Exhaust Fluid            | Normal        |                       |               |

### Vehicle Issues

 5 Active Fault(s) Present

### Faults

| Status            | Component                     | Description   | Lookup Code | FMI | Count |
|-------------------|-------------------------------|---|-------------|-----|-------|
| Active            | Tire Pressure Controller      | Tire Pressure Second Level Pressure Low                                 | SPN 241     | 1   | N/A   |
| Active            | Tire Pressure Controller      | Tire Pressure First Level Pressure Low                                  | SPN 241     | 18  | N/A   |
| Active            | Tire Pressure Controller      | No Reception For Tire Sensor  | SPN 929     | 12  | N/A   |
| Active, Emissions | Aftertreatment Control Module | Selective Catalyst Reduction (SCR) Inlet Nox Sensor Failure to Activate | SPN 3223    | 7   | 4     |
| Active, Emissions | Aftertreatment Control Module | Selective Catalyst Reduction Inlet NOx Sensor Circuit Failed Open       | SPN 520363  | 5   | 5     |
| Inactive          | Aftertreatment Control Module | Selective Catalyst Reduction Inlet NOx Sensor Drift                     | SPN 3216    | 10  | 100   |
| Inactive          | Aftertreatment Control Module | Diesel Particular Filter (DPF) hydrocarbon (HC) absorption warning      | SPN 5443    | 15  | 15    |

Print Date: May 11, 2021 12:46 pm

| Status   | Component            | Description  | Lookup Code | FMI | Count |
|----------|----------------------|--|-------------|-----|-------|
| Inactive | Brakes               | Excessive Slip - One axle is detected to be rotating much faster than another. This fault is common if a vehicle has been on a dyno and detection is not disabled via diagnostic command. It is also possible that there are excessive sensor air gaps on multiple wheel ends (Flash Code 7-1) | SPN 629     | 8   | 1     |
| Inactive | Engine/CPC           | Coolant Level Very Low   | SPN 111     | 1   | 2     |
| Inactive | Motor Control Module | Battery Voltage Low  | SPN 168     | 1   | 1     |
| inactive | Motor Control Module | MCM Internal Temperature Voltage Failed Low  | SPN 521005  | 4   | 10    |





Acquiring vehicle information

| Status                 | Component                     | Description   | Lookup Code | FMI | Count |
|------------------------|-------------------------------|---|-------------|-----|-------|
| <a href="#">Action</a> | Tire Pressure Controller      | Tire Pressure Second Level Pressure Low   | SPN 241     | 1   | N/A   |
| <a href="#">Action</a> | Tire Pressure Controller      | Tire Pressure First Level Pressure Low  | SPN 241     | 10  | N/A   |
| <a href="#">Action</a> | Tire Pressure Controller      | No Reception For Tire Sensor  | SPN 929     | 12  | N/A   |
| <a href="#">Action</a> | Aftertreatment Control Module | Selective Catalyst Reduction (SCR) Inlet <a href="#">NOx</a> Sensor Failure to Activate | SPN 3223    | 2   | 4     |
| <a href="#">Action</a> | Aftertreatment Control Module | Selective Catalyst Reduction Inlet <a href="#">NOx</a> Sensor Circuit Failed Open       | SPN 520363  | 2   | 5     |

2017 Van Hool Vehicle

- Detroit DD13 Engine/CPC
- Allison 3000/4000 5th Gen
- WABCO E Series ABS E8 6S/GM
- Bendix SmartTire™ Standalone TPMS
- Bendix SmartTire™ TPMS In-Cab Display
- Communications Unit Cellular
- Detroit Aftertreatment Control Module
- Detroit Motor Control Module
- Retarder - Engine

Vehicle Information  
 VIN: YE2KCS1BH304928  
 Manufacturer: Van Hool  
 Model: CX  
 Model Year: 2017

Clear Faults  
 Click to Launch Freeze Frame

Malfunction Indicator  
 Red Stop  
 Amber Warning  
 Protect

Road Speed Limit

71 mph

Cruise Spd Limit

71 mph

Idle Shutdown

5 mins

Battery Potential

14.1 v

Total Engine Hrs

92639 hrs

Odometer

242995.4 mi

Engine Speed

Avg Fuel Econ

6.9 mpg

View Convertible Flights

Total Mile Hrs

4246.3 hrs

Idle Fuel Used

4632.3 gal

DPF Soot Level

Low

DPF Degrate

Low

Navigation icons: Exit, Disconnected, Home, Inspections & Reports, Fault Guidance, Next Step Repair, Data Monitor, Revs, Diagnostics, Aftertreatment Diagnostics, Refresh, Status Warranty, Application Portal, Education Portal, Application Settings, Help.



Acquiring vehicle information

| Status | Component                | Description                             | Lookup Code | FMI | Count |
|--------|--------------------------|---|-------------|-----|-------|
| Action | Tire Pressure Controller | Tire Pressure Second Level Pressure Low | SPN 241     | 1   | N/A   |
| Action | Tire Pressure Controller | Tire Pressure First Level Pressure Low  | SPN 241     | 10  | N/A   |
| Action | Tire Pressure Controller | No Resolution For Tire Sensor           | SPN 929     | 12  | N/A   |

**Consumable Fluid Levels**

|      |              |         |                      |
|------|--------------|---------|----------------------|
| Fuel | Washer Fluid | Coolant | Diesel Exhaust Fluid |
| 68%  | Normal       | Normal  | Normal               |

Please verify actual levels.

Close

2017 Van Hool Vehicle

- Detroit DD13 Engine/CFC
- Allison 3000/4000 5th Gen
- WABCO E-Series ABS EBS
- Bendix SmartTire™ Standard
- Bendix SmartTire™ TPMS
- Communications Unit, Co
- Detroit Aftertreatment Con
- Detroit Motor Control Mod
- Retarder - Engine

Vehicle Information

VIN: YE2KCS1BH304928  
 Manufacturer: Van Hool  
 Model: CX  
 Model Year: 2017

Total Engine Hrs  
**92639** hrs

Odometer  
**2429954** mi



Total Idle Hrs  
**4246.3** hrs

Idle Fuel Used  
**4632.3** gal

Legend for fluid levels:

- Red Stop
- Amber Warning
- Protect

DPF Derate

Low

View Consumable Fluids

### Data Monitor

Power Diagram | Faults | Temperature | Switches | Status Indicators | Pressure | Percent | Electrical | Data Groups

Compressors: All |  | Search

| Selected                 | Description        | Parameter Value | Units | Component            | Network Speed |
|--------------------------|--------------------|-----------------|-------|----------------------|---------------|
| <input type="checkbox"/> | Rated Engine Power | 160.58          | hp    | Engine-CPIC          | 31839 (High)  |
| <input type="checkbox"/> | Rated Engine Power | Not Available   | hp    | Motor Control Module | 31829 (High)  |

Close

---

Clear Selection | Graph | Add to Data Group | Connector Info | Bus Statistics | FMI Assistance | Fault Status Assistance | Industry Terms | Electrical Tips | Regen Zone Info | EPA Assistance

| Bus Code | FMI | Count |
|----------|-----|-------|
| 1        | 1   | N/A   |
| 2        | 10  | N/A   |
| 3        | 12  | N/A   |
| 203      | 2   | 4     |
| 0363     | 2   | 5     |

DFF Denote

**Low**

View Contaminable Fluids

Oil Life Hrs

**46.3 hrs**

Fuel Used

**32.3 gal**



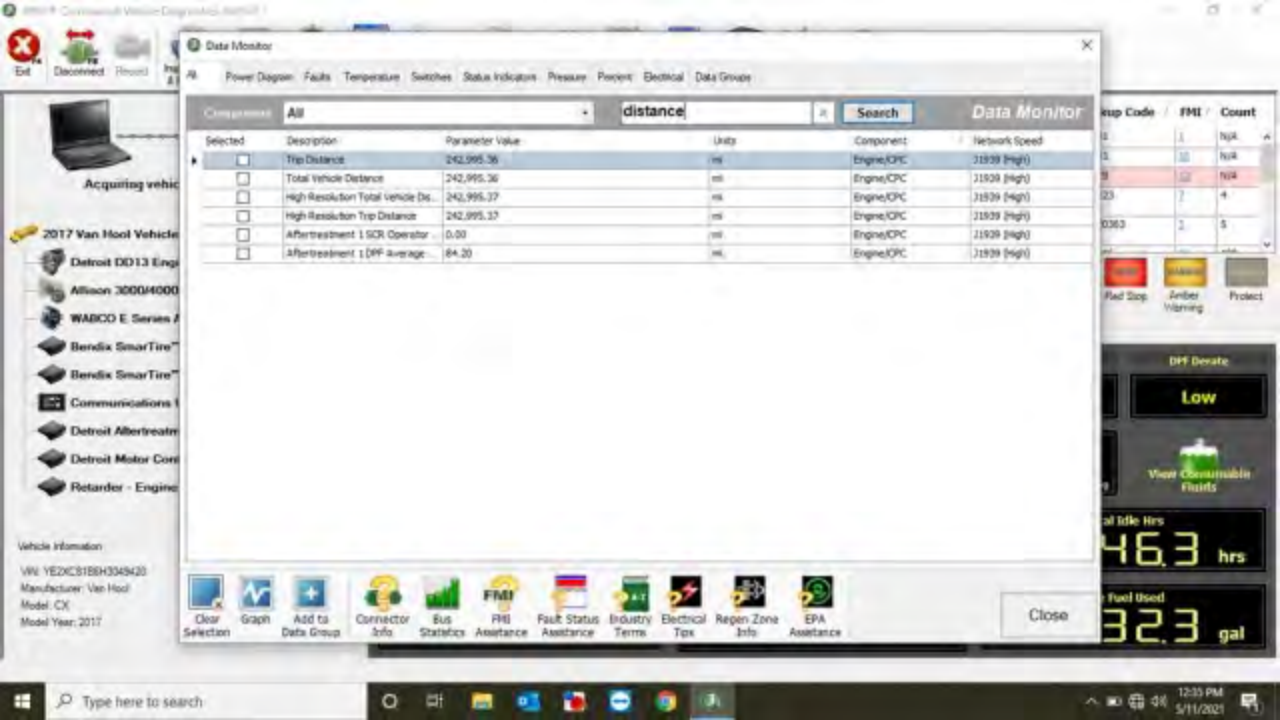
Acquiring vehicle

2017 Van Hool Vehicle

- Detroit DD13 Engine
- Allison 3000/4000
- WABCO E-Series A
- Bendix SmartTire
- Bendix SmartTire
- Communications 1
- Detroit Aftertreatment
- Detroit Motor Control
- Retarder - Engine

Vehicle Information

VIN: YE2KCS18BH304N20  
 Manufacturer: Van Hool  
 Model: CX  
 Model Year: 2017



Data Monitor

Power Diagon Faults Temperature Switches Status Indicators Pressure Percent Electrical Data Groups

Compressors: All | distance | Search

| Selected                 | Description                          | Parameter Value | Units | Component  | Network Speed |
|--------------------------|--------------------------------------|-----------------|-------|------------|---------------|
| <input type="checkbox"/> | Trip Distance                        | 242,995.36      | mi    | Engine/CPC | 31839 (High)  |
| <input type="checkbox"/> | Total Vehicle Distance               | 242,995.36      | mi    | Engine/CPC | 31839 (High)  |
| <input type="checkbox"/> | High Resolution Total vehicle Dis... | 242,995.37      | mi    | Engine/CPC | 31839 (High)  |
| <input type="checkbox"/> | High Resolution Trip Distance        | 242,995.37      | mi    | Engine/CPC | 31839 (High)  |
| <input type="checkbox"/> | Aftertreatment 1 SCR Operator        | 0.00            | mi    | Engine/CPC | 31839 (High)  |
| <input type="checkbox"/> | Aftertreatment 1 DPF Average         | 84.20           | mi    | Engine/CPC | 31839 (High)  |

- Clear Selection
- Graph
- Add to Data Group
- Connector Info
- Bus Statistics
- FMI Assistance
- Fault Status Assistance
- Industry Terms
- Electrical Tips
- Regen Zone Info
- EPA Assistance

Close

- Acquiring vehicle
- 2017 Van Hool Vehicle
- Detroit DD13 Engine
- Allison 3000/4000
- WABCO E-Series A
- Bendix SmartTire
- Bendix SmartTire
- Communications 1
- Detroit Aftertreatment
- Detroit Motor Control
- Retarder - Engine

Vehicle Information  
 VIN: YE2KCB18H304920  
 Manufacturer: Van Hool  
 Model: CX  
 Model Year: 2017

| Equip Code | FMI | Count |
|------------|-----|-------|
| 1          | 1   | N/A   |
| 1          | 10  | N/A   |
| 9          | 12  | N/A   |
| 23         | 2   | 4     |
| 0363       | 2   | 5     |

DPF Denote

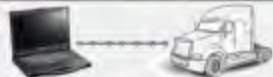
**Low**

View Contaminable Fluids

al title hrs  
**46.3** hrs

Fuel Used  
**32.3** gal





Acquiring vehicle information

2017 Van Hool Vehicle

- Detroit DD13 Engine/CPC
- Allison 3000/4000 5th Gen
- WABCO E Series ABS E8 6S/GM
- Bendix SmartTire™ Standalone TPMS
- Bendix SmartTire™ TPMS In-Cab Display
- Communications Unit Cellular
- Detroit Aftertreatment Control Module
- Detroit Motor Control Module
- Retarder - Engine

Vehicle Information

VIN: YE2KCS1BH304928  
 Manufacturer: Van Hool  
 Model: CX  
 Model Year: 2017

| Status                 | Component                     | Description   | Lookup Code | FMI | Count |
|------------------------|-------------------------------|---|-------------|-----|-------|
| <a href="#">Action</a> | Tire Pressure Controller      | Tire Pressure Second Level Pressure Low   | SPN 241     | 1   | N/A   |
| <a href="#">Action</a> | Tire Pressure Controller      | Tire Pressure First Level Pressure Low  | SPN 241     | 10  | N/A   |
| <a href="#">Action</a> | Tire Pressure Controller      | No Reception For Tire Sensor  | SPN 929     | 12  | N/A   |
| <a href="#">Action</a> | Aftertreatment Control Module | Selective Catalyst Reduction (SCR) Inlet <a href="#">NOx</a> Sensor Failure to Activate | SPN 3223    | 2   | 4     |
| <a href="#">Action</a> | Aftertreatment Control Module | Selective Catalyst Reduction Inlet <a href="#">NOx</a> Sensor Circuit Failed Open       | SPN 520363  | 2   | 5     |



**Road Speed Limit**  
71 mph

**Idle Shutdown**  
5 min

**Total Engine Hrs**  
92639 hrs

**Odometer**  
2429954 mi

**Cruise Spd Limit**  
71 mph

**Battery Potential**  
14.1 v

**Engine Speed**

**DEF Soot Level**  
Low

**Avg Fuel Econ**  
6.9 mpg

**Total Idle Hrs**  
4246.4 hrs

**Idle Fuel Used**  
4632.3 gal

**DEF Denate**  
Low

**View Convertible Fluids**

AN HOOL N.V. Lier 2500 BELGIUM

Year of construction: 03/17

54.000 Lb

|                   | GAWR      | TIRE SIZE<br>LOAD RANGE | RIM SIZE  | COLD INFLATION<br>PRESSURE |
|-------------------|-----------|-------------------------|-----------|----------------------------|
| Front             | 17.640 Lb | 315/80R22,5 - L         | 9,00x22,5 | 125 Psi (Single)           |
| Rear Intermediate | 27.575 Lb | 315/80R22,5 - L         | 9,00x22,5 | 110 Psi (Dual)             |
| Rear              | 17.640 Lb | 315/80R22,5 - L         | 9,00x22,5 | 125 Psi (Single)           |

This vehicle conforms to all applicable U.S. Federal Motor Vehicle Safety Standards in effect on the date of manufacture shown above.

GVWR and GAWR are based on ORIGINAL equipment. Any change may affect vehicle capacities. See Owner's Manual for other tire and capacity information.

Vehicle identification number : YE2XC81B6H3049420

Classification : BUS

PRODUCTION NUMBER

N<sup>o</sup>

49420









VAN HOOOL

TEXAS  
T85-456







XXXXXX

vanpool

1000









245885.1

8578

vmin 15 mph vmax 80 mph

miles 80  
mph





















**DETROIT**

**L2013**

**IMPORTANT ENGINE INFORMATION**

FUEL RATE AT 800: HP: 311.1 HRS/STROKE  
INITIAL INJECTION TIMING: 9.8 DEG BTC  
ENGINE FAMILY: 600X/112.8FED DISP: 12.8 LITERS  
UNIT: 4719/150458512 MODEL: D013  
R0V HP: 525.8 1525 RPM MIN IDLE: 600 RPM  
MFG. DATE: OCT 2016 MIN INTAKE: 0.4 MM  
VALVE LASH: EXHAUST: 0.6 MM - E55 EXEMPT  
EMISSION CONTROL SYSTEMS: D01, TC, DCL, ECH  
FOR USE IN VOCATIONAL OR TRACTOR VEHICLES

THIS ENGINE CONFORMS TO U.S. EPA AND  
CALIFORNIA REGULATIONS APPLICABLE TO 2016  
MODEL YEAR HEAVY DUTY DIESEL CYCLE  
ENGINES. THIS ENGINE HAS A PRIMARY SERVICE  
APPLICATION AS A HEAVY HEAVY DUTY ENGINE.  
THIS ENGINE IS NOT CERTIFIED FOR USE IN AN  
URBAN BUS AS DEFINED AT 48 CFR 86.093-2.  
SALE OF THIS ENGINE FOR USE IN AN URBAN BUS  
IS A VIOLATION OF FEDERAL LAW UNDER THE  
CLEAN AIR ACT. THIS ENGINE IS CERTIFIED TO  
OPERATE ON ULTRA LOW SULFUR DIESEL FUEL.

**DETROIT**  
CUSTOMER SERVICE  
1-800-922-726  
44-102-355-0510  
ABSTRACT: 44-102-355-0510  
SUPPORT/INQUIRY: 1-800-903-7100  
USA / CANADA: 1-800-903-7100  
MEXICO: 01-800-903-7100





ANTHOL

COOLANT

