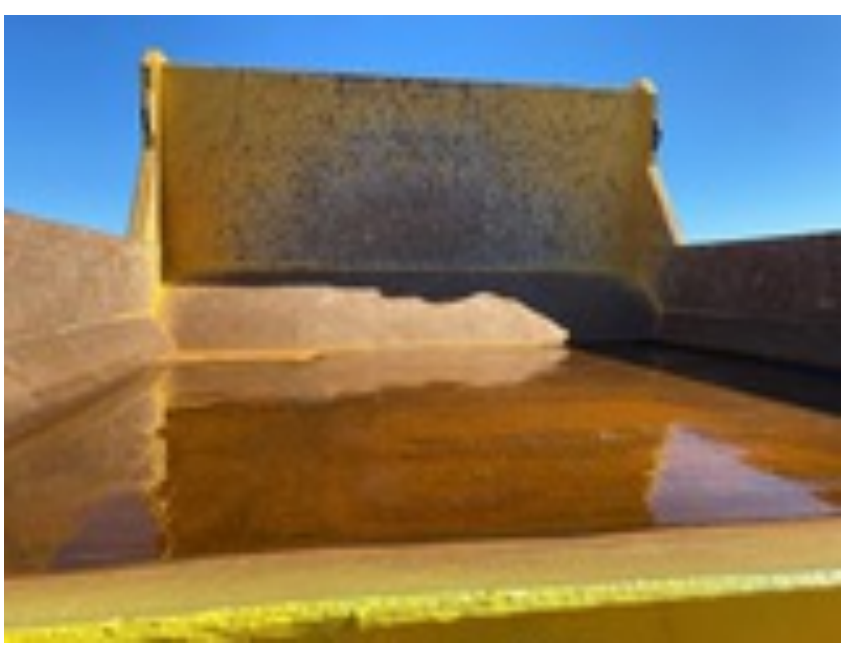


2020 Terramac RT14R

Unit: 14RJ00169



VIEW ALL PHOTOS

Download Reconditioning Printout

UNIT SPECS

Customer Wells Fargo (MS)

LOCATION

WELLS FARGO (MS)  
PLEASE CALL PICKUP SUPPORT FOR LOCATION INFORMATION  
LONDELL, MO 63060

FULL SPECS

RECONDITIONING

Chassis

Bed Body	Rating: Good
Bed Liner	Rating: Good
Hinge Points	Rating: Good
Limited Function Check (Chassis) The main chassis components were operational in a limited check; The main chassis components functioned during a limited check.	
Frame Condition	Rating: Good
Brake Type Hydrostatic	
Park Brake	Rating: Good
Limited Function Check - Brakes The brake system functioned, stopping and holding the machine.	

Control Station

Steering Controls	Rating: Good
Hydraulic Controls	Rating: Good
Dash Console	Rating: Good
Engine Oil Pressure The gauge registers in the operating range.	
Warning Lights Operational	
Gauges Operational	
Hour Meter (Pre-inspection) 1538.8 hrs	
Hour Meter 1539 hrs	
Air Conditioner The ambient temperature is too cold to check	
Heater Operational	
Limited Function Check (Control Station) The main components are in place and operational as noted.	
Control Station Enclosed Cab, Air Conditioner	

Drivetrain

Drive Motors Cannot obtain photo	Rating: Good
Final Drives	Rating: Good
Limited Function Check (Drivetrain-Track) The drivetrain was operational without a load.	

Engine

A/C Compressor In place; ambient temperature too cold to check operation	
Starter Operational	
Radiator	Rating: Good
Oil Leaks No dripping leaks	
Fuel Leaks No dripping leaks	
Cooling System Leaks No dripping leaks	
Limited Function Check (Engine) After jump starting, the engine ran. The engine would not re-start after shutting down without jump starting.	
Emissions Status 2019 US EPA Label	
Engine Cummins QSL9 320 4 Cylinder 190 hp 8.9 L Diesel Engine, Requires Diesel Exhaust Fluid	

General Appearance

Year 2020	
Make Terramac	
Model RT14R	
Serial Number / VIN 14RJ00169	
CE Mark No CE mark found	
Pre-Operational Checks Confirm Fluids Checked: Engine Coolant, Confirm Fluids Checked: Engine(s) Oil, Confirm Fluids Checked: Hydraulic Fluid, Confirm Fluids Checked: Fuel Level, N/A: Transmission Fluid	
Glass No visible damage	
Exterior Lights Operational	
Cab/Canopy Overhead Structural Framework No visible damage	
Condition Fair	

Hydraulics

Pumps (Hydraulics) Cannot access pump to photo	
Hydraulic Motors Seepage	Rating: Good
Valves Seepage	Rating: Good
Hydraulic Tank	Rating: Good
Cylinder(s)	Rating: Good
Cylinder Pins And Bushings Seepage	Rating: Good
Limited Function Check (Hydraulics) The hydraulic system was operational.	

Logistics Information

Shipping Dimensions 20 ft 0 in Long x 10 ft 0 in Wide x 11 ft 0 in Tall	
General Shipping Information Yes: Does the Unit Run? Yes: Is self propelled, does the unit travel? Yes: Is the unit wider than 8'6"? Yes: Inflated Tires - item can roll? No: Is the unit taller than 12'? No: Noticeable fluid leaks?	
Road Related Shipping Info Yes: Lights Operate? Yes: Brakes Operate?	

Safety

Travel Alarm Operational	
Horn Operational	
Seat Belts Operational	
Safety Lock Out/Stop Operational	
Current Safety Manual No	
Current Operator/Maintenance Manual Yes	

Rubber Track Undercarriage

Roller Frames	Rating: Good
Grouser Height Measurement Left side: 40 mm, Right side: 40 mm	
Rubber Belt Drive Lugs Normal wear	
Track Tensioners Operational	

Model Description

Body Details Rotating	
--------------------------	--

Body Configuration

Body Configuration 11 ft 7 in Long x 2 ft 0 in High Swivel Dump Body	
---	--