

ITEM DETAILS - 2015 Madill 2250C

Wednesday, September 09, 2020

DETAILED EQUIPMENT INFORMATION

A qualified Ritchie Bros. employee collected detailed equipment information and performed functional tests on the key components of this asset.

General Description

Inspector Name: AG 8/7
 TM Name: EVA.SMOL
 Sale Number: 1000120
 Sale Location: IC - Grande Prairie, AB, CAN
 Sale Date: Dec 31, 2020
 Owner Code: C75
 Schedule A: 884
 Schedule A Modifier: 0
 Sequence Number: 0
 Lot: 884
 Title In Hand: No
 In Yard: Yes
 In Yard Date: 2020-08-05
 Warranty Eligible: No
 Year: 2015
 Manufacturer: Madill

Model: 2250C
 Asset Type: Feller Buncher
 Asset Type Free Form: Feller Buncher
 Serial Number or VIN: 2250C250
 Serial Number Checked: True
 Unused: No
 Glidered: No
 CE: No
 Condition

Tires / U/C %: 30
 Hrs/Mil/kms: 4563 hrs
 Overall Condition for Age: Fair

R&R Required: No
 Owner Book Notes: 20AP047
 Comes With: 24 in. head, A/C



Operator Station

A/C: True



Engine

EPA: No



Front Attachment

Sawhead

Size: 24 in.



Boom Operation

No data.

Tracked Undercarriage

Pad Size: 28 in.
Grousers: SBG



Body Details

No data.

Undercarriage

No data.

Accessories

No data.

Functionality Tests

Starts: Yes
Drives Forward: Yes
Drives Backward: Yes

Drives Right: Yes
Drives Left: Yes
Brake Pedal Functions: Yes
Front Hydraulics Function: Yes

Dimensions

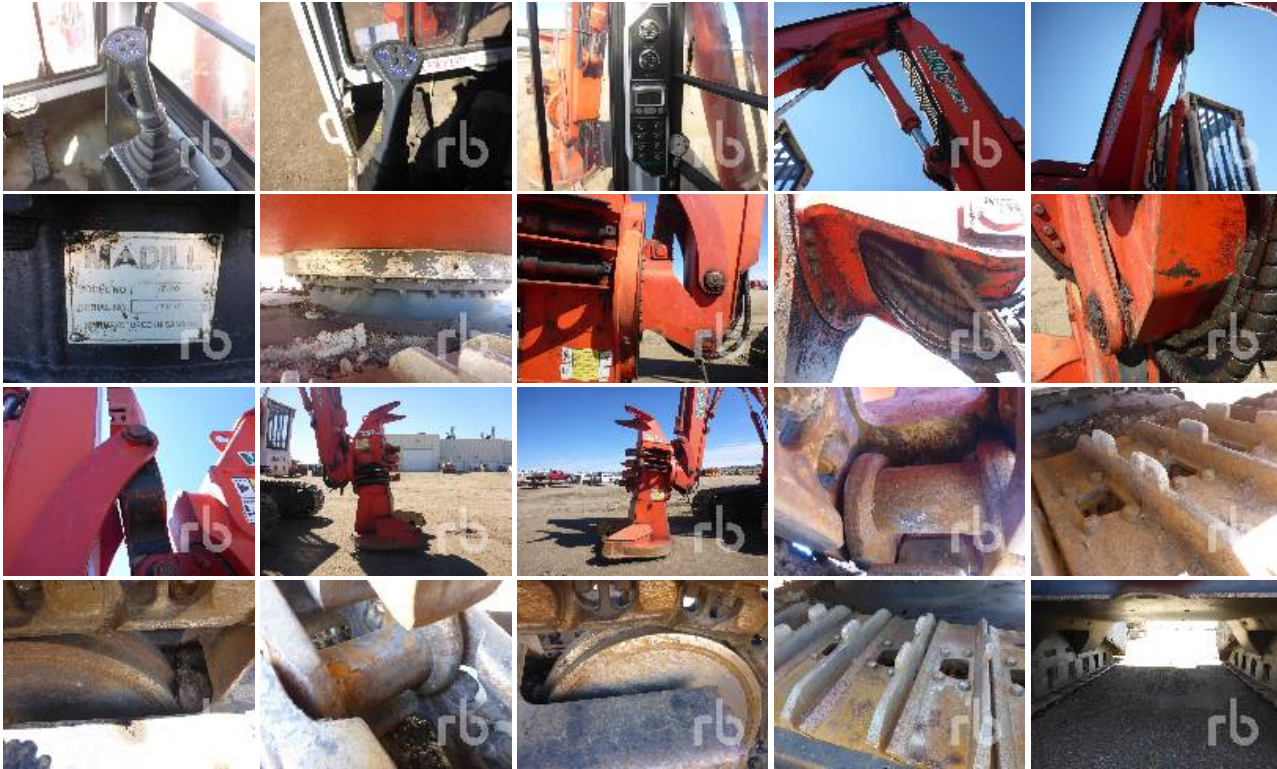
No data.

Supporting Documents

No data.

R&R

No data.



DISCLAIMER

General

The Detailed Equipment Information is limited in scope, and Ritchie Bros. Auctioneers has not inspected any aspects or components of the equipment other than those expressly set forth herein. Unless expressly stated, we make no representations or warranties, express or implied, concerning the equipment or its components, including without limitation any representations or warranties concerning functionality, conformity or compliance with any safety standard or requirement of any applicable authority or regulatory body, fitness for any particular purpose, or merchantability. You are strongly advised to perform your own detailed inspection of the equipment prior to bidding.

Functions

Equipment is not tested under load. We make no representation or warranty that equipment is operating in accordance with manufacturers' specifications. No inspection has been performed with respect to any functionality aspect other than those expressly included herein. Only select photos have been provided for individual undercarriage components, and may not be indicative of the condition of the entire undercarriage as a whole.

Dimensions

Measurements are given as an estimate only. Actual loaded dimensions may vary based on truck/trailer height and the loaded machine configuration/position. It is the buyer's responsibility to measure all loads before leaving our auction site to ensure the load is safe for transport. All measurements should be verified by the buyer. DO NOT rely on these measurements for transportation purposes