

BOBCAT EQUIPMENT CONDITION REPORT

For more information, visit:
wellsfargo.com/equipseller



Commerical Vehicle Inspection Group
Truck, Tractor, Trailer, and Equipment
Inspections throughout North America
203-628-4325 info@cvig.com

Make:	Bobcat	Type:	Compact Track Loader	Inspector:	GP
Model:	T770	Hours:	1526	Inspection Date:	11/7/2024
SN:	AT6330970	Year:	2021		

SPECIFICATIONS

ROPS:	Yes	Hours:	1526				
Enclosed Cab:	No	Cab Heat:	No	Cab A/C:	No	Controls:	Selectable Joystick Controls
Attachment on Machine:	80" Bucket						
Additional Attachments:	N/A						
2-Speed:	Yes	Engine MFR:	DOOSAN	Tracks			
High Flow Hydraulics - Sticker:	Yes	Power Bob-Tach:	Yes	Keyless Start:	No		
Backup Camera:	No	Ride Control:	No	Deluxe Instrumentation:	No		
Hydraulic X-Change:	No						
Comments and Defects:	WARNING LIGHT DISPLAYED,						

BOBCAT EQUIPMENT CONDITION REPORT

For more information, visit:
wellsfargo.com/equipmentseller



Commerical Vehicle Inspection Group
Truck, Tractor, Trailer, and Equipment
Inspections throughout North America
203-628-4325 info@cvigna.com

Tire Fault Legend			
C - Cut	D - Dry	F - Flat	M - Mismatched Tread / Casings
WD - Wheel Damage			

TRACKS	
Make: NA Part #: NA Measure: 28 / 32 Condition: FAIR Tread Remaining: Over 50% Fault: C	Make: NA Part #: NA Measure: 27 / 32 Condition: FAIR Tread Remaining: Over 50% Fault: C

BOBCAT EQUIPMENT CONDITION REPORT

For more information, visit:
wellsfargo.com/equipseller



Commerical Vehicle Inspection Group
Truck, Tractor, Trailer, and Equipment
Inspections throughout North America
203-628-4325 info@cvigna.com

CONDITION REPORT

	Check	Comments / Deficiencies
X	Visual Inspection	INTERIOR DIRTY
✓	Operational Test	PASSED - MOVED FORWARD/BACK WARD - LIFTED UP AND DOWN
✓	Lift Cylinders	NO LEAKS
✓	Tilt Cylinders	NO LEAKS
✓	Boom Arms Operations	WORKING
✓	Seat	GOOD CONDITION
X	Tailgate Lights	LEFT REAR LIGHT INOP
✓	Working Lights	GOOD CONDITION
N/A	Front Door	
✓	Rear and Top Window	NO DAMAGES
N/A	Side Glass Complete	
✓	Boom Arms Damages	NO DAMAGES
✓	Rear Door	OPENS AND CLOSES AND STAYS CLOSED
✓	Mufflers	GOOD CONDITION
✓	ROPS Condition	GOOD CONDITION
✓	Power Bob-Tach Condition	OPERATIONAL
N/A	Cab A-C Condition	
N/A	Cab Heat Condition	
✓	Intake Screen	GOOD CONDITION
✓	Eng. Compartment	
N/A	Hydraulic X-Change Condition	
X	Customer Decals Visible on Unit	YES
X	Error Codes	WARNING LIGHT PRESENT - DIAGNOSE
X	Right Track Faults	TRACK IS CUT
X	Left Track Faults	TRACK IS CUT
X	Condition Report	LEFT JOY STICK WORN - TAKE A LOT OF MOTION TO CHANGE DIRECTIONS
X	Condition Report	HIGH FLOW - SELECTABLE DECALS WORN - NOT LEGIBLE

PHOTOS



Front Left



Front Right



Rear



Seating / Interior

PHOTOS



PHOTOS



PHOTOS



PHOTOS



PHOTOS



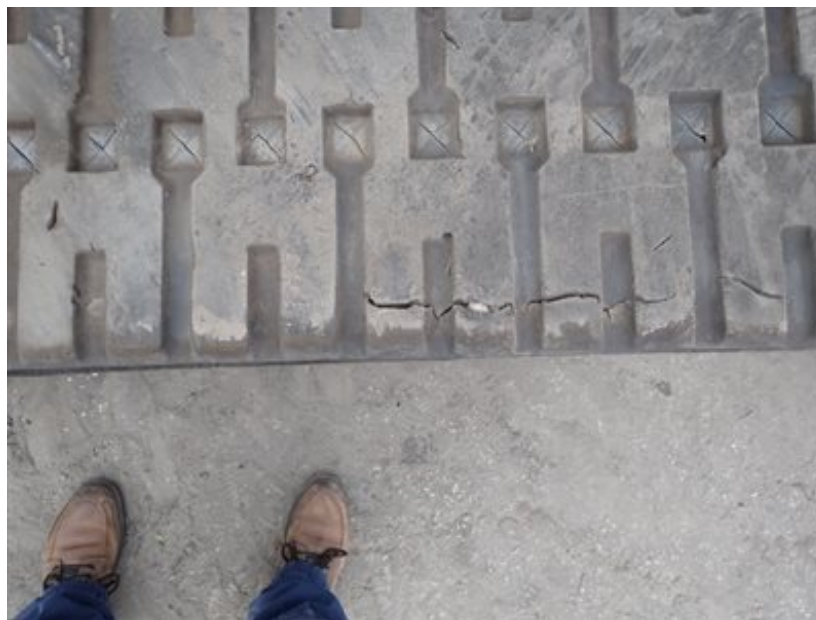
PHOTOS



PHOTOS



PHOTOS



PHOTOS

