

ITEM DETAILS - 2011 John Deere 2154D

Tuesday, October 13, 2020

DETAILED EQUIPMENT INFORMATION

A qualified Ritchie Bros. employee collected detailed equipment information and performed functional tests on the key components of this asset.

General Description

Inspector Name: TD 09/16
TM Name: EVA.SMOL
Sale Number: 1012155
Sale Location: IC - Chilliwack, BC, CAN
Sale Date: Dec 31, 2020
Owner Code: C75
Schedule A: 20
Schedule A Modifier: 0
Sequence Number: 0
Lot: 359
Title In Hand: No
In Yard: Yes
In Yard Date: 2020-09-09
Warranty Eligible: No
Year: 2011
Manufacturer: John Deere
Model: 2154D

Type: Short Wood
Asset Type: Log Loader
Asset Type Free Form: Log Loader
Serial Number or VIN: 1FF2154DVB0210313
Serial Number Checked: True
Unused: No
Glidered: No
CE: No
Condition

Tires / U/C %: 15
Hrs/Mil/kms: 13773 hrs
Overall Condition for Age: Fair

R&R Required: No
Owner Book Notes: redeployment as per Eva, elite bailiff 604 539 9900
Comes With: Brandt grapple, A/C hyd tilt rear entry forestry cab
Model Description: Short Wood



Operator Station

Cab Details

A/C: True
Tilt: hyd tilt
Rear Entry: True
Forestry: True



Lower Engine

No data.

Engine

EPA: No



Front Attachment

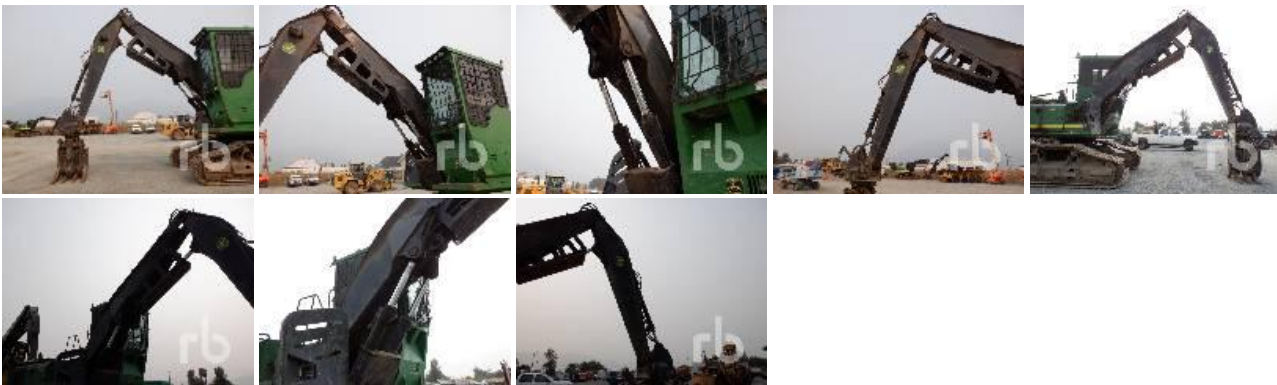
Grapple Details

Manufacturer: Brandt



Boom Operation

No data.



Body Details

No data.



Drive Train

No data.

Tracked Undercarriage

Pad Size: 27.5 in.

Grousers: DBG



Undercarriage

No data.

Accessories

No data.

Functionality Tests

Starts: Yes

Drives Forward: Yes

Drives Backward: Yes

Drives Right: Yes

Drives Left: Yes

Front Hydraulics Function: Yes

Dimensions

No data.

Supporting Documents

No data.

R&R

No data.

DISCLAIMER

General

The Detailed Equipment Information is limited in scope, and Ritchie Bros. Auctioneers has not inspected any aspects or components of the equipment other than those expressly set forth herein. Unless expressly stated, we make no representations or warranties, express or implied, concerning the equipment or its components, including without limitation any representations or warranties concerning functionality, conformity or compliance with any safety standard or requirement of any applicable authority or regulatory body, fitness for any particular purpose, or merchantability. You are strongly advised to perform your own detailed inspection of the equipment prior to bidding.

Functions

Equipment is not tested under load. We make no representation or warranty that equipment is operating in accordance with manufacturers' specifications. No inspection has been performed with respect to any functionality aspect other than those expressly included herein. Only select photos have been provided for individual undercarriage components, and may not be indicative of the condition of the entire undercarriage as a whole.

Dimensions

Measurements are given as an estimate only. Actual loaded dimensions may vary based on truck/trailer height and the loaded machine configuration/position. It is the buyer's responsibility to measure all loads before leaving our auction site to ensure the load is safe for transport. All measurements should be verified by the buyer. DO NOT rely on these measurements for transportation purposes