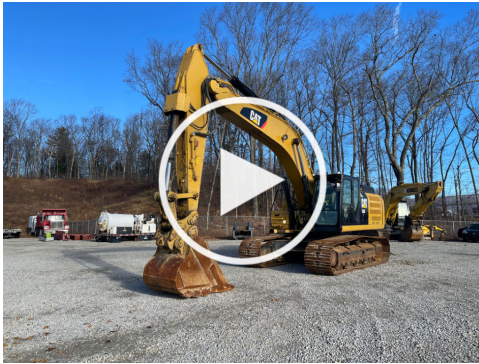




Video:



**PHOTOS:** Click the link below to view all high resolution images

[https://app.aspenfieldservices.com/api/attachments/get/zu28qmN5b2gm8paQ8/full\\_report\\_0036356\\_zu28qmN5b2gm8paQ8.pdf?view](https://app.aspenfieldservices.com/api/attachments/get/zu28qmN5b2gm8paQ8/full_report_0036356_zu28qmN5b2gm8paQ8.pdf?view)

NOTE: By clicking above, you will be redirected to Aspen Field Services' website, not a Wells Fargo property.

Inspection Details	
Year	2016
Make	CAT
Model	336FL XE
Type	Excavator
VIN	CAT0336FLDFY00246
Inspection Date	12/14/2021
Location of Business	11 Fortune Blvd, Shrewsbury, MA, 01545
Hours	6,391
Warning Lights On	Check Machine Dimension
Operational Test	Passed
Cab Conditions	Good Condition
ROPS Condition	Good Condition
Cab A/C Condition	Good Condition
Cab Heat Condition	Good Condition
Hand Controls	Good Condition



# Aspen Field Services

Job #: 36356 /

Serial #: DFY00246

2016 CAT 336FLXE

For more information, visit:

[wellsfargo.com/equipmentseller](http://wellsfargo.com/equipmentseller)

Inspection Details Cont'd	
Pedals	Good Condition
Seat Condition	Good Condition
Controls	Good Condition
Switches	Good Condition
Boom Cylinder	Good Condition
Stick Cylinder	Good Condition
Bucket Cylinder	Good Condition
Engine Compartment	Good Condition
Intake Screen	Good Condition
Muffler	Good Condition
Working Lights	Good Condition
Tailgate Lights	NA
Cab Glass Condition	Good Condition
Left Track Condition	Poor Condition
Left Track Sprocket Condition	Poor Condition
Left Track Idler Condition	Poor Condition
Left Track Rollers Condition	Poor Condition
Right Track Condition	Poor Condition
Right Track Sprocket Condition	Poor Condition
Right Track Idler Condition	Poor Condition
Right Track Rollers Condition	Poor Condition
Comments	The cab unit is facing backwards. The rear counter weight paint is damaged. Undercarriage panels paint is damaged. The working lights step is damaged. Both tracks are worn out. Both tracks bushings and pins are worn out and loose. Warning light: Check machine dimension.

## Inspection Details Cont'd