



**DEKRA Services Inc.**  
**Customer Service 770-257-0107**

**BUS**

INSPECTOR: 5932  
 INSPECTION ID  
 133422

INSP DATE | VIN (LAST 8) | PO NUMBER  
 12/08/2020 | GW067369 |

Year: 2016 Make: MCI  
 Model: J4500 VIN: 2MG3JM8AXGW067369

SPECIFICATION WORKSHEET

<b>Interior Options</b>	
Interior Color:	GREY

<b>Steering Options</b>	
Power Steering?:	Yes

<b>Engine Options A</b>	
Eng Make:	DETROIT
Eng Model:	DD13
Eng Serial:	471934S0365867
Eng HP:	282
Cruise:	Yes
Clean air idle:	Yes

<b>Overall Condition</b>	
Overall Length:	45'
Overall Height:	140"
Overall Width:	102"

<b>Engine Options B</b>	
Odometer:	148180
Hub odometer:	NA
ECU HP:	500
ECU Miles:	148420
Eng Hours:	7674

<b>Miscellaneous</b>	
Seating Capacity:	50
Electronic Engine Controls:	Yes
Full Gauge Package:	Yes
Wraparound Dash:	Yes
Power Mirrors:	Yes
Tilt / Telescopic Steering Wheel:	Yes
AirRide Driver's Seat:	Yes
Restroom:	Yes
PA System:	Yes
Audio - Video System:	Yes
Number of Video Monitors:	6
Multi-Disc CD Changer:	Yes
Individual multi-Channel Audio System:	No
Global Positioning System:	Yes
In Motion Satellite TV System:	Yes
Road Viewing Monitor System:	Yes
Wheelchair Lift:	No
Underfloor Storage with Lift:	No
Parcel Rack Storage with Lift:	No
Traction Control:	Yes
Power Windshield Sun Visors:	Yes
Tour Guide Seat:	No
Other:	NA
Was Unit driven In ?:	Yes
Did Unit need to be jump started ?:	No
Was Unit towed in ?:	No
Did Unit start and run ?:	Yes
Unit Condition:	GOOD
If Unit is not driveable or will not start, Explain:	NA
Any extra options or features not listed on front page and any additional comments: NA	

<b>Engine Options C</b>	
Eng Brake:	JAKE
Fuel:	DIESEL
FT1 Capac (Gal):	210

<b>Exterior Options A</b>	
Air Horns:	NONE
Mirrors:	DUAL POWER
Exterior Color:	WHITE

<b>Axle / Susp Options</b>	
WheelBase (In):	315
Rear Ratio:	3.42
F Axle (lbs):	16,500
R Axle (lbs):	16,500
GVWR (lbs):	33,000
Suspension:	AIR RIDE
Tag Axle Capacity:	23,000
Rear Axle Model:	NA
Independent Front Suspension:	Yes
Full Coach Raise and Lowering Susp.:	Yes
Tag Axle Unloading System:	Yes
Front Susp. Kneeling System:	Yes

<b>Transmission Options</b>	
Trans Make:	ALLISON
Trans Model:	B500
Trans Speed:	6



**DEKRA Services Inc.**  
**Customer Service 770-257-0107**

**BUS**

INSPECTOR: 5932  
 INSPECTION ID  
 133422

INSP DATE | VIN (LAST 8) | PO NUMBER  
 12/08/2020 | GW067369

Brakes Options	
ABS:	YES
HYD:	NO
AIR:	YES
DISK:	YES
DRUM:	NO
Brake Plates:	FRONT N / REAR N

Brakes			
Steer Axle Brakes:	60%	60%	(1)
Drive Axle Brakes:	60%	60%	(2)
	60%	60%	(3)
			(4)
			(5)
			(6)

Tires [Front]	
Size:	315/80 R22.5
Wheels:	ALUMINUM
Detail:	

Tires [Rear]	
Size:	315/80 R22.5
Wheels:	ALUMINUM
Detail:	

	STEER AXLE	DRIVE AXLE #1	DRIVE AXLE #2
RIGHT	12 / 32nd HIGHWAY / V	14 / 32nd LUG / R1	15 / 32nd LUG / R1
FRONT		14 / 32nd LUG / R1	/ 32nd /
		17 / 32nd LUG / R1	/ 32nd /
LEFT	11 / 32nd HIGHWAY / V		
		12 / 32nd LUG / R1	10 / 32nd LUG / R1

Brake Legend
BD = DRUM HAS MORE THAN 1/16 INCH LIP CL = CRACKED LINING LS = LEAKING SEAL(S)
Tire Legend
C = CUT D = DRY ROT F = FLAT M = MISMATCHED TIRES/CASING MA = MISMATCHED AXLES (FRONT vs. REAR) V = VIRGIN W = IRREGULAR WEAR R = RECAP: 1 = ONCE, 2 = TWICE, 3 = 3 TIMES
Tread Legend
H = HIGHWAY L = LUG



**DEKRA Services Inc.**  
**Customer Service 770-257-0107**

**BUS**

**INSPECTOR: 5932**  
**INSPECTION ID**  
**133422**

**INSP DATE** | **VIN (LAST 8)** | **PO NUMBER**  
12/08/2020 | GW067369 |

CONDITION REPORT

Engine Compartment Area		COMMENTS
Operational Test		COMMENTS
In Cab Inspection		COMMENTS
Outside Inspection		COMMENTS
X	Paint Condition & Physical Damage	DAMAGED R/S # 3 CARGO DOOR
Under Vehicle Inspection		COMMENTS
Tires/Wheels/Brakes		COMMENTS

Additional Services	Requested	Status	Comments
---------------------	-----------	--------	----------



**DEKRA Services Inc.**  
**Customer Service 770-257-0107**

**BUS**

**INSPECTOR: 5932**  
**INSPECTION ID**  
133422

<b>INSP DATE</b>	<b>VIN (LAST 8)</b>	<b>PO NUMBER</b>
12/08/2020	GW067369	

RECONDITIONING AND SUPPLEMENTAL ESTIMATE

ITEM	DESCRIPTION / COMMENTS
Paint Condition & Physical Damage	X   DAMAGED R/S # 3 CARGO DOOR

**COMMENTS:**  
THE BUS WAS INSPECTED AT MCI IN HAYWARD. THE UNIT WAS IN GOOD RUNNING CONDITION. THERE WAS DAMAGE TO THE RIGHT SIDE # 3 CARGO DOOR.



**DEKRA Services Inc.**  
**Customer Service 770-257-0107**

**BUS**

**INSPECTOR: 5932**  
**INSPECTION ID**  
**133422**

**INSP DATE** | **VIN (LAST 8)** | **PO NUMBER**  
 12/08/2020 | GW067369 |



VIN



DASH W/ STEERING WHEEL



LEFT SIDE



FRONT LEFT CORNER



FRONT OF BUS



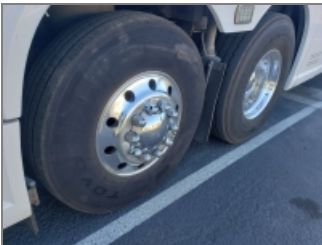
FRONT RIGHT CORNER



RIGHT SIDE



REAR RIGHT CORNER



RIGHT REAR TIRES



REAR OF BUS



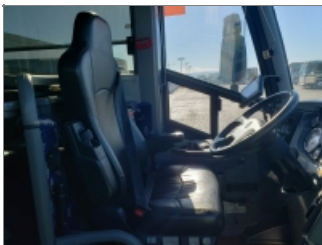
REAR LEFT CORNER



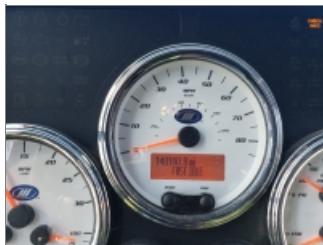
LEFT REAR TIRES



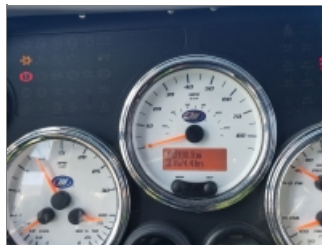
ENTRY WAY STEPS AT FRONT  
 DOOR



COMPLETE DRIVERS SEAT



ODOMETER



DASH HOUR METER



DEKRA Services Inc.  
Customer Service 770-257-0107

**BUS**

INSP DATE | VIN (LAST 8) | PO NUMBER  
12/08/2020 | GW067369

INSPECTOR: 5932  
INSPECTION ID  
133422



INSIDE OF BUS, FRONT TO BACK



FLOOR OF BUS, FRONT TO BACK



INSIDE OF BUS, BACK TO FRONT



FLOOR OF BUS, BACK TO FRONT



INSIDE RESTROOM #1



SEATS



LEFT STEER TIRE



RIGHT STEER TIRE



ENGINE COMPARTMENT



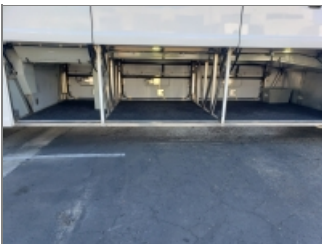
ENGINE FAMILY NUMBER



ENGINE COMPARTMENT  
RIGHT SIDE



ENGINE COMPARTMENT  
LEFT SIDE



INSIDE STORAGE  
COMPARTMENTS



ADDITIONAL 1



ADDITIONAL 2



ADDITIONAL 3



DEKRA Services Inc.  
Customer Service 770-257-0107

**BUS**

INSPECTOR: 5932  
INSPECTION ID  
133422

INSP DATE | VIN (LAST 8) | PO NUMBER  
12/08/2020 | GW067369

System	Parameter	Value	Unit	Min	Max
Engine	Engine Speed	1200	rpm	800	1600
	Engine Load	15	%	0	100
	Engine Temp	180	F	160	200
	Oil Pressure	40	psi	30	50
	Water Temp	190	F	170	210
	Brake Pressure	100	psi	80	120
	Steering Angle	0	deg	-10	10
	Transmission Temp	170	F	150	190
	Exhaust Temp	200	F	180	220
	Alternator Voltage	14.5	V	13.5	15.5

ADDITIONAL 4

System	Parameter	Value	Unit	Min	Max
Engine	Engine Speed	1200	rpm	800	1600
	Engine Load	15	%	0	100
	Engine Temp	180	F	160	200
	Oil Pressure	40	psi	30	50
	Water Temp	190	F	170	210
	Brake Pressure	100	psi	80	120
	Steering Angle	0	deg	-10	10
	Transmission Temp	170	F	150	190
	Exhaust Temp	200	F	180	220
	Alternator Voltage	14.5	V	13.5	15.5

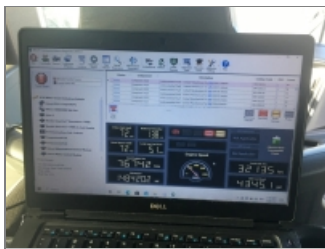
ADDITIONAL 5

System	Parameter	Value	Unit	Min	Max
Engine	Engine Speed	1200	rpm	800	1600
	Engine Load	15	%	0	100
	Engine Temp	180	F	160	200
	Oil Pressure	40	psi	30	50
	Water Temp	190	F	170	210
	Brake Pressure	100	psi	80	120
	Steering Angle	0	deg	-10	10
	Transmission Temp	170	F	150	190
	Exhaust Temp	200	F	180	220
	Alternator Voltage	14.5	V	13.5	15.5

ADDITIONAL 6

System	Parameter	Value	Unit	Min	Max
Engine	Engine Speed	1200	rpm	800	1600
	Engine Load	15	%	0	100
	Engine Temp	180	F	160	200
	Oil Pressure	40	psi	30	50
	Water Temp	190	F	170	210
	Brake Pressure	100	psi	80	120
	Steering Angle	0	deg	-10	10
	Transmission Temp	170	F	150	190
	Exhaust Temp	200	F	180	220
	Alternator Voltage	14.5	V	13.5	15.5

ADDITIONAL 7



J PRO SCREEN