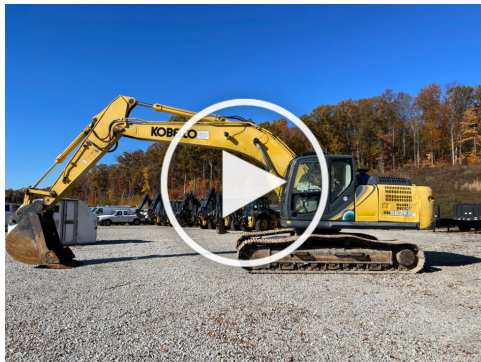




Video:



PHOTOS: Click the link below to view all high resolution images

https://app.aspenfieldservices.com/api/attachments/get/S53HyXn9qgehpdhme/full_report_0035339_S53HyXn9qgehpdhme.pdf?view

NOTE: By clicking above, you will be redirected to Aspen Field Services' website, not a Wells Fargo property.

Inspection Details

Year	2016
Make	Kobelco
Model	SK260LC-10
Type	Excavator
Location of Inspection	JJ Kane Auctioneers - 11 Fortune Blvd , Shrewsbury, MA, 01545
Hours	5690
Active Warnings	Not able to verify
Operational Test	Passed
Enclosed Cab	Yes
Controls	Standard
Cab A/C	Yes
Cab A/C Condition	Good Condition
Cab Heat	Yes
Cab Heat Condition	Good Condition
Backup Camera	None



Aspen Field Services

Job #: 35339 /

Serial #: LL16-10015

For more information, visit:

wellsfargo.com/equipmentseller

2016 KOBELCO SK260LC-10

Inspection Details Cont'd

Keyless Start	None
Seat	Tear
Pedals/Hand Controls	Good Condition
Rear Glass	Good Condition
Visual Inspection	Clean
Attachment	Good Condition
Attachment Serial Plate	Not Available
Quick Coupler	None
Quick Coupler Condition	NA
Bucket Cylinder	Good Condition
Stick Cylinder	Good Condition
Boom Cylinders	Good Condition
Hydraulic Lines	Good Condition
Boom Arm Left	Good Condition
Boom Arm Right	Good Condition
Front ROPS	Good Condition
Left ROPS	Good Condition
Cab Door	Good Condition
Right ROPS	Good Condition
Engine Door	Damaged
Engine Compartment	Clean
Engine MFR	Not Available
Intake Screen	Good Condition
Muffler	Good Condition
Backup Camera	None
Left Track Brand	Not Available
Left Track Condition	Fair
Left Track Sprocket	Worn
Left Track Rollers	Worn
Left Track Idler	Fair
Right Track Brand	Not Available
Right Track Condition	Fair
Right Track Sprocket	Worn

Inspection Details Cont'd



Aspen Field Services

Job #: 35339 /

Serial #: LL16-10015

For more information, visit:

wellsfargo.com/equipmentseller

2016 KOBELCO SK260LC-10

Right Track Rollers	Worn
Right Track Idlers	Fair
Working Lights	Good Condition
Head Lights	Good Condition
Tailgate Lights	Good Condition
Comments	Seat has tears. Left engine door is damaged. The back of the unit has some paint damaged. The monitor screen is not damaged but when trying to take pictures it doesn't capture what's showing there. Left track is loose and will need to be readjusted or the track tensioner is damaged and will need to be repaired. Sprockets are showing worn. Track rollers are showing worn. We were not able to find the maintenance screen on the unit nor the operator to verify active warnings.