



**CONDITION REPORT  
FOR TRUCKS OR TRAILERS**

<b>CUSTOMER</b>	<b>WELLS FARGO</b>
<b>LEASE#</b>	
<b>LOCATED AT</b>	<b>GAMACHE TRUCK CENTER</b>
<b>DATE OF APPRAISAL</b>	<b>JANUARY 15, 2020</b>

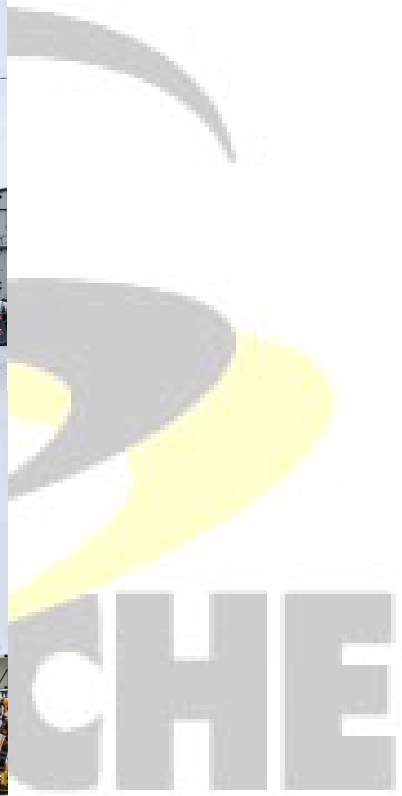
<b>MAKE</b>	<b>FREIGHTLINER</b>
<b>YEAR</b>	<b>2017</b>
<b>MODEL</b>	<b>CASCADIA CA125SLP</b>
<b>TRUCK OR TRAILER</b>	<b>TRUCK</b>
<b>TYPE OF TRAILER</b>	
<b>KILOMETERS</b>	<b>635 495 KM</b>
<b>SERIAL</b>	<b>1FUJGHDV2HLHM1650</b>
<b>HOURS</b>	<b>8 983 HRS</b>
<b>WHEELBASE</b>	<b>228"</b>
<b>SLEEPER</b>	<b>2 X 64"</b>
<b>MOTOR</b>	<b>DETROIT DD13</b>
<b>HORSEPOWER</b>	<b>470 HP</b>
<b>ENGINE BRAKE</b>	<b>YES</b>
<b>TRANSMISSION</b>	<b>13 SPEEDS</b>
<b>SUSPENSION</b>	<b>AIR</b>
<b># OF AXLES</b>	<b>3</b>
<b>FRONT AXLE (LBS)</b>	<b>13 000 LBS</b>
<b>FRONT WHEEL TYPE</b>	
<b>CENTRE AXLE (LBS)</b>	
<b>REAR AXLE (LBS)</b>	<b>40 000 LBS</b>
<b>REAR WHEEL TYPE</b>	
<b>RATIO</b>	<b>3.36</b>
<b>SUSPENSION SPREAD</b>	<b>51"</b>
<b>WHEEL SIZE</b>	
<b>WHEEL TYPE (ALUM/STEEL)</b>	<b>ALUMINIUM</b>
<b>TIRE SIZE</b>	
<b>FRONT</b>	<b>11R22.5</b>
<b>CENTER</b>	
<b>REAR</b>	<b>455/55R22.5</b>
<b>TIRE PERCENTAGES</b>	

FRONT	60%
CENTER	
REAR	20%
	30%
TRAILER LENGTH	
TRAILER WIDTH	
OTHER	
COLOR	WHITE

**GENERAL CONDITION:FAIR**

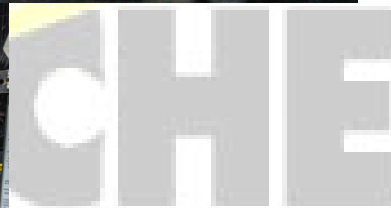
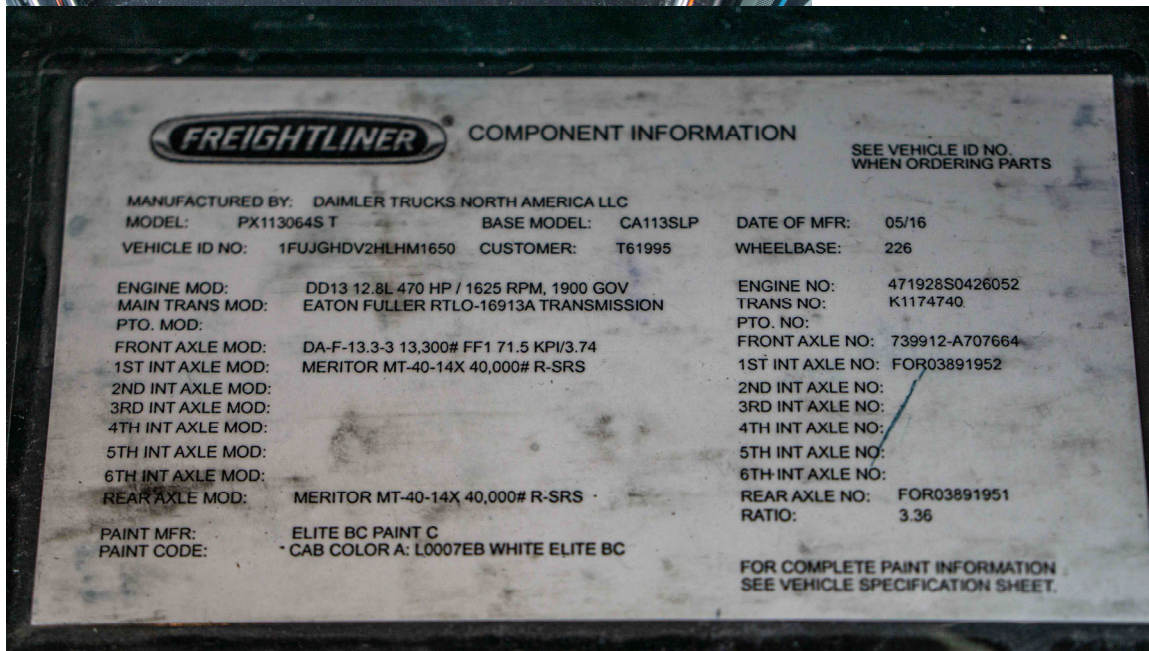
**COMMENTS: RUSTED FRAME, MISSING TRAILER HOOK, RUSTED STEERING BOX, RUSTED FOG LIGHT SUPPORTS, DAMAGED PAINT ON HOOD, SCRATCHED HEAD LIGHTS, DAMAGED BUMPER, ENGINE LEAKING OIL, DAMAGED PAINT ON DRIVER DOOR, RUSTED DEF SUPPORT, RUSTED BLOCK HEATER PLUG, SCRATCHED AIR DEFLECTOR, RUSTED STEPS, RUSTED FUEL TANK SUPPORT, RUST ON WHEELS, RUSTED DIFFERENTIAL HOUSING, DAMAGED CAB PAINT, SCRATCHED INTERIOR, DAMAGED SEAT, NEEDS TIRES SINGLES**

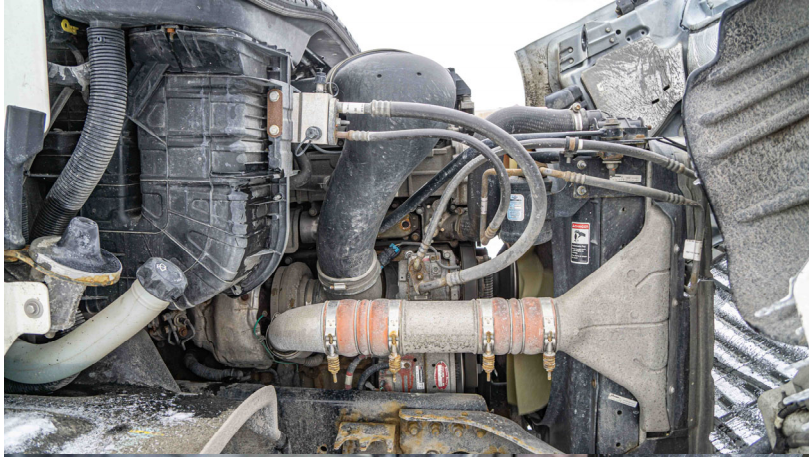


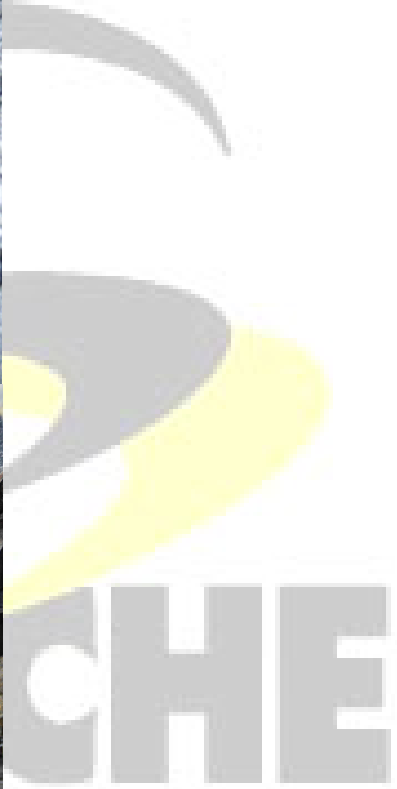
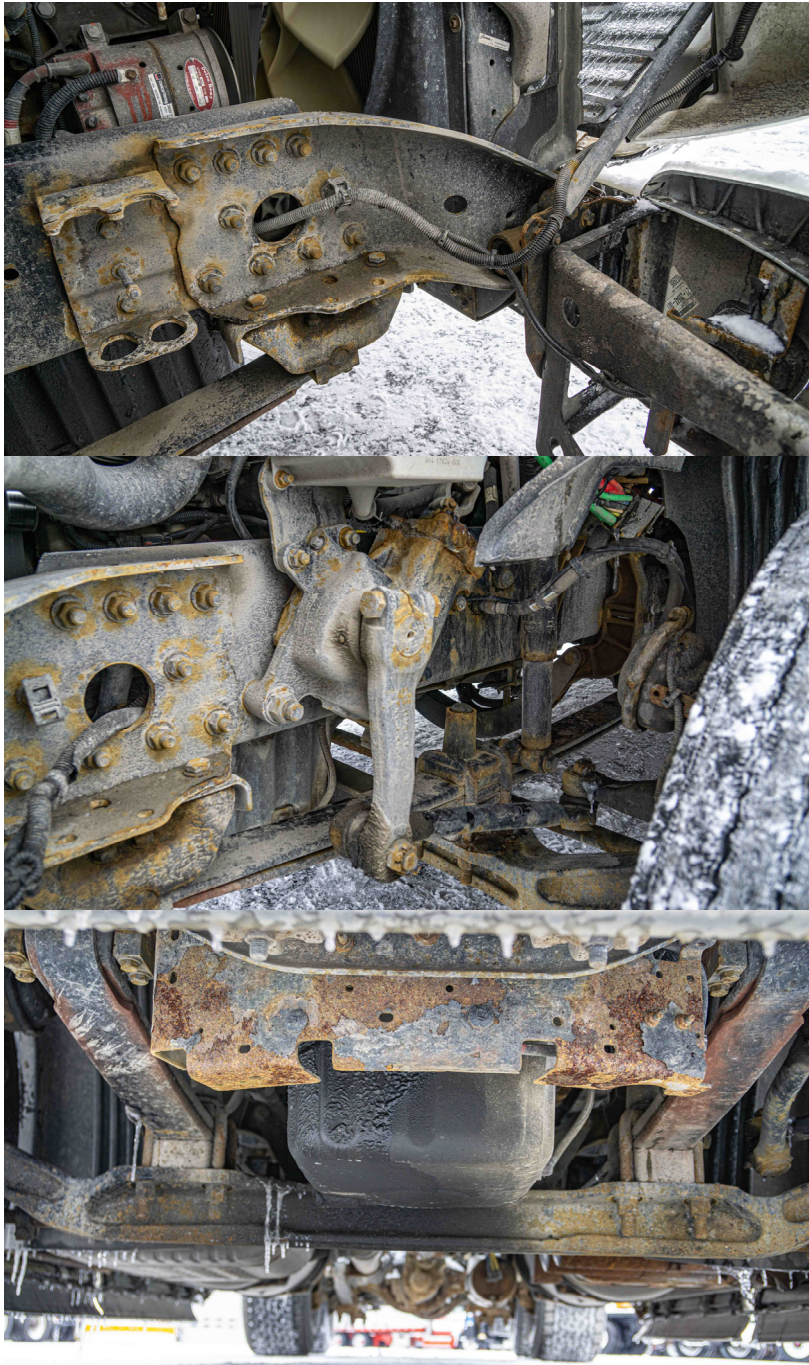
















**GAMACHE**