 **HAMM**

MULTIMETRONIC

HD 120V
OSCILLATION

 **RITCHIE BROS.**
EQUIPMENT





HD+120i
OSCILLATION

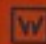
HAMM T HONIC

HAMM

rb **RICHIE BROS.**
CONSTRUCTION EQUIPMENT





 **HAMM**

E-CONTROL

HD 120i
OSCILLATION

 **RITCHIE BROS.**
Auctioneers



HAMM

rb RITCHIE BROS
CONSTRUCTION EQUIPMENT







4

109
L
R

SD 100000
Serial No. 100000
Date of Mfg. 10/10/10
Date of Test 10/10/10
Tested By [illegible]
Tested At [illegible]



FRITCHE BROS.
Auctioneers

HD+ 120i
OSCILLATION



FB RITCHEY BROS.
Auctioneers



GO PIONEER BROS

HAMM

10 INCHES



rb RITCHIE BROS.
Auctioneers



fb RITCHIE BROS.
Auctioneers



HAMM

4

RITCHE BROS.
Auctioneers



F.D. MITCHELL BROS.



HAMM

FB RITCHIE BROS





Winterized

H274.0067

11/4/25



Winterized
11/4/25
H274.0067



HAMM





HAMM



florhillspros







HAMM

2956 h
0.0 mph
0
LOW
90 °F

Control panel on the left side of the operator's seat, featuring a stop button, a plus button, a minus button, and a wavy line icon, all enclosed in an orange circle. Below this circle is a 'CHECK' button with a left-pointing arrow.

Control panel on the right side of the operator's seat, featuring a stop button, a plus button, a minus button, and a wavy line icon, all enclosed in an orange circle.











WIRTGEN
GROUP

2175352



fb RITCHIE BROS.
Auctioneers





2013

Dichtung
festziehen.
Luftblasen mehr

2210

instruction de montage.

Attention: Châta le joint.
à la main jusqu'à ce que le
joint soit en contact, puis le
serrer avec un tournevis. Sans excès
de force.
Après avoir serré le joint,
vérifier l'étanchéité en tournant le
cylindre à l'encre.

52341
2-9-25

W-101
WARNING

www.milwaukee.com



TOP

HAMM
AIR CLEANER 2044708
MAIN ELEMENT 2041700
SAFETY ELEMENT 2041700

SC DN 1 1/2 WP 100 bar 202
WP 105

fb RITCHIE BROS.
Auctioneer

W HAMM**CE**

Homologation				
Bezeichnung Designation	Tandemwalze / Tandem Roller			
Typ Type	HD + 120i VO		Baujahr Year of Manufacture	2021
Fz. Ident Nr. Prod. Ident No. (PIN)	WGH0H274AHAA00067		Leergewicht Basic Weight	11995 kg
Motorleistung Line Power	115,0/2300	kW/min ⁻¹	Betriebsgewicht Operating Weight	12885 kg
Betriebsgewicht nom Operating Weight	13700			kg
Zulässiges Gesamtgewicht StVZO Permissible Total Weight StVZO	13470			kg
hinter S. 10	6550 / 6920			kg

Hammstraße 1 – D – 95643 Tirschenreuth

Made in Germany

HAMM



ECO



ITCHIE BROS.
customers

binen 5

6550 / 6920

kg

Hammstraße 1 - D-95643 Tirschnitz

Made in Germany



NB000061159

OC Schd/IP Tag

375-86

		Lot #	Notes
360 <input type="checkbox"/>	Fluids <input type="checkbox"/>	Date	4/27
Video <input type="checkbox"/>	Inspection <input type="checkbox"/>		
Rephoto <input type="checkbox"/>	<input type="checkbox"/>		



420 bar MSHA

bar MSHA IC-844

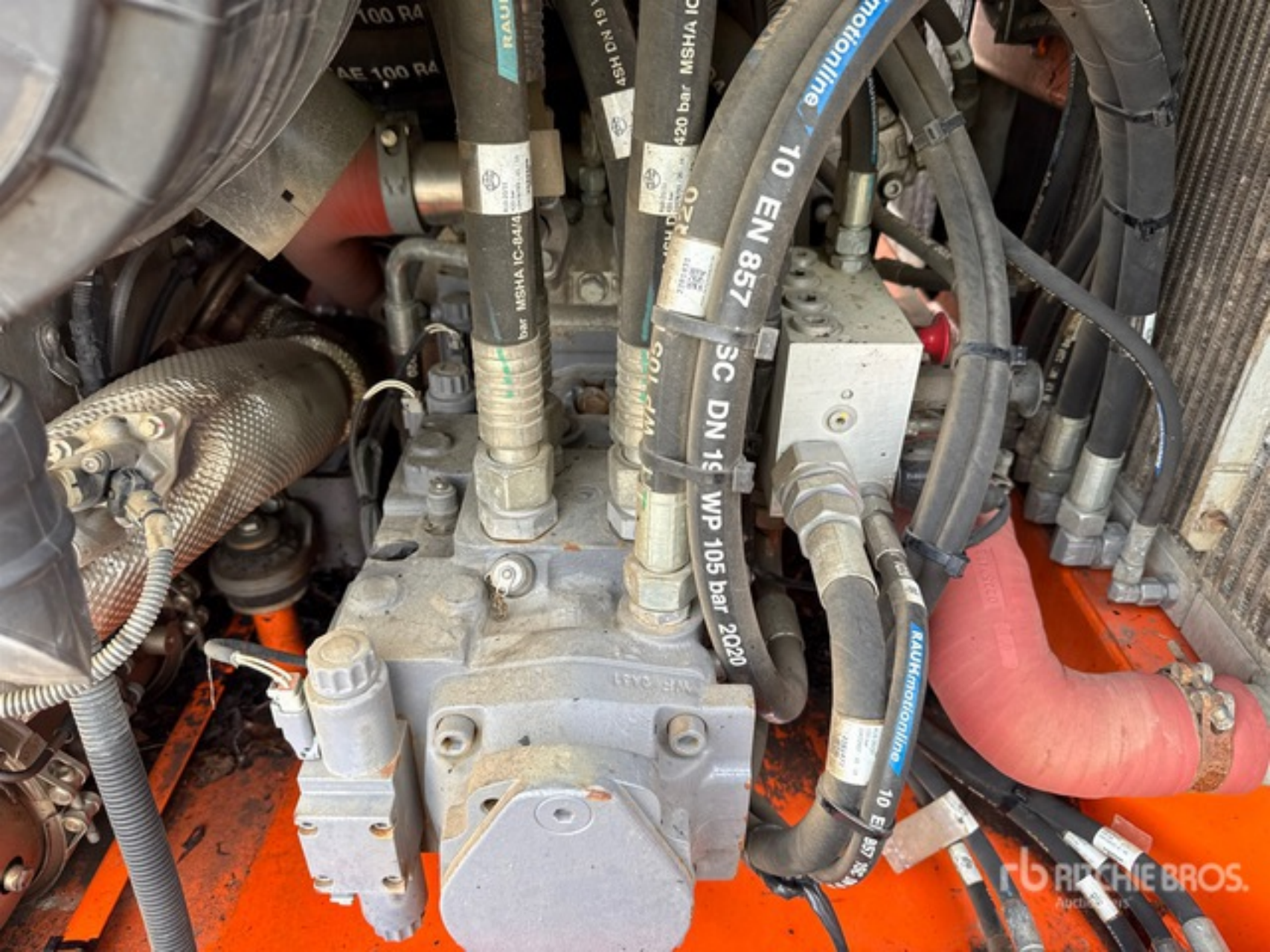
3C DN 15 WP 105 bar 3000

10 EN 857

RAUMERHOCHDRUCK

RAUMERHOCHDRUCK

FLITCHIE BROS
Auction



100 RA
AE 100 RA

RAUH

161 NCHSA

420 bar MSHA IC

bar MSHA IC-84/4

420

SC DN 19

WP 105 bar 2020

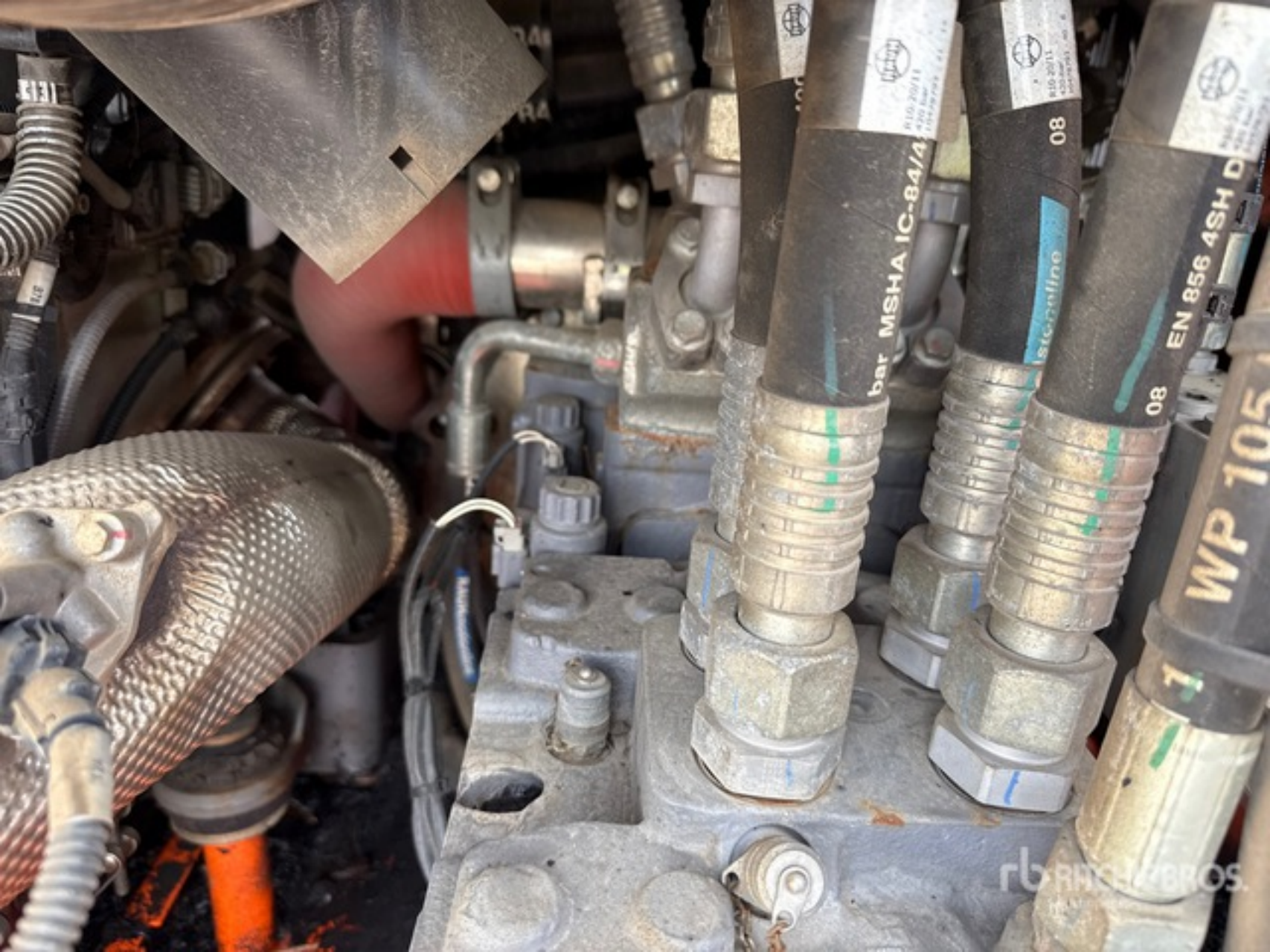
10 EN 857

RAUHmotionline

10 E 857







bar MSHA IC-84/4

08

08

EN 856 4SH D

WP 105

rbn.com/veros



HD 1201
OSCILLATION



10 EN 85

Tionline
TELECOTR



RD 1201
OSCILLATION



HA

27



tb RITCHIE BROS
Auctioneers



FÜHNLEBROS.

UNSCR

FILT

FILT
UNSCR

1523410
12-9-20

