









S417 TC

54







MANUFACTURED BY		EVOBUS GMBH STUTT GART, GERMANY				
GVWR	22 920 KG (50 530 LBS)	DATE				
GAWR		TIRE	RIM	COLD INFLATION PRESSURE		
				PSI	KPA	
FRONT	7 500 KG (16 530 LBS)	315 / 80 R 22.5 'J'	22.5 x 9.00	123	849	SINGLE
REAR	9 072 KG (20 000 LBS)	315 / 80 R 22.5 'J'	22.5 x 9.00	94	649	DUAL
TAG	6 350 KG (14 000 LBS)	315 / 80 R 22.5 'J'	22.5 x 9.00	94	649	SINGLE
THIS VEHICLE CONFORMS TO ALL APPLICABLE U.S. FEDERAL MOTOR VEHICLE SAFETY STANDARDS IN EFFECT ON THE DATE OF MANUFACTURE SHOWN ABOVE						
V.I.N.	WKKKA574H8H3010292		TYPE OF VEHICLE	BUS		







S 417 TT















10 20 30 40 50 60 70 80
100 120

3733433
5448

mi

km/h
mph

















IMPORTANT ENGINE INFORMATION
FUEL RATE AT 6500 HP 311 LBS/LHR MAX
INITIAL INJECTION TIMING 17.00/18.00
ENGINE FAMILY 6000H1/1700
LANT 411613220864
ADN HP 528 @ 1825 RPM
MFG DATE 200908
VALUE VLN 8190251110
DELEGATED ASSEMBLY
EMISSION CONTROL SYSTEM
EGR DC 670A 3000L/MIN
FROM USE IN VEHICLE
REG. STATE
HEAD OUTLET
HAS A PRRM
HEAVY-DUTY ENGINE
FOR USE IN JURISDICTIONS
AG CFR 84.003. SALE OF THIS ENGINE
URBAN BUS IS A VIOLATION OF FEDERAL
THE CLEAN AIR ACT. THE MANUFACTURER
OPERATE OR USE THIS ENGINE TO



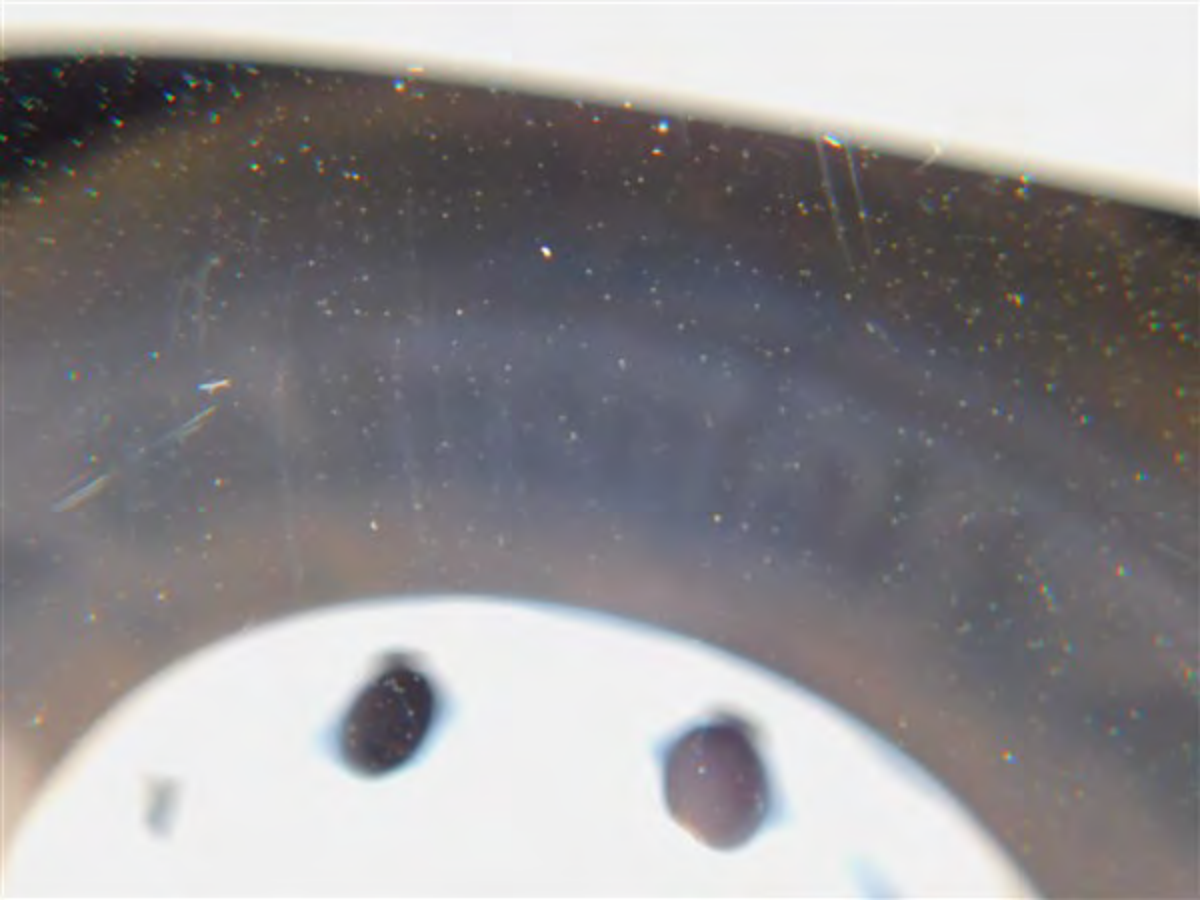
















REGISTERED IN THE
STATE OF TEXAS
CHASSIS
VIN: 20001 20001

Coach HA3



245/80 R 22.5
M+S

SAFETY WARNING
A tire with a tread depth less than 2/32 inch (1.6 mm) is unsafe and should be replaced. A tire with a tread depth less than 4/32 inch (3.2 mm) is unsafe and should be replaced. A tire with a tread depth less than 6/32 inch (4.8 mm) is unsafe and should be replaced. A tire with a tread depth less than 8/32 inch (6.4 mm) is unsafe and should be replaced. A tire with a tread depth less than 10/32 inch (8.0 mm) is unsafe and should be replaced. A tire with a tread depth less than 12/32 inch (9.6 mm) is unsafe and should be replaced. A tire with a tread depth less than 14/32 inch (11.2 mm) is unsafe and should be replaced. A tire with a tread depth less than 16/32 inch (12.8 mm) is unsafe and should be replaced. A tire with a tread depth less than 18/32 inch (14.4 mm) is unsafe and should be replaced. A tire with a tread depth less than 20/32 inch (16.0 mm) is unsafe and should be replaced. A tire with a tread depth less than 22/32 inch (17.6 mm) is unsafe and should be replaced. A tire with a tread depth less than 24/32 inch (19.2 mm) is unsafe and should be replaced. A tire with a tread depth less than 26/32 inch (20.8 mm) is unsafe and should be replaced. A tire with a tread depth less than 28/32 inch (22.4 mm) is unsafe and should be replaced. A tire with a tread depth less than 30/32 inch (24.0 mm) is unsafe and should be replaced. A tire with a tread depth less than 32/32 inch (25.6 mm) is unsafe and should be replaced.



0.15
32 in

ON 0 mm in/F HOLD



BOTO

ALL

BT 968

100 100 100 119

100 100 100 119

100 100 100 119

315/80R22

STANDARD RIM 560

REAL TIRE
SOLE



ON 0 mm in/F HOLD

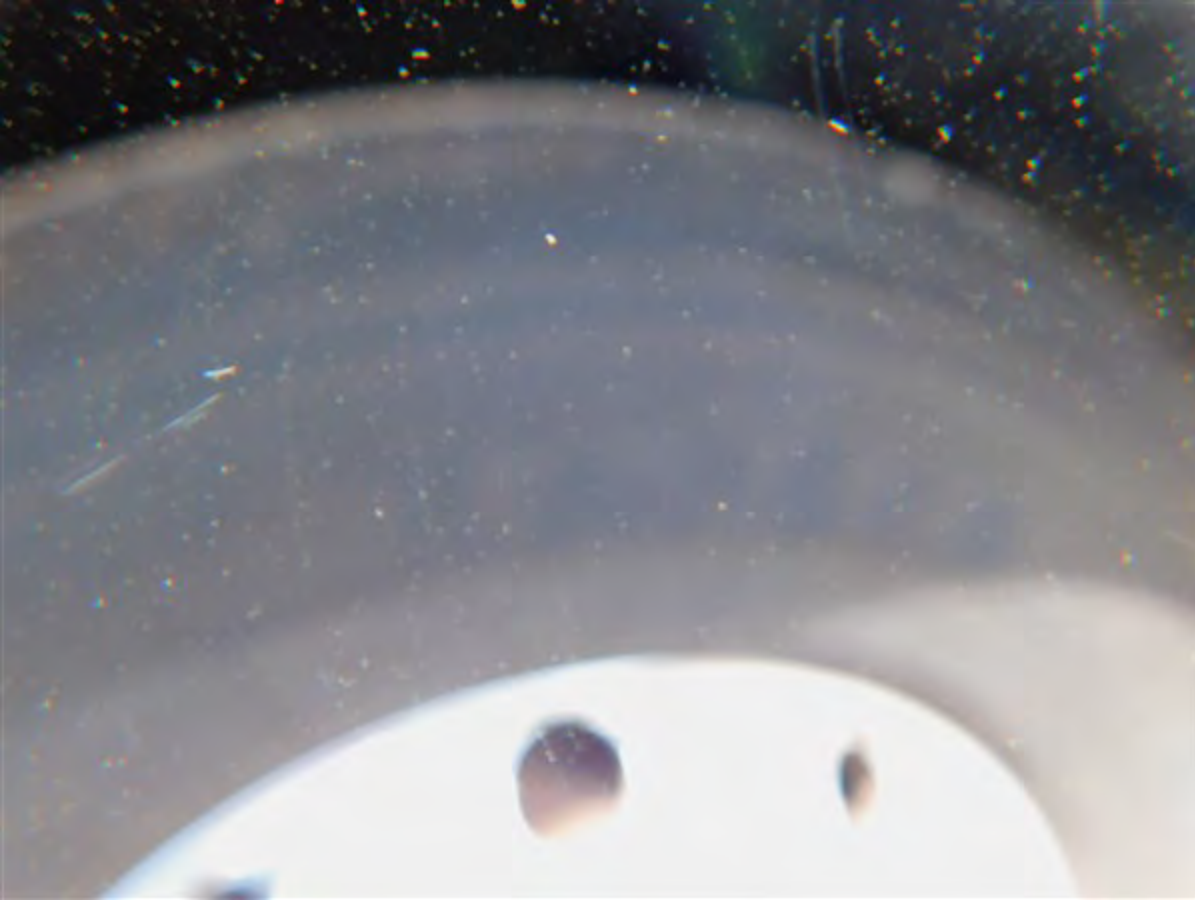
0.00 in

HARCO



0.22 in

ON 0 mm in/F HOLD







315/30R-22.5
REGROOVABLE
STANDARD RIM 9.00



ON

0

mm

in/F

HOLD

0.000 in

KAPSEN

MADE IN GERMANY

1000000000

HS107

WARNING
NEVER MOUNT TIRE FROM

THE INSIDE TO THE OUTSIDE TO AVOID OVERLOADING OR MISAPPLICATION. FOLLOW TIRE MANUFACTURER'S RECOMMENDATIONS. ALWAYS CHECK INFLATION PRESSURE FREQUENTLY WITH AN ACCURATE GAGE. PROTECT TIRE FROM EXCESSIVE HEAT AND OIL. TIRE WEAR IS AFFECTED BY LOAD, SPEED, AND ROAD SURFACE. ALWAYS USE PROPER MOUNTING TECHNIQUE. ONLY USE SPECIALTY TRAILER TUBES. ALWAYS USE SAFETY GAGE AND CAP. ONLY EXTENSION AIR.



33115/3012-20

REGROOVABLE
STANDARD RIM 8.00

5



ON

0

mm

in/F

HOLD

0.00 in

WETON



BT968

DOT 8000 MFL

315/80R22.5

STANLEY



ON

0

mm

In/E

HOLD

0.23 in

MAETER





Continental





325/60 R 22.5



ON 0 mm in/in HOLD

0.19
32







for 4 seconds.

See Operator's Manual.

COMMANDE

Filtre gaz échappement plein

Dégagez la zone
d'échappement.

Appuyez sur le contacteur
pendant 4 secondes.

Voir la notice d'utilisation.

MANEJO

Filtro de gases de escape lleno

Desocupar las inmediaciones.

Pulsar el interruptor y mantener
pulsado durante 4 segundos.

Ver instrucciones de servicio.

4.000.017.11.02

MOTOCORSA S.p.A.
Via S. Maria Maddalena, 1
00187 Roma, Italia
Tel. +39 06 478111
Fax +39 06 478112
www.motocorsa.com











A low-angle, rear view of a white Setra bus. The bus's rear window is partially covered by white curtains that are pulled back, revealing the interior. The interior features a large, light-colored seat with a dark, stylized 'S' logo. The word 'SETRA' is printed in large, black, spaced-out letters on a chrome-like trim strip below the window. Above the window, a row of red reflective safety markers is visible. Below the trim strip, a single red LED light is mounted on the white body panel. The background is a clear, bright blue sky.

S E T R A

















Diagnose Process

Engine

T Read version information

E Component ID: DTDSC*471N16 C0249546

* *

VIN Code: WKKA574H8H3010292

Software ID: 036*000*000*000*R**A*011
*004*15*06*29*09*20*16.8200.00272*

Total Vehicle Distance(miles): 370549.27

 OK

DIESELHANDHELD

DTC

0007f0ad 1/11

The fault code is not found
in the database

DIESELHANDHELD

DTC

SPN 3238 2/11

Aftertreatment 1 Exhaust

Dew Point

DTC Status:

Active, FMI=2,3 Times

DIESELHANDHELD

DTC

0007f0ab 3/11

The fault code is not found
in the database

DIESELHANDHELT

DTC

SPN 3223 4/11

Aftertreatment 1 Intake Gas
Sensor Heater Control

DTC Status:

Active, FMI=7,9 Times

DIESELHANDHELT

DTC

SPN 3216 5/11

Aftertreatment 1 Intake NOX

DTC Status:

Inactive, FMI=10, 126 Times

DIESELHANDHELD

DTC

SPN 3217 6/11

Aftertreatment 1 Intake O2

DTC Status:

Inactive, FMI=2,8 Times

DIESELHANDHELD

DTC

SPN 5443 7/11

Aftertreatment 1

Hydrocarbon Dosing System

DTC Status:

Inactive, FMI=15,1 Times

DIESELHANDHELD

DTC

0007f0b4 8/11

The fault code is not found
in the database

DTC

SPN 3597 9/11

ECU Power Output Supply
Voltage #1DTC Status:
Inactive, FMI=4, 1 Times

DTC

SPN 1121 10/11

EBS Brake Switch

DTC Status:

Inactive, FMI=13,1 Times

DIESELHANDHELD



DTC

SPN 168 11/11

Battery Potential (Voltage)

DTC Status:

Inactive, FMI=18, 1 Times