

ITEM DETAILS - Raymond 750-DR32TT

Monday, August 14, 2023

DETAILED EQUIPMENT INFORMATION

A qualified Ritchie Bros. employee collected detailed equipment information and performed functional tests on the key components of this asset.

General Appearance

Serial Number / VIN: 75021BC84259

Serial Number Location: sticker

Seller Reference Number: Seller Reference or Fleet Number:

Tires/ Undercarriage: Percentage Rating:, 0

Hour Meter / Odometer: 2622 hrs

Pump Hours: 531 Pump Hours

Drive Hours: 360 Drive Hours

Condition: Overall Condition for Age:, Poor

Features: 531 Pump Hours, 360 Drive Hours, 3 Stage Mast, Full Free Lift, 321 in Max Lift Height, 144 in Lowered Mast Height, 42 in Forks, Side Shift, 36 V, Battery Watering System



Model Description

Model Description: 3200 lb

Features

Features: Lift Truck Details:, Number of Mast Stages: 3 Stage Mast, Full Free Lift, Max Lift Height: 321 in Max Lift Height, Lowered Mast Height: 144 in Lowered Mast Height, 42 in Forks, Side Shift, Electric Powered, 36 V, Battery Watering System

Control Station



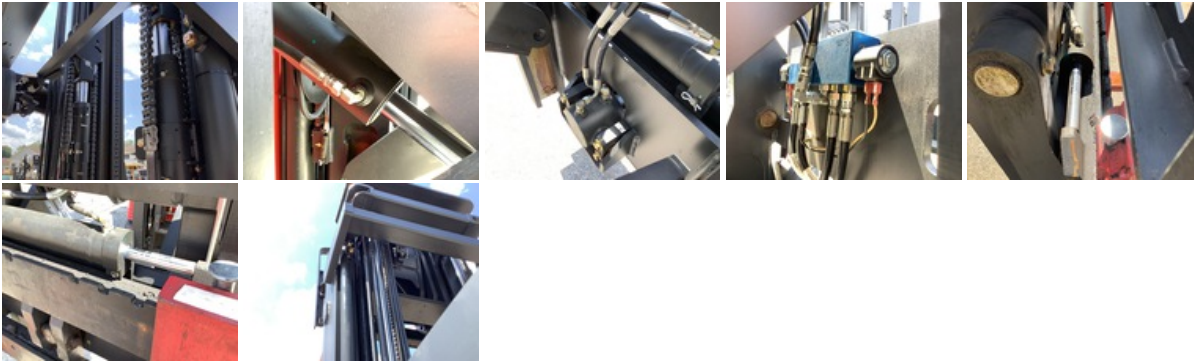
Electrical System



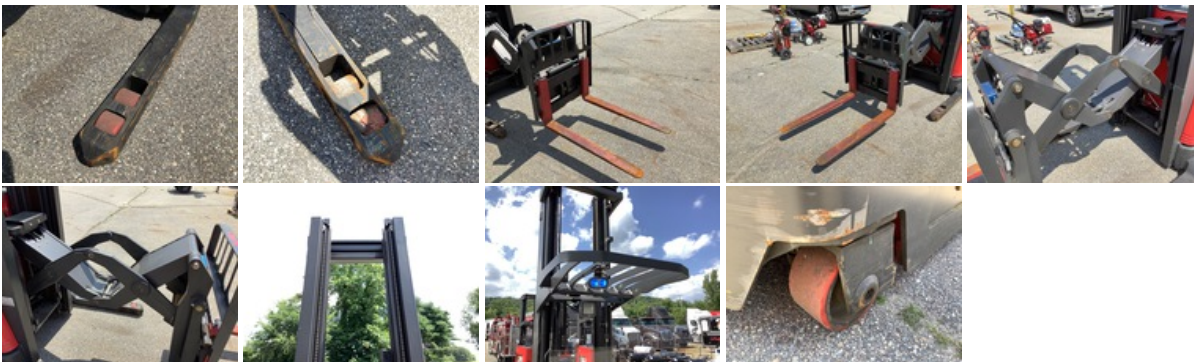
Drivetrain



Hydraulics



Chassis



Limited Function Check

Electric: The electrical system is operational.

Drivetrain: The drivetrain engages in forward and reverse.

Hydraulics: The hydraulic system is operational.

Deficiencies: Deficient Components/Systems Include but are not limited to: right side roller wheels missing rubber. left upper cylinder seepage

Logistics Information

Shipping Dimensions: 9 ft Long x 4 ft 2 in Wide x 12 ft Tall

General Shipping Information: Yes: Does this Unit Run? Yes: If self propelled, does the unit travel? Yes: Inflated Tires - item can roll? No: Is the unit taller than 12'? No: Is the unit wider than 8'6"? No: Noticeable fluid leaks?

.....

DISCLAIMER

General

The Detailed Equipment Information is limited in scope, and Ritchie Bros. Auctioneers has not inspected any aspects or components of the equipment other than those expressly set forth herein. Unless expressly stated, we make no representations or warranties, express or implied, concerning the equipment or its components, including without limitation any representations or warranties concerning functionality, conformity or compliance with any safety standard or requirement of any applicable authority or regulatory body, fitness for any particular purpose, or merchantability. You are strongly advised to perform your own detailed inspection of the equipment prior to bidding.

Functions

Equipment is not tested under load. We make no representation or warranty that equipment is operating in accordance with manufacturers' specifications. No inspection has been performed with respect to any functionality aspect other than those expressly included herein. Only select photos have been provided for individual undercarriage components, and may not be indicative of the condition of the entire undercarriage as a whole.

Dimensions

Measurements are given as an estimate only. Actual loaded dimensions may vary based on truck/trailer height and the loaded machine configuration/position. It is the buyer's responsibility to measure all loads before leaving our auction site to ensure the load is safe for transport. All measurements should be verified by the buyer. DO NOT rely on these measurements for transportation purposes