



**DEKRA Services Inc.**  
**Customer Service 770-257-0107**

**BUS**

INSPECTOR: 6224  
 INSPECTION ID  
 150855

INSP DATE | VIN (LAST 8) | PO NUMBER  
 04/28/2022 | H3010286 |

Year: 2017 Make: SETRA  
 Model: S417 TC VIN: WKKAS74H2H3010286

SPECIFICATION WORKSHEET

<b>Interior Options</b>	
Interior Color:	BLACK/GREY

<b>Steering Options</b>	
Power Steering?:	Yes

<b>Engine Options A</b>	
Eng Make:	DETROIT
Eng Model:	DD13
Eng Serial:	471938C0243306
Eng HP:	525
Cruise:	Yes
Clean air idle:	Yes

<b>Overall Condition</b>	
Overall Length:	45'
Overall Height:	144.5"
Overall Width:	102"

<b>Engine Options B</b>	
Odometer:	362022
Hub odometer:	
ECU HP:	
ECU Miles:	
Eng Hours:	N/A

<b>Miscellaneous</b>	
Seating Capacity:	56
Electronic Engine Controls:	Yes
Full Gauge Package:	Yes
Wraparound Dash:	Yes
Power Mirrors:	Yes
Tilt / Telescopic Steering Wheel:	Yes
AirRide Driver's Seat:	Yes
Restroom:	Yes
PA System:	

<b>Engine Options C</b>	
Eng Brake:	EXHAUST
Fuel:	DIESEL
FT1 Capac (Gal):	180 GALS

Audio - Video System:	No
Number of Video Monitors:	4
Multi-Disc CD Changer:	No
Individual multi-Channel Audio System:	No
Global Positioning System:	No
In Motion Satellite TV System:	No
Road Viewing Monitor System:	No
Wheelchair Lift:	No
Underfloor Storage with Lift:	No
Parcel Rack Storage with Lift:	No
Traction Control:	Yes
Power Windshield Sun Visors:	Yes
Tour Guide Seat:	No
Other:	
Was Unit driven In ?:	Yes
Did Unit need to be jump started ?:	Yes
Was Unit towed in ?:	No
Did Unit start and run ?:	No
Unit Condition:	GOOD

<b>Exterior Options A</b>	
Air Horns:	SINGLE
Mirrors:	DUAL POWER
Exterior Color:	WHITE

<b>Axle / Susp Options</b>	
WheelBase (In):	315
Rear Ratio:	3.90
F Axle (lbs):	16,530
R Axle (lbs):	20,000 INT AXLE 14,000
GVWR (lbs):	50,530
Suspension:	AIR RIDE
Tag Axle Capacity:	
Rear Axle Model:	MB-H06
Independent Front Suspension:	Yes
Full Coach Raise and Lowering Susp.:	Yes
Tag Axle Unloading System:	Yes
Front Susp. Kneeling System:	Yes

<b>Transmission Options</b>	
Trans Make:	ALLISON
Trans Model:	WTB 500R
Trans Speed:	6

**If Unit is not driveable or will not start, Explain:** THIS UNIT WAS JUST STARTING THE FACILITY'S CONDITIONING PROCESS, THE BUS DID HAVE POWER, THE LOT TECH TRIED TO JUMP IS BUT IT DID NOT TURN OVER.

**Any extra options or features not listed on front page and any additional comments:**



**DEKRA Services Inc.**  
**Customer Service 770-257-0107**

**BUS**

INSPECTOR: 6224  
 INSPECTION ID  
 150855

INSP DATE | VIN (LAST 8) | PO NUMBER  
 04/28/2022 | H3010286 |

Brakes Options	
ABS:	YES
HYD:	NO
AIR:	YES
DISK:	YES
DRUM:	NO
Brake Plates:	FRONT N / REAR N

Brakes	
Drive Axle Brakes:	(1)
	(2)
	(3)
	(4)
	(5)

Tires [Front]	
Size:	295/75 R22.5
Wheels:	ALUMINUM
Detail:	

Tires [Rear]	
Size:	295/75 R22.5
Wheels:	ALUMINUM
Detail:	

	STEER AXLE	DRIVE AXLE #1	DRIVE AXLE #2
RIGHT	14 / 32nd HIGHWAY / V	15 / 32nd LUG / V	12 / 32nd LUG / V
FRONT		16 / 32nd LUG / V	/ 32nd /
		19 / 32nd LUG / V	/ 32nd /
LEFT	16 / 32nd HIGHWAY / V		
		19 / 32nd LUG / V	23 / 32nd LUG / V

Brake Legend
BD = DRUM HAS MORE THAN 1/16 INCH LIP CL = CRACKED LINING LS = LEAKING SEAL(S)
Tire Legend
C = CUT D = DRY ROT F = FLAT M = MISMATCHED TIRES/CASING MA = MISMATCHED AXLES (FRONT vs. REAR) V = VIRGIN W = IRREGULAR WEAR R = RECAP: 1 = ONCE, 2 = TWICE, 3 = 3 TIMES
Tread Legend
H = HIGHWAY L = LUG



**DEKRA Services Inc.**  
**Customer Service 770-257-0107**

**BUS**

**INSPECTOR: 6224**  
**INSPECTION ID**  
**150855**

**INSP DATE** | **VIN (LAST 8)** | **PO NUMBER**  
 04/28/2022 | H3010286 |

CONDITION REPORT

Engine Compartment Area		COMMENTS	
Operational Test		COMMENTS	
In Cab Inspection		COMMENTS	
X	Windshield, Door & Any Other Glass	SEE NOTES	
Outside Inspection		COMMENTS	
X	Paint Condition & Physical Damage	SEE NOTES	
X	Mirrors	SEE NOTES	
X	Lights and Reflectors	SEE NOTES	
Under Vehicle Inspection		COMMENTS	
Tires/Wheels/Brakes		COMMENTS	
Additional Services	Requested	Status	Comments



**DEKRA Services Inc.**  
**Customer Service 770-257-0107**

**BUS**

**INSPECTOR: 6224**  
**INSPECTION ID**  
**150855**

**INSP DATE** | **VIN (LAST 8)** | **PO NUMBER**  
04/28/2022 | H3010286 |

**RECONDITIONING AND SUPPLEMENTAL ESTIMATE**

<b>ITEM</b>	<b>DESCRIPTION / COMMENTS</b>
Windshield, Door & Any Other Glass	X   SEE NOTES
Paint Condition & Physical Damage	X   SEE NOTES
Mirrors	X   SEE NOTES
Lights and Reflectors	X   SEE NOTES
RT SIDE ENTRY DOOR MOULDING MISSING A SECTION.	
RT FRT OUTER MIRROR COVER CRACKED.	
RT FRT FUEL PANEL CREASED.	
RT SIDE FLOOD LAMP BEZEL CRACKED.	
RT SIDE TAIL LAMP BROKEN.	
LT SIDE TAIL LAMP BROKEN.	
FRT BUMPER COVER GOUGED.	
RT FRT BUMPER END SCRAPED AND WEATHER STRIP MISSIN	
UNIT WAS A NO START TECH TRIED TO JUMP WOULDN'T	START / DIAG ONLY

**COMMENTS:**



DEKRA Services Inc.  
Customer Service 770-257-0107

**BUS**

INSPECTOR: 6224  
INSPECTION ID  
150855

INSP DATE | VIN (LAST 8) | PO NUMBER  
04/28/2022 | H3010286



1



2



3



4



5



6



7



8



9



10



11



12



13



14



15



17

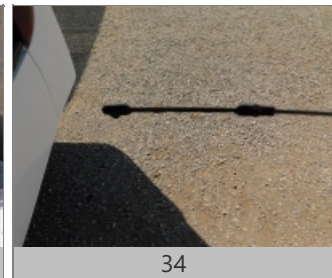


DEKRA Services Inc.  
Customer Service 770-257-0107

**BUS**

INSP DATE | VIN (LAST 8) | PO NUMBER  
04/28/2022 | H3010286 |

INSPECTOR: 6224  
INSPECTION ID  
150855



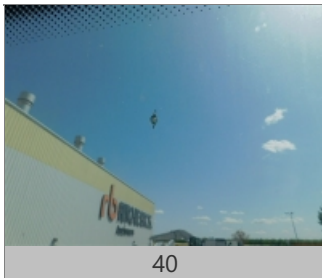


DEKRA Services Inc.  
Customer Service 770-257-0107

**BUS**

INSPECTOR: 6224  
INSPECTION ID  
150855

INSP DATE | VIN (LAST 8) | PO NUMBER  
04/28/2022 | H3010286 |





DEKRA Services Inc.  
Customer Service 770-257-0107

BUS

INSPECTOR: 6224  
INSPECTION ID  
150855

INSP DATE | VIN (LAST 8) | PO NUMBER  
04/28/2022 | H3010286 |







DEKRA Services Inc.  
Customer Service 770-257-0107

BUS

INSPECTOR: 6224  
INSPECTION ID  
150855

INSP DATE | VIN (LAST 8) | PO NUMBER  
04/28/2022 | H3010286 |



67



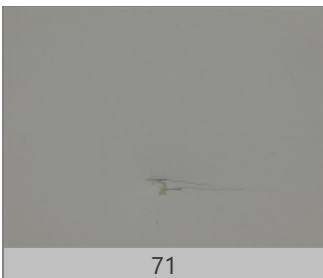
68



69



70



71



72



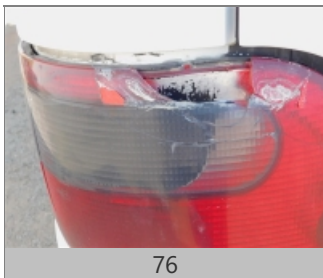
73



74



75



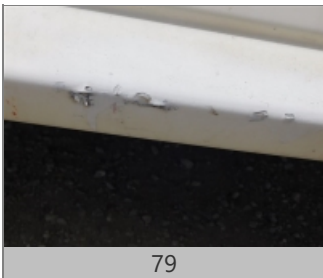
76



77



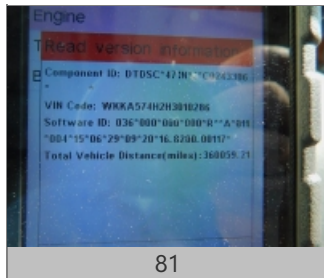
78



79



80



81



82