

## ITEM DETAILS - Nissan

Tuesday, March 05, 2024

### DETAILED EQUIPMENT INFORMATION

A qualified Ritchie Bros. employee collected detailed equipment information and performed functional tests on the key components of this asset.

#### General Appearance

Serial Number / VIN: CP1F29W29193

Seller Reference Number: Seller Reference or Fleet Number:

Tires/ Undercarriage: Percentage Rating:

Hour Meter / Odometer: 1161 hrs

**Features:** 3 Stage Mast, 187 in Max Lift Height, 83 in Lowered Mast Height, 48 in Forks, Global Component Technologies corporation 4 Cylinder 20.6 kW 2.1 L LPG Engine



#### Model Description

Model Description: 4400 lb

#### Features

**Features:** Lift Truck Details:, Number of Mast Stages: 3 Stage Mast, Max Lift Height: 187 in Max Lift Height, Lowered Mast Height: 83 in Lowered Mast Height, 48 in Fork extensions measure 72' Forks

#### Control Station



#### Engine

Engine: Other Global Component Technologies corporation 4 Cylinder 20.6 kW 2.1 L LPG Engine



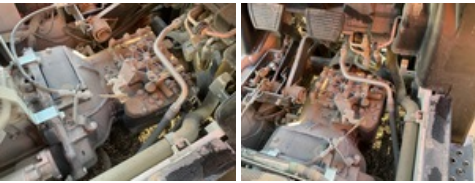
---

### Electrical System



---

### Drivetrain



---

### Hydraulics



---

### Chassis



---

### Limited Function Check

**Electric:** The electrical system is operational.

**Hydraulics:** The hydraulic system is operational.

**Engine:** The engine started and ran.

**Drivetrain:** The drivetrain engages in forward and reverse.

---

### Logistics Information

**Shipping Dimensions:** 14 ft Long x 3 ft 5 in Wide x 7 ft Tall

**Road Related Shipping Info:** The lights and brakes were not operationally checked

**General Shipping Information:** Yes: Does this Unit Run? Yes: If self propelled, does the unit travel? Yes: Inflated Tires - item can roll? No: Is the unit taller than 12? No: Is the unit wider than 8'6"? No: Noticeable fluid leaks?

**DISCLAIMER****General**

The Detailed Equipment Information is limited in scope, and Ritchie Bros. Auctioneers has not inspected any aspects or components of the equipment other than those expressly set forth herein. Unless expressly stated, we make no representations or warranties, express or implied, concerning the equipment or its components, including without limitation any representations or warranties concerning functionality, conformity or compliance with any safety standard or requirement of any applicable authority or regulatory body, fitness for any particular purpose, or merchantability. You are strongly advised to perform your own detailed inspection of the equipment prior to bidding.

**Functions**

Equipment is not tested under load. We make no representation or warranty that equipment is operating in accordance with manufacturers' specifications. No inspection has been performed with respect to any functionality aspect other than those expressly included herein. Only select photos have been provided for individual undercarriage components, and may not be indicative of the condition of the entire undercarriage as a whole.

**Dimensions**

Measurements are given as an estimate only. Actual loaded dimensions may vary based on truck/trailer height and the loaded machine configuration/position. It is the buyer's responsibility to measure all loads before leaving our auction site to ensure the load is safe for transport. All measurements should be verified by the buyer. DO NOT rely on these measurements for transportation purposes