

ITEM DETAILS - 2022 LiuGong CLG2025-C

Wednesday, February 28, 2024

DETAILED EQUIPMENT INFORMATION

A qualified Ritchie Bros. employee collected detailed equipment information and performed functional tests on the key components of this asset.

General Appearance

Serial Number / VIN: CLG2000ZCMT047645

CE Mark: No CE mark found

Seller Reference Number: Seller Reference or Fleet Number:

Tires/ Undercarriage: Percentage Rating:, 90%

Hour Meter / Odometer: 99 hrs

Condition: Overall Condition for Age:, Excellent

Features: 3 Stage Mast, 185 in Max Lift Height, 86 in Lowered Mast Height, Side Shift, 2021 US EPA Label, Kubota WG2503 4 Cylinder 2.5 L LPG Engine



Model Description

Model Description: 4450 lb

Features

Features: Lift Truck Details:, Number of Mast Stages: 3 Stage Mast, Max Lift Height: 185 in Max Lift Height, Lowered Mast Height: 86 in Lowered Mast Height, No Forks Side Shift, Does not come with LPG Tank

Control Station



Engine

Emissions Status: 2021 US EPA Label

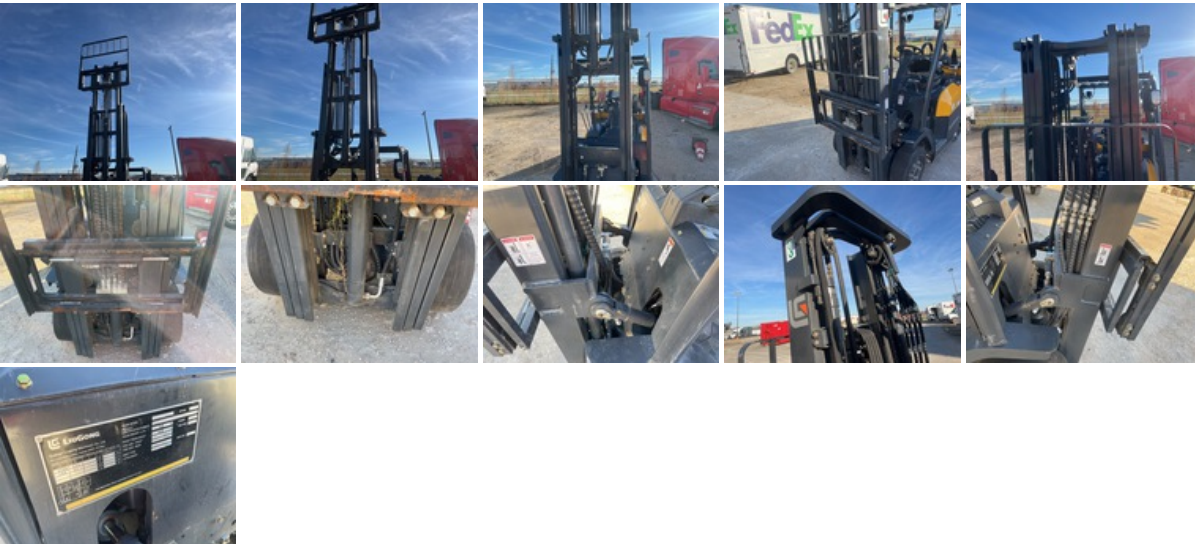
Engine: Kubota WG2503 4 Cylinder 2.5 L LPG Engine



Drivetrain



Hydraulics



Chassis



Limited Function Check

Electric: The electrical system is operational.

Drivetrain: The drivetrain engages in forward and reverse.

Engine: After jump starting, the engine ran. The engine would not re-start after shutting down without jump starting. Cannot locate engine oil dipstick

Hydraulics: The hydraulic system is operational. Low on oil

Deficiencies: Deficient Components/Systems Include but are not limited to: No Forks, brakes are slow to react

Logistics Information

Shipping Dimensions: 7 ft 6 in Long x 3 ft 6 in Wide x 7 ft 6 in Tall

Road Related Shipping Info: Yes: Brakes Operate? Yes: Tires OK?

General Shipping Information: Yes: Does this Unit Run? Yes: If self propelled, does the unit travel? Yes: Inflated Tires - item can roll? No: Is the unit taller than 12? No: Is the unit wider than 8'6"? No: Noticeable fluid leaks?

DISCLAIMER**General**

The Detailed Equipment Information is limited in scope, and Ritchie Bros. Auctioneers has not inspected any aspects or components of the equipment other than those expressly set forth herein. Unless expressly stated, we make no representations or warranties, express or implied, concerning the equipment or its components, including without limitation any representations or warranties concerning functionality, conformity or compliance with any safety standard or requirement of any applicable authority or regulatory body, fitness for any particular purpose, or merchantability. You are strongly advised to perform your own detailed inspection of the equipment prior to bidding.

Functions

Equipment is not tested under load. We make no representation or warranty that equipment is operating in accordance with manufacturers' specifications. No inspection has been performed with respect to any functionality aspect other than those expressly included herein. Only select photos have been provided for individual undercarriage components, and may not be indicative of the condition of the entire undercarriage as a whole.

Dimensions

Measurements are given as an estimate only. Actual loaded dimensions may vary based on truck/trailer height and the loaded machine configuration/position. It is the buyer's responsibility to measure all loads before leaving our auction site to ensure the load is safe for transport. All measurements should be verified by the buyer. DO NOT rely on these measurements for transportation purposes