



LIUGONG







RITCHIE BROS
Auctioneer

C25

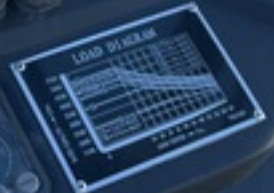


C-25
RITCHIE BROS.
AUCTIONEERS





LOOK
BEHIND
Carefully
before
moving
forward





Always work with the engine running
Always use proper technique

LIUGONG

PTO

LEON





LIUGONG



KITCHIEBROS





C25

LIUGONG

LIUGONG





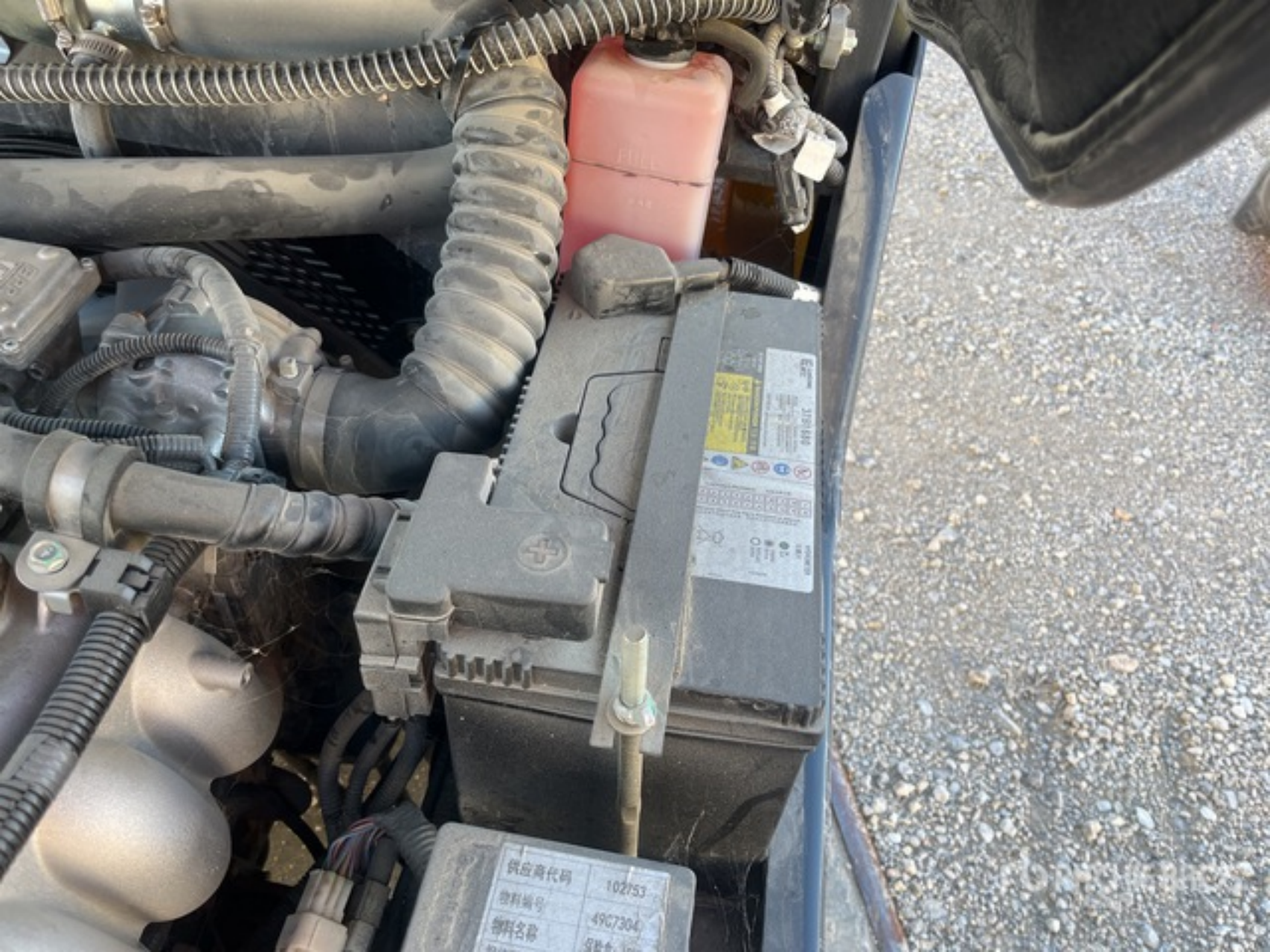


BITCHIE BROS.





物料编号	UN 53700 PC-09
物料名称	
规格型号	
	490730
	BU-15/10



供应商代码	102753
物料编号	49C7304
物料名称	铅酸蓄电池



Generator Specifications
Model: 10000
Voltage: 120V
Frequency: 60Hz
Power: 10000W
Current: 83.3A
Phase: 1
Protection: Overload, Short Circuit, Ground Fault
Control: Remote Start/Stop, Load Sensing
Cooling: Air Cooled
Maintenance: Oil Change, Filter Replacement
Warranty: 3 Years / 3000 Hours

STARTER RELAY	POWER RELAY	EMPT
120V	120V	120V
10A	10A	10A
10A	10A	10A
10A	10A	10A

RITCHIE BROS.
POWER EQUIPMENT

EMISSION CONTROL INFORMATION

THIS ENGINE MEETS 2021 U.S. EPA REGULATIONS FOR
NONROAD AND STATIONARY SI ENGINES AND CALIFORNIA
REGULATIONS FOR OFF-ROAD LARGE SI ENGINES.

Kubota KUBOTA Corporation (OEL ASSY)

MODEL: WG2503-L-ET FAMILY: MB8002 5HPA

ENGINE DISP: 2.5L ECS/EM/ECM MIX: TMC-H025

CERTIFIED EMISSION STD: 0.8g/kW-hr HC/NOx
20.8g/kW-hr CO

THIS ENGINE IS CERTIFIED TO OPERATE ON COMMERCIAL
PROPANE GAS.

VALVE LASH: 0.20mm SPARK PLUG GAP: 1.00mm
NO OTHER ADJUSTMENTS NEEDED

Kubota
WG2503

Serial No.: TMC9779

Code No.: EG542-22000

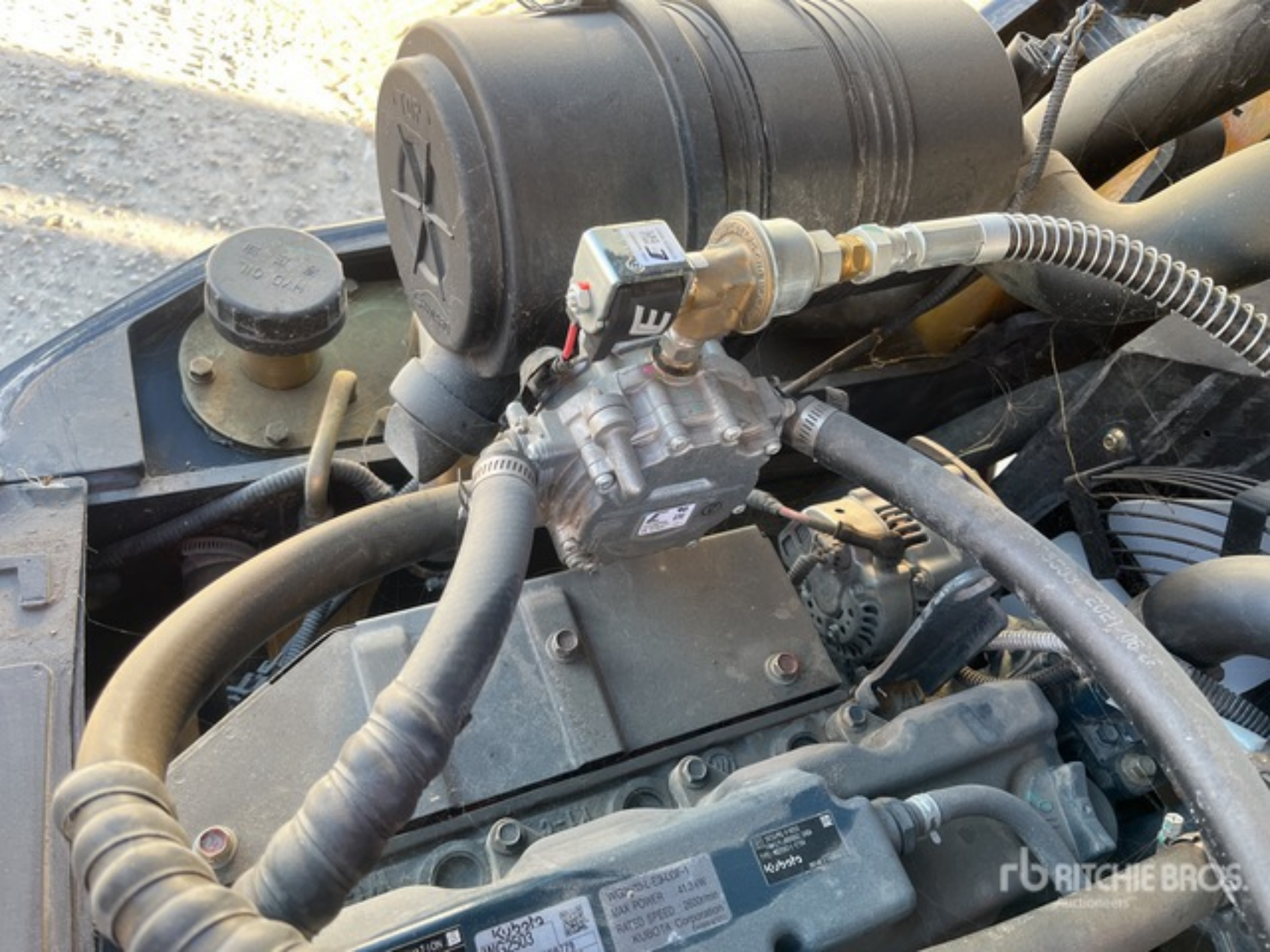
MADE IN JAPAN

WG2503-L-ET

MAX POWER 41.3kW

RATED SPEED 2600rpm

KUBOTA Corporation



HYD OIL

Kubota
WG2503
100-104-2840F-1
MAX POWER 41.3kW
RATED SPEED 2800rpm
KUBOTA Corporation

FB RITCHIE BROS.
CONSTRUCTION EQUIPMENT





LIFT HEIGHT "A"
CAPACITY

2023	kg
4450	lb
	kg
	lb

TRUCK MODEL
PRODUCT IDENTIFICATION NUMBER
TRUCK WEIGHT $\pm 3\%$
FRONT TREAD WIDTH
TIRE SIZE - FRONT
TIRE SIZE - REAR
MAST TYPE
ATTACHMENT

CLG20250-C
>CLG20250ZGMT14725K
3940 kg 8668 lb
891 mm 35.1 in
21x7x15
16x5x10
Roll Over Protection
Standard

OPTION
POWER 41.3KW
TIRE TYPE
BACK TILT

THIS INDUSTRIAL TRUCK CONFORMS TO ANSI/ISO B56.1

OPERATION OR MAINTENANCE MAY RESULT IN INJURY OR DEATH. REFER TO THE OPERATOR'S MANUAL FOR SAFETY INFORMATION.

LIUGONG

N | S | 99.7h



0.0mph

2023-11-22

Wed.

23 01

F1

F2

RTB RITCHIE BROS.

AUTOMATION



fb RITCHIE BROS.
Auctioneers



FB RITCHIE BROS.
Auctioneers





RTB RITCHIE BROS.
Auctioneers





FLORENCE BROS







RTICHEL BROS.



DANGER

Two pictograms illustrating forklift safety hazards: the top one shows a forklift with a load falling from the mast, and the bottom one shows a forklift with a load falling from the forks.

LIUGONG

Guangxi Liugong Machinery Co., Ltd.
No. 1 Likai Road, Luzhou, Guangxi 545007, P.R. China

RATED CAPACITY WITH MAST VERTICAL AT MAX. LIFT HEIGHT "A"

A	B	C	mm	in.	mm	in.	CAPACITY	kg
4200	600	A						
185	24							



THIS INDUSTRIAL TRUCK CONFORMS TO ANSI/ISO 861

WARNING: IMPROPER OPERATION CAN CAUSE PERSONAL INJURY OR DEATH

TRUCK MODEL
PRODUCT IDENTIFICATION NUMBER
TRUCK WEIGHT $\pm 3\%$
FRONT TREAD WIDTH
TIRE SIZE - FRONT
TIRE SIZE - REAR
MAST TYPE
ATTACHMENT

OPTION
POWER
TIRE TYPE
BACK TLT